



SOUTH FEATHER WATER & POWER

TO: Board of Directors

FROM: Kathy Petersen, Power Division Manager

DATE: January 18, 2006

RE: General Information (regarding matters not scheduled on agenda)
January 24, 2006 Board of Directors Meeting

Operations

Attached is the Storage and Generation Report for December 2005. Also attached is the chart of precipitation accumulated to date. With a monthly accumulation of 33.55 inches of rainfall, this was the third wettest December on record for the Forbestown gauge (behind 1996 and 1955). Storms have continued to move through the area fairly regularly, and we are finally getting some snow at Little Grass Valley and the upper elevations of the watershed. We are continuing to draft Little Grass Valley at a rate of 300 cfs in order to make some room for future runoff. The Slate Creek Diversion intake gates are closed and we are releasing all flows to the North Fork Yuba River since we do not currently need the Slate Creek inflow to Sly Creek Reservoir.

New Year's Eve Storm

The powerful storm that moved through California on December 30-31 brought 11 inches of rainfall within 48 hours. All of the reservoirs except Sly Creek and Miners Ranch spilled, with a peak of 7,762 cfs of spill at Ponderosa at noon on the 31st. Woodleaf and Forbestown powerhouses both tripped off-line with causes related to high flows and debris. Forbestown was returned to service January 1 and Woodleaf went back on line January 3. We also had a number of slides along the facility access roads, and several members of the crew worked the holiday weekend to reopen the roads and return the powerhouses to service.

Maintenance Projects

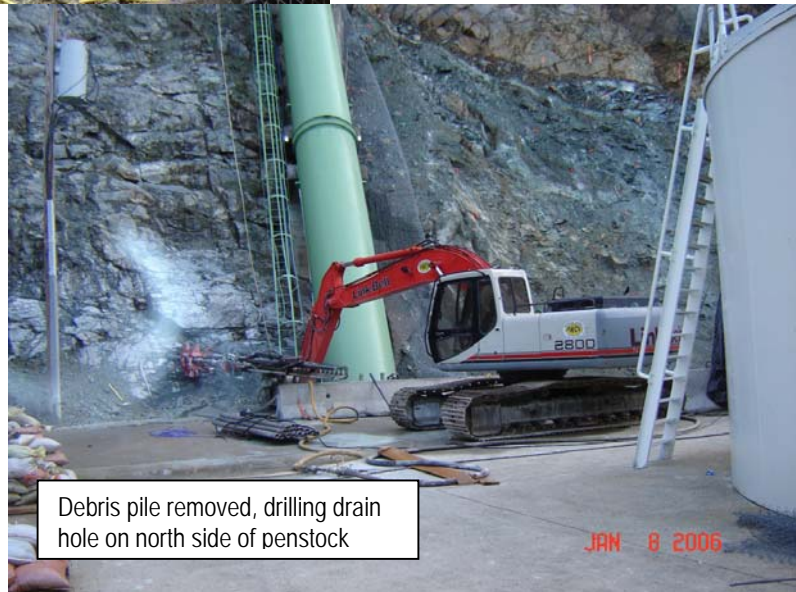
Much of the crews' time this past month has been spent dealing with weather-related repair projects and facility maintenance. Water Division crews have been assisting with reconstructing sections of road along the Miners Ranch Canal.

Outages

The crew is also preparing for the six-week outage that will be starting February 6. They will be pulling the wicket gates at Forbestown Powerhouse and sending them out for re-machining, and will be adjusting the shift ring that controls the turbine. They will also be completing the annual maintenance outages at Sly Creek and Woodleaf powerhouses at the same time. Two maintenance employees from Yuba County Water Agency will be assisting with the work at Forbestown Powerhouse.

Woodleaf Slope Improvement Project

Despite the wet weather, work has continued to progress quickly at Woodleaf Powerhouse. Director Jim Edwards again assisted when it came time to de-energize the 12 kV line that crosses the powerhouse yard, in anticipation of bringing in a crane from which the upper rock bolts will be installed. Scott Underhill provided the work-progress photos below.

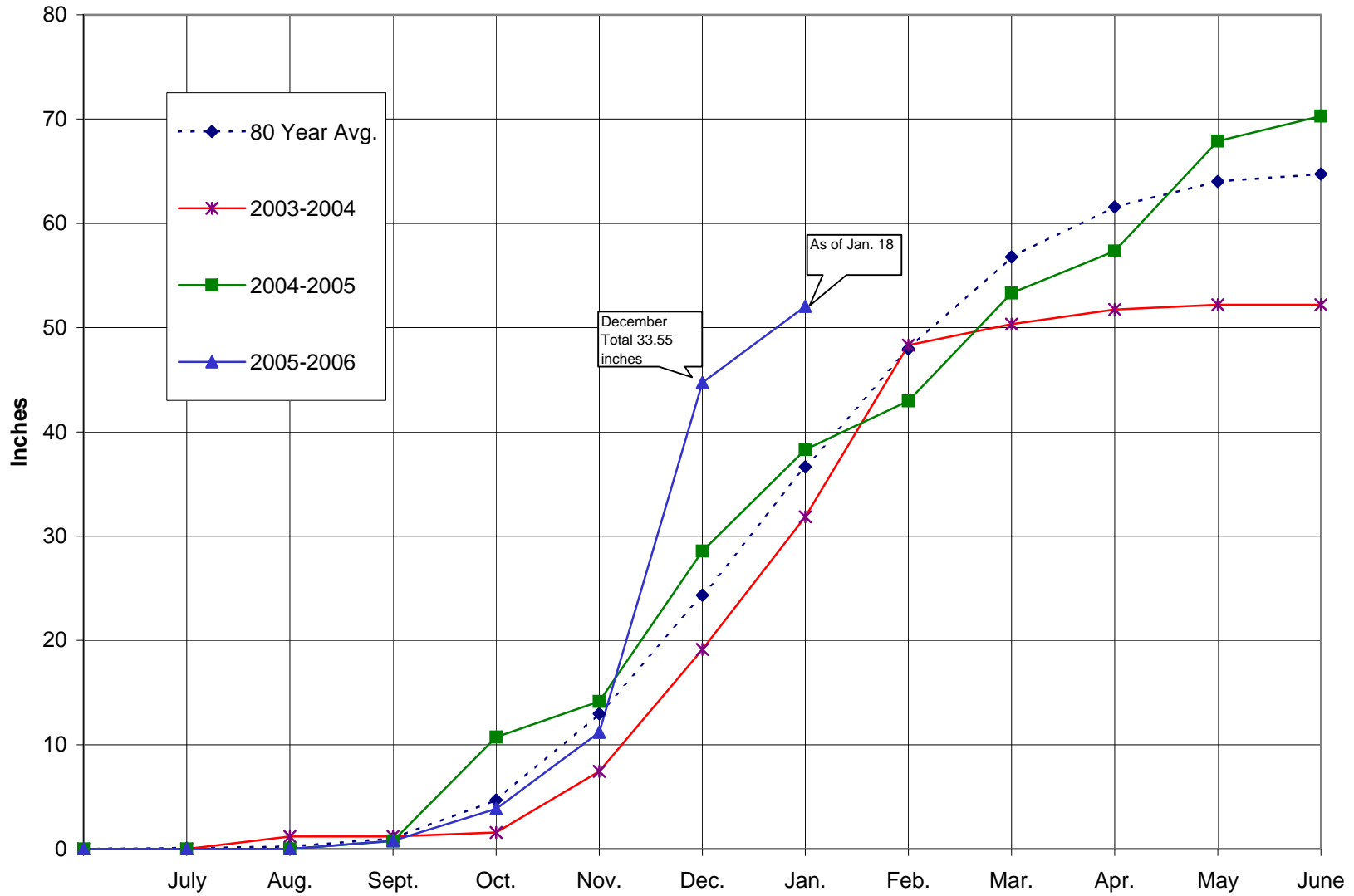


General Information

Sly Creek Campground Management

After reviewing the performance of our campground management service during the past couple of years, I recommended to Mr. Glaze that we seek competitive bids for management of the Sly Creek recreation facilities. I have identified four organizations (including Northwest Park Management) that provide campground management services in northern California, and will be preparing a request for bids that I plan to distribute within the next week. Once we have received and reviewed the bids, I will bring a recommendation for your consideration at the March Board meeting.

South Feather Power Project - Forbestown Precipitation



**SOUTH FEATHER WATER AND POWER
SOUTH FEATHER POWER PROJECT
December 2005**

STORAGE

RESERVOIR	MAXIMUM CAPACITY	STORAGE ON 12-31-05	STORAGE ON 12-31-04
Little Grass Valley	94,660 AF	74,726 AF	39,609 AF
Sly Creek	65,650 AF	38,273 AF	17,239 AF
Lost Creek	5,750 AF	5,107 AF	4,423 AF
Forbestown Diversion	358 AF	352 AF	346 AF
Ponderosa	4,750 AF	4,826 AF	4,200 AF
Miners Ranch	896 AF	745 AF	720 AF
TOTAL	172,064 AF	124,029 AF	66,537 AF
Reservoir spilling			
Slate Creek Tunnel	800 CFS	90 CFS	73 CFS
South Fork Tunnel	600 CFS	313 CFS	29 CFS
Miners Ranch Canal	303 CFS	240 CFS	270 CFS

MONTHLY NET GENERATION

	FOR December 2005	YEAR TO DATE ON 12-31-05	YEAR TO DATE ON 12-31-04
Woodleaf P.H.	32,763,620 KWH	253,645,100 KWH	290,552,670 KWH
Forbestown P.H.	22,574,710 KWH	175,558,700 KWH	175,951,740 KWH
Kelly Ridge P.H.	8,048,312 KWH	81,231,845 KWH	84,304,775 KWH
Sly Creek P.H.	2,045,000 KWH	36,206,200 KWH	33,063,700 KWH