



SOUTH FEATHER WATER & POWER AGENCY

TO: Board of Directors

FROM: Matt Colwell, Water Division Manager

DATE: June 27, 2006

RE: General Information (regarding matters not scheduled on agenda)

Distribution Operations

Water Division staff have been accomplishing water distribution system maintenance and betterment projects including new office construction, service installations, leak repairs, assisting Power Division, and irrigation and domestic distribution system betterments.

Under the supervision of Jim Coffelt, staff successfully upgraded the treatment-plant flow



controllers from the aged (25 year old) analog technology to a modern, more accurate and useful digital signal. Plant flow and chlorine is now set through the programmable-logic controller. These technical enhancements completed by our staff have continued to significantly improve operations and control of the water treatment process. The photo above shows the significant amount of wiring and controls that were removed.

Chris Crown utilized her GIS/GPS experience to assist DTA and PG&E on mapping power transmission in the Stanislaus River Watershed. The photo at left shows the Agency GPS receiver backpack unit. Chris spent a week's time on the

project.

Water Division staff expended considerable efforts on a section of the Forbestown Canal to reduce the amount of seepage potentially effecting a residence and outbuildings in the community of Forbestown. It is not certain the damage from excess drainage water was from our canal or local subsurface drainage. Staff and management considered it prudent to make the effort to eliminate seepage as a significant contributor to the problem. Approximately 300 feet of the canal was cleaned, shaped and covered with shotcrete. The photo at right shows the shotcrete process.



Water Treatment Operations

Water Plant Production:

The MRTTP production (system demand) for May was 93-percent of average for the recent 5-year period. The cumulative annual production is 84-percent of average for this date. Please reference the attached graph at the end of this report for historical perspective.

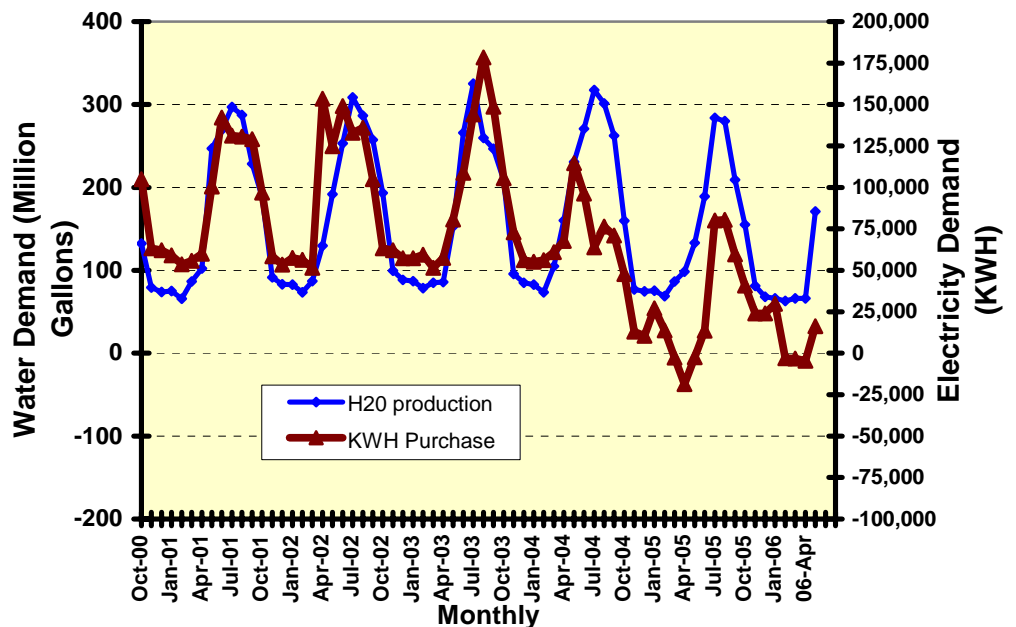
Bacteriological requirements were met for the Miners Ranch Treatment Plant, Bangor Treatment Plant, and Sly Creek campground.

Miners Ranch May 2006	
Total	177.2 Million Gallons
High	7.9 MGD
Low	3.3 MGD
Avg.	5.7 MGD
Bangor	
Total	0.56 Million Gallons
High	0.05 MGD
Low	0.00 MGD
Avg.	0.02 MGD

Solar Plant Production:

The graph at right provides a perspective of energy consumption compared to water production. May MRTTP energy consumption exceed solar energy production by 16,200 kwh.

**Miners Ranch Water Treatment Plant
Monthly Water Production VS: KWH Purchased**



M RTP Total Annual Water Production

