



SOUTH FEATHER WATER & POWER AGENCY

TO: Board of Directors

FROM: Kathy Petersen, Power Division Manager

DATE: September 18, 2006

RE: General Information (regarding matters not scheduled on agenda)
9/26/06 Board of Directors Meeting

Operations

Attached for your information is the Storage and Generation Report for August 2006. Also attached are charts showing the elevations of Little Grass Valley and Sly Creek reservoirs through the recreation season. We released 300 cfs from Little Grass Valley reservoir from August 24 through September 6, and then dropped the release to minimum for work upstream of South Fork Diversion until September 20. The flows will be ramped back up to 300 cfs after the 20th and will remain at that level through October, or until we reach the winter carry-over storage level.

Woodleaf Fire

A 25-acre forest fire began Sunday, September 10 on the south side of the South Fork Feather River near its confluence with Lost Creek (just upstream from Woodleaf Powerhouse), when an ultra-light aircraft crashed. Both occupants of the plane were killed. The Forest Service used helicopters to draw water from Sly Creek Reservoir to fight the fire, and dropped in hand crews to build fire breaks. There are no roads that go into that particular part of the forest. The fire was contained by late Wednesday, September 13.

Maintenance Projects

Little Grass Valley Recreation Area Repairs

When the annual Davis-Grunsky inspection was completed on August 23, we noted that the pathways at Little Grass Valley's Pancake Day-Use Area were in need of repairs, as the asphalt had broken and the ground surface was worn away. Joe Gibson and Gary Daley rebuilt the pathways using base rock in time for the Labor Day holiday. We will hold off paving these for now, as the entire area will be rehabilitated as part of our new license conditions to make the area more accessible for disabled visitors.

Joe and Gary also completed repairs to the Forest Service's water system for the Little Beaver campground area on September 15. The system had developed significant leaks in a couple of locations that caused their water storage tank to empty.

Annual Outages

The fall outage season is underway. The planned two-week annual outage on Woodleaf began September 11, but has to be extended an additional week due to additional welding repairs

on the runner and work on the penstock air vents. Kelly Ridge Powerhouse and Miners Ranch Conduit will be shut down on October 2. A Water Division crew will once again assist with the canal outage. You may recall that we completed annual maintenance at Sly Creek and Forbestown powerhouses last spring.



Sly Creek Disconnect Failure

On September 14, Nick Brandt noticed that the A-phase line side disconnect switch for the 115 kV circuit breaker was arcing. He shut down the powerhouse, which had been motoring (providing spinning reserve) and John Davis requested PG&E's maintenance department to inspect the switch, since this equipment is the link to their transmission line. Part of the contact portion in the receiving part of the disconnect has burned and separated from the rest of the metal, and will require replacement. At this time we don't know how long it will be until PG&E can find the replacement parts and make repairs. As long as Woodleaf is shutdown, Sly Creek would not normally be generating anyway. If Woodleaf is returned to service before repairs are completed, we may bypass water through Sly Creek to run the downstream powerhouses.

General Information

Ponderosa Way Asphalt Removal

We appreciated Jean Brown's insight into why the upper section of Ponderosa Way was paved. After years of maintaining this section of asphalt, it was pulverized and re-graded into a new smooth natural surface in less than eight hours by Western Stabilization. The photo shows the resulting road surface.



Whitewater Boating Picture in National

Circulation

One of the participants in the Lost Creek whitewater boating study last spring submitted a photo that was published in National Geographic Adventure magazine's September issue. While the large font caption discusses the thrill of finding a portion of the creek that was runnable, the smaller font notes that the crew did more portaging than paddling in the 11-hour trip.



YOUR TURN | THERE & BACK

“Every first descent is unpredictable, but seeing a dammed river surging like this was a real thrill—especially since it’s normally a trickle. We were conducting a flow study of northern California’s Lost Creek to see if it was navigable. This 25-foot waterfall led to a deep gorge that drops 740 feet over a mile. Discovering that this portion was runnable fired us up for the rest of the day.”

AQUA-FLIER

TAYLOR ROBERTSON, 27

Last April, kayaker Robertson and five teammates evaluated the recreational potential of Lost Creek, a tributary of the South Fork of the Feather River, for the conservation group American Whitewater (AW). High in the Sierra Nevada, the crew logged 11 hours—doing more portaging than paddling—to travel four miles. The Feather was a premier white-water destination before it was dammed more than 50 years ago. Since 1997 AW has been the river’s champion, restoring its rapids by way of dam releases.

This photo by teammate Darin McQuoid took first place in Round II of our Action Photography Contest. See other winning images at www.nationalgeographic.com/adventure.

PHOTOGRAPH BY DARIN MCQUOID

**SOUTH FEATHER WATER AND POWER
SOUTH FEATHER POWER PROJECT
August 2006**

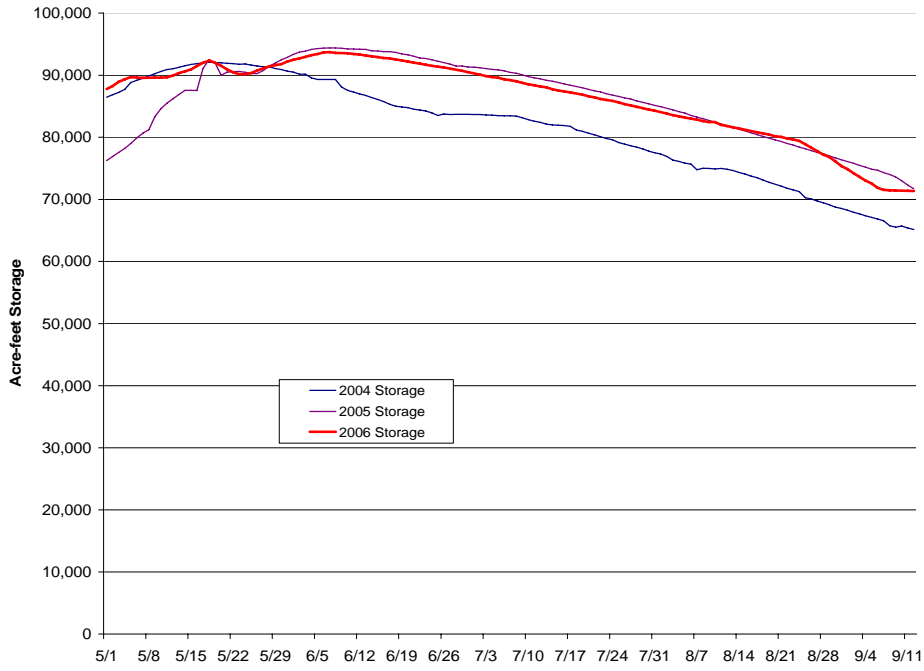
STORAGE

RESERVOIR	MAXIMUM CAPACITY	STORAGE ON 8-31-06	STORAGE ON 8-31-05
Little Grass Valley	94,660 AF	75,354 AF	76,375 AF
Sly Creek	65,650 AF	30,874 AF	36,267 AF
Lost Creek	5,750 AF	5,361 AF	5,500 AF
Forbestown Diversion	358 AF	316 AF	316 AF
Ponderosa	4,750 AF	4,522 AF	4,834 AF
Miners Ranch	896 AF	786 AF	752 AF
TOTAL	172,064 AF	117,213 AF	124,044 AF
Slate Creek Tunnel	800 CFS	N/A CFS	N/A CFS
South Fork Tunnel	600 CFS	273 CFS	136 CFS
Miners Ranch Canal	303 CFS	278 CFS	282 CFS

MONTHLY NET GENERATION

	FOR August 2006	YEAR TO DATE ON 8-31-06	YEAR TO DATE ON 8-31-05
Woodleaf P.H.	25,367,410 KWH	272,022,450 KWH	164,072,620 KWH
Forbestown P.H.	14,175,100 KWH	123,670,410 KWH	120,853,910 KWH
Kelly Ridge P.H.	7,568,778 KWH	61,657,073 KWH	59,394,246 KWH
Sly Creek P.H.	3,421,800 KWH	44,184,200 KWH	26,550,100 KWH
TOTAL	50,533,088 KWH	501,534,133 KWH	370,870,876 KWH

Little Grass Valley Storage



Sly Creek Storage

