



SOUTH FEATHER WATER & POWER AGENCY

TO: Board of Directors

FROM: Matt Colwell, Water Division Manager

DATE: November 28, 2006

RE: General Information (regarding matters not scheduled on agenda)
Distribution Operations

Water Division staff have been accomplishing water distribution system maintenance and betterment projects including new office construction, service installations, leak repairs, assisting Power Division and irrigation and domestic distribution system betterments.

Staff has been working to minimize the junk and garbage accumulation surrounding Lake Wyandotte. Unrestricted access from the



neighboring parcels has allowed an unsightly nuisance of garbage dumping to occur (picture above). The only reasonable solution was to work with the surrounding property owners to eliminate roadside access. The Agency gained approval from the property owners in Hawaii to construct and install three pipe gates and refurbished another along the Hurleton and Forbestown Road rights-of-way. Already there have been attempts at destroying the new gates.

Water Division crews have started placing the water pipe network for relocating Riverview (ID#1) booster pumping plant. The pumphouse will be 10'x 22' and house a series of three booster pumps and controls. The outside will be tan stucco with green steel roofing to consistently match the style of the new office. Staff are also replacing the old (non-existent) ID#2 pump control house roof with green steel to have a similar appearance as Riverview and the new office (below).



Water Treatment Operations

Water Plant Production:

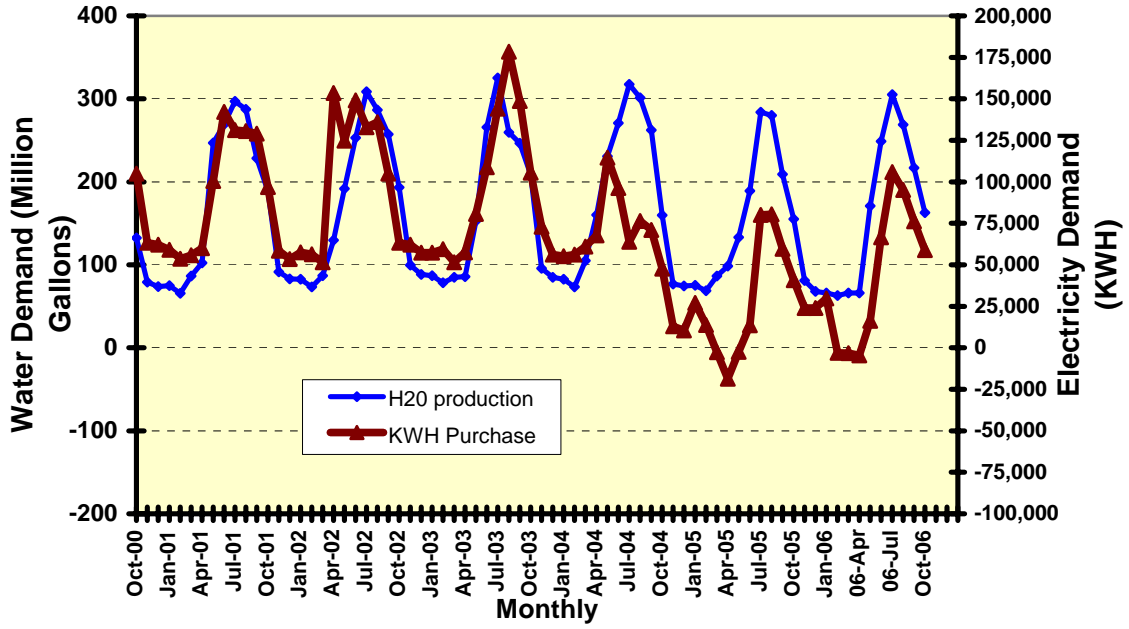
The treated water production at MRTP for October was near normal for the recent 5-year period. The cumulative annual production for this date is still below average at 97-percent. Please reference the attached graph at the end of this report for historical perspective.

Solar Plant Production

October MRTP energy consumption exceeded solar energy production by **58,800 kWh**. The graph below provides a perspective of energy consumption compared to water production.

Miners Ranch		October 2006	
Total		169.5 Million Gallons	
High		6.5 MGD	
Low		4.0 MGD	
Avg.		5.5 MGD	
Bangor			
Total		0.44 Million Gallons	
High		0.03 MGD	
Low		0.00 MGD	
Avg.		0.02 MGD	

Miners Ranch Water Treatment Plant Monthly Water Production VS: KWH Purchased



M RTP Total Annual Water Production

