



SOUTH FEATHER WATER & POWER AGENCY

TO: Board of Directors

FROM: Jennifer Slinkard, Finance Division Manager

DATE: February 21, 2007

RE: General Information (regarding matters not scheduled on the agenda)
2/27/07 Board of Directors Meeting

South Feather Relicensing Consulting Services

Devine, Tarbell and Associates, Inc. (DTA), consultant for the South Feather Power Project relicensing, submitted its Monthly Activity Report for the period of November 27 through December 31, 2006 in the amount of \$88,201.

2006 Audit

On February 6th and 7th, Justin Williams, Jason Russell, and Dustin Cassady, from Mann, Urrutia, Nelson CPAs & Associates, were on site to perform the preliminary audit work for 2006. They performed tests on cash receipts, cash disbursements, and payroll. They also interviewed various staff members and asked many questions to gain an understanding of how the Agency's business works. The year-end audit work is still scheduled to begin on March 20th and should take approximately one week.

Direct Debit for Water Payments

South Feather is now offering customers the option to pay their water bills through direct debit of their bank accounts. This means that the balance due on their monthly statement will be automatically withdrawn from their bank account on the due date for that statement. If a customer wants to make direct debit payments, they provide their bank account information and sign a form authorizing their payments be made automatically each month. This will continue until they choose to stop the service.

In order to accommodate this new service, many system changes were needed. The "Clearing House" module in Springbrook was set up, an upload process with Tri-Counties Bank was established and several new procedures were implemented. Initially, the customer's bank information must be added to their Utility Billing account. This is a one-time set up for each customer that must be done prior to using the service. After each billing, an additional process must be run in the Clearing House module in order to create the direct debit batch. This process creates an export file that is submitted to the bank in order

to process the automatic clearing house (ACH) transactions. The business day after this file is submitted to the bank, all customer accounts are debited for the transaction amounts and a deposit is automatically made into SFWPA's bank account for the total of all transactions processed.

This will create significant time savings for the Agency employee who processes payments. The amount of time that it takes to process each payment individually (typical process) definitely exceeds the amount of time it takes to process the direct-debit batches (new process). This also eliminates an employee having to taking these payments to the bank, and it also gets the money deposited into the Agency's bank account much sooner than if each payment had to be manually processed.

2007 SUMMARY FINANCIAL REPORT
South Feather Water and Power Agency - Water Division
As of January 31, 2007

O&M SUMMARY

Account Division	Description	Actual This Month	Year-to-Date			2007 ANNUAL BUDGET
			Actual	%	Remaining	
	O&M EXPENSES					
51000	WATER SOURCE	\$ -	\$ -	0.00%	\$ 13,200	\$ 13,200
52000	ENVIRON. HEALTH & SAFETY	\$ 1,984	\$ 1,984	4.64%	\$ 40,816	\$ 42,800
53000	WATER TREAT. PLANT	\$ 25,577	\$ 25,577	5.62%	\$ 429,723	\$ 455,300
54000	TRANS. & DIST. (T & D)	\$ 41,143	\$ 41,143	4.49%	\$ 874,257	\$ 915,400
55000	CUSTOMER ACCOUNT	\$ 16,444	\$ 16,444	5.53%	\$ 281,156	\$ 297,600
56000	GENERAL ADMIN. & PLANT	\$ 179,288	\$ 179,288	7.92%	\$ 2,083,612	\$ 2,262,900
57000	SUNDRY BILLINGS & EXP CR.	\$ (3,186)	\$ (3,186)	2.00%	\$ (155,914)	\$ (159,100)
58000	INFORMATION TECHNOLOGY	\$ 2,228	\$ 2,228	1.95%	\$ 111,872	\$ 114,100
59000	NON-OPERATING	\$ -			\$ -	
	TOTAL O&M EXPENSES	\$ 263,478	\$ 263,478	6.68%	\$ 3,678,722	\$ 3,942,200
	O&M REVENUE					
41000	WATER SALES	\$ 384,278	\$ 384,278	9.97%	\$ 3,471,422	\$ 3,855,700
42000	WATER SERVICE CHARGES	\$ 2,312	\$ 2,312	0.43%	\$ 540,688	\$ 543,000
49000	NON-OPERATING REVENUE	\$ 270,159	\$ 270,159	27.98%	\$ 695,241	\$ 965,400
	TOTAL O&M REVENUE	\$ 656,749	\$ 656,749	12.24%	\$ 4,707,351	\$ 5,364,100
	O&M BALANCE:	\$ 393,271	\$ 393,271	27.66%	\$ 1,028,629	\$ 1,421,900

DEBT SERVICE

Account Division	Description	Actual This Month	Year-to-Date			2007 ANNUAL BUDGET
			Actual	%	Remaining	
21413	EDA Loan Principal	\$ -	\$ -	0.00%	\$ 11,000	\$ 11,000
21414	MRTP Principal	\$ -	\$ -	0.00%	\$ 90,000	\$ 90,000
21415	'95 COP Principal	\$ -	\$ -	0.00%	\$ 605,000	\$ 605,000
21419	'03 COP Principal	\$ -	\$ -		\$ -	\$ -
59450	Interest, EDA Loan	\$ -	\$ -	0.00%	\$ 7,800	\$ 7,800
59570	Interest, MRTP Bonds	\$ -	\$ -	0.00%	\$ 88,300	\$ 88,300
59571	'95 COP Interest	\$ -	\$ -	0.00%	\$ 89,000	\$ 89,000
59572	'03 COP Interest	\$ -	\$ -	0.00%	\$ 140,100	\$ 140,100
	TOTAL DEBT SERVICE	\$ -	\$ -	0.00%	\$ 1,031,200	\$ 1,031,200

2007 SUMMARY FINANCIAL REPORT
South Feather Water and Power Agency - Water Division
As of January 31, 2007

CAPITAL OUTLAY SUMMARY

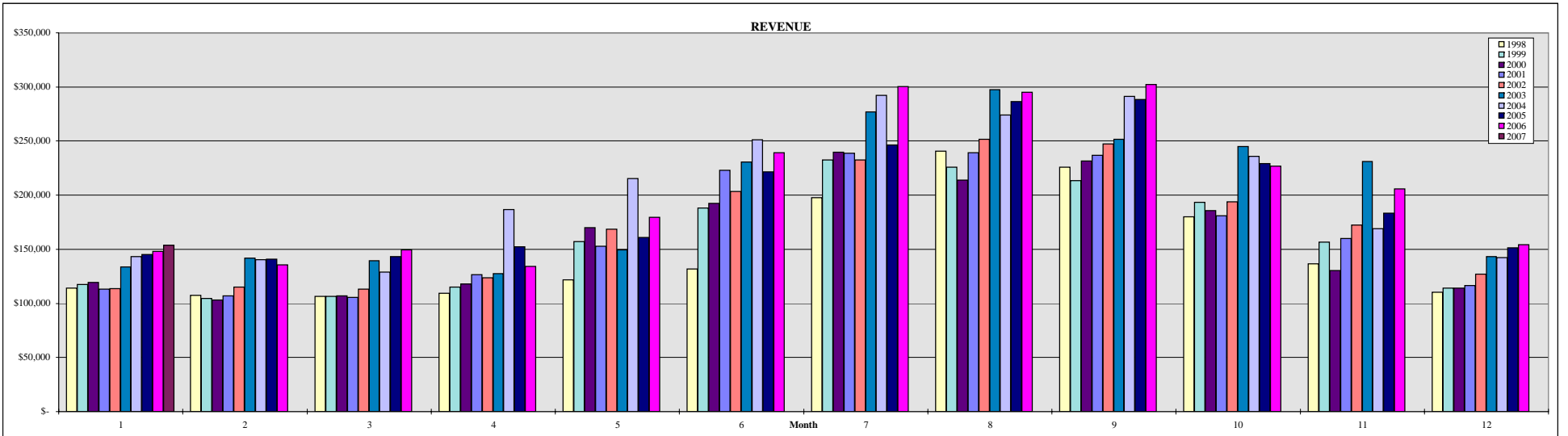
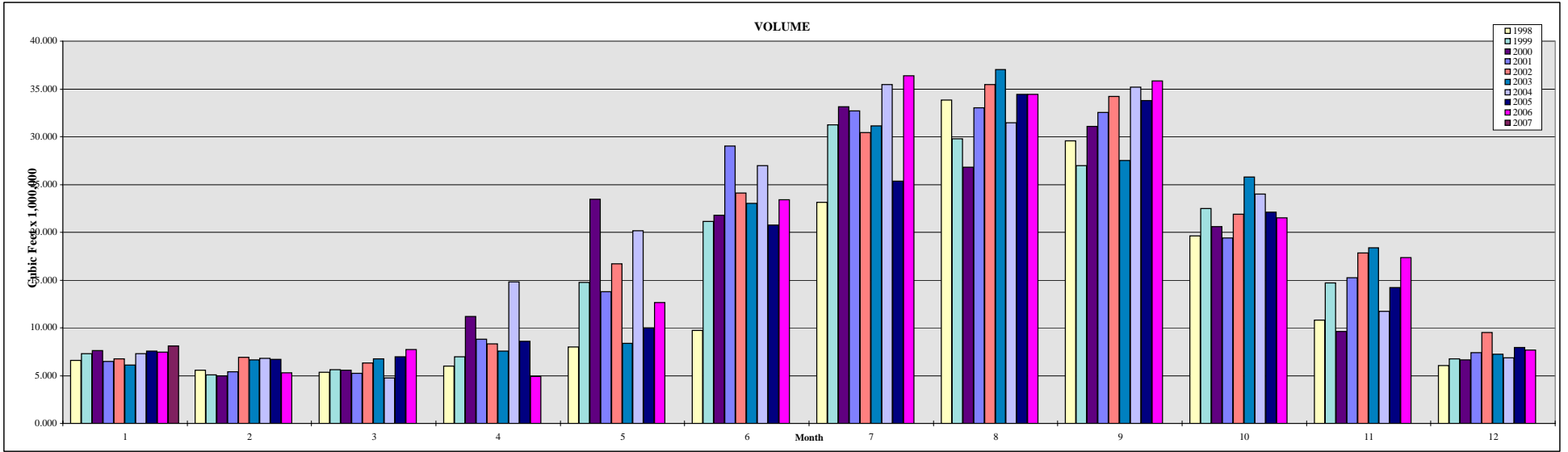
Account Division	Description	Actual	Year-to-Date			2007 ANNUAL
		This Month	Actual	%	Remaining	BUDGET
	CAPITAL OUTLAY EXPENSES					
	Betterments	\$ -	\$ -	0.00%	\$ 209,000	\$ 209,000
	Distribution System Projects	\$ 9,772	\$ 19,543	25.38%	\$ 57,457	\$ 77,000
	Irrigation System Projects	\$ -	\$ -	0.00%	\$ 164,500	\$ 164,500
	FERC Relicensing	\$ 1,474	\$ 1,474	0.57%	\$ 257,926	\$ 259,400
		\$ -	\$ -		\$ -	\$ -
		\$ -	\$ -		\$ -	\$ -
	O&M Contingency Fund	\$ -	\$ -		\$ -	\$ -
	TOTAL CAPITAL OUTLAY EXPENSES	\$ 11,245	\$ 21,017	2.96%	\$ 688,883	\$ 709,900
	RESERVES TRANSFERRED TO FUND CAPITAL OUTLAY					
	System Capacity Charge Fund	\$ -	\$ -		\$ 136,000	\$ 136,000
		\$ -	\$ -		\$ -	\$ -
	General Reserves for FERC	\$ -	\$ -	0.00%	\$ 183,200	\$ 183,200
	TOTAL RESERVES TRANSFERRED	\$ -	\$ -	0.00%	\$ 319,200	\$ 319,200
	CAPITAL OUTLAY BALANCE:	\$ (11,245)	\$ (21,017)	5.38%	\$ (369,683)	\$ (390,700)

	Balance	Year-to-Date		2007 ANNUAL
	This Month	Balance	Difference	BUDGET
TOTAL BALANCE:	\$ 382,026	\$ 372,254	\$ (372,254)	\$ -

RESERVE BALANCES	As of 12/31/2006	As of 1/31/2007	2007 Reserve Activity
General Fund	\$565,518	\$1,015,518	\$450,000
System Capacity Charges	\$1,079,147	\$1,079,147	\$0
South Fork Project FERC Relicensing Fund	\$0	\$0	\$0
Building Expansion	\$0	\$0	\$0
TOTAL	\$1,644,665	\$2,094,665	\$450,000

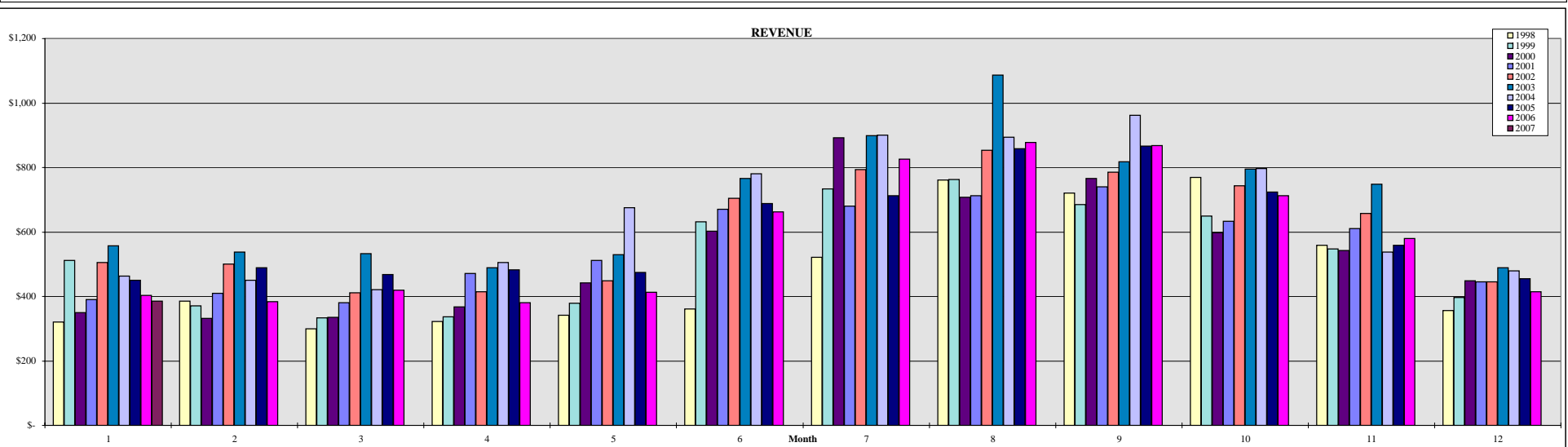
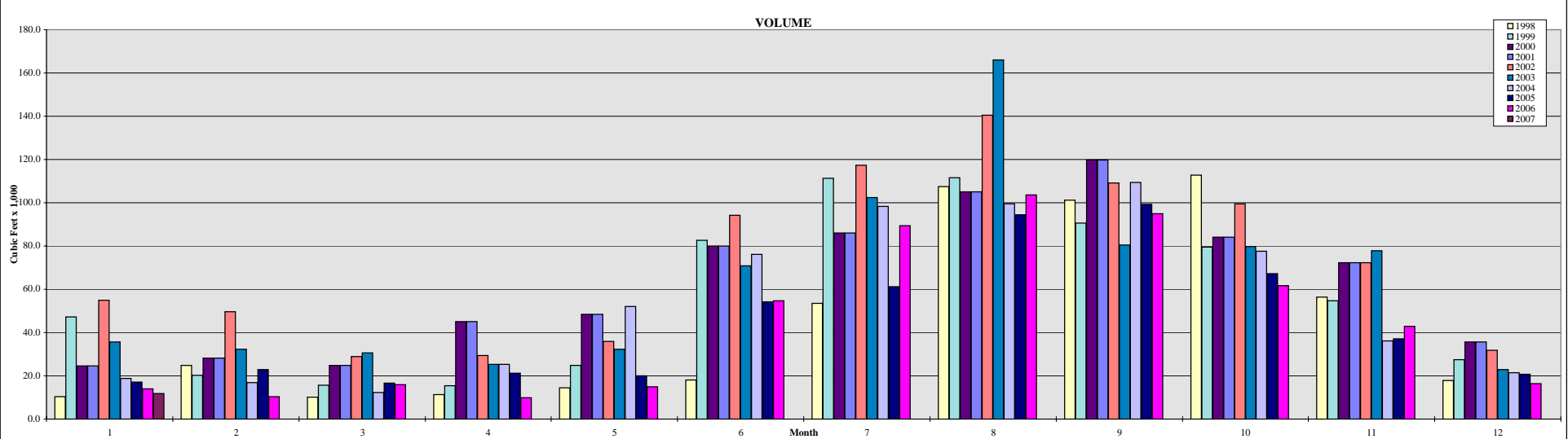
MINERS RANCH TREATMENT PLANT CONSUMPTION: 1998 - 2007

Month	Customers										Volume (x 1,000,000 cf)										Revenue									
	1998	1999	2000	2001	2002	2003	2004	2005	2006	2007	1998	1999	2000	2001	2002	2003	2004	2005	2006	2007	1998	1999	2000	2001	2002	2003	2004	2005	2006	2007
1	5,892	6,038	6,061	6,113	6,173	6,313	6,429	6,474	6,573	6,669	6,591	7,295	7,639	6,487	6,775	6,122	7,271	7,554	7,448	8,090	\$ 114,155	\$ 117,445	\$ 119,450	\$ 113,241	\$ 113,477	\$ 133,641	\$ 143,027	\$ 145,277	\$ 148,137	\$ 153,959
2	5,989	6,023	6,052	6,120	6,176	6,339	6,420	6,471	6,587		5,569	5,070	4,955	5,431	6,936	6,628	6,796	6,691	5,292		\$ 107,507	\$ 104,657	\$ 103,050	\$ 106,726	\$ 115,056	\$ 141,679	\$ 140,355	\$ 140,867	\$ 135,734	
3	5,996	6,018	6,099	6,112	6,185	6,352	6,418	6,491	6,599		5,364	5,643	5,566	5,228	6,334	6,774	4,730	6,973	7,711		\$ 106,584	\$ 106,598	\$ 107,018	\$ 105,612	\$ 113,010	\$ 139,244	\$ 128,788	\$ 143,055	\$ 149,585	
4	5,995	6,035	6,065	6,123	6,195	6,351	6,431	6,504	6,601		5,974	6,981	11,165	8,803	8,342	7,575	14,813	8,602	4,902		\$ 109,558	\$ 115,190	\$ 118,114	\$ 126,323	\$ 123,744	\$ 127,524	\$ 186,929	\$ 152,140	\$ 134,041	
5	6,001	6,050	6,080	6,122	6,193	6,350	6,425	6,521	6,617		7,992	14,773	23,474	13,808	16,710	8,391	20,148	9,999	12,634		\$ 121,684	\$ 156,999	\$ 169,787	\$ 152,637	\$ 168,473	\$ 149,448	\$ 215,567	\$ 161,093	\$ 179,334	
6	6,003	6,062	6,079	6,138	6,185	6,362	6,430	6,523	6,629		9,754	21,119	21,765	29,002	24,116	23,040	26,978	20,752	23,382		\$ 131,788	\$ 188,176	\$ 192,266	\$ 222,846	\$ 203,323	\$ 230,840	\$ 250,942	\$ 221,634	\$ 239,100	
7	6,019	6,067	6,090	6,146	6,212	6,372	6,447	6,523	6,622		23,137	31,259	33,114	32,707	30,445	31,117	35,443	25,326	36,390		\$ 197,732	\$ 232,307	\$ 239,881	\$ 238,548	\$ 232,671	\$ 277,024	\$ 292,074	\$ 246,343	\$ 300,406	
8	6,036	6,063	6,103	6,148	6,222	6,403	6,451	6,536	6,653		33,858	29,800	26,787	33,005	35,448	37,053	31,434	34,428	34,406		\$ 240,693	\$ 225,949	\$ 214,049	\$ 239,424	\$ 251,741	\$ 297,688	\$ 273,996	\$ 286,438	\$ 295,228	
9	6,042	6,059	6,114	6,152	6,251	6,396	6,463	6,536	6,652		29,575	26,951	31,057	32,518	34,240	27,494	35,193	33,775	35,822		\$ 225,969	\$ 213,264	\$ 231,555	\$ 236,950	\$ 247,204	\$ 251,588	\$ 291,115	\$ 288,492	\$ 302,033	
10	6,036	6,061	6,120	6,156	6,257	6,407	6,463	6,543	6,653		19,618	22,506	20,615	19,410	21,874	25,796	23,999	22,126	21,505		\$ 179,970	\$ 193,395	\$ 185,800	\$ 180,771	\$ 193,918	\$ 244,822	\$ 235,668	\$ 229,208	\$ 226,935	
11	6,041	6,060	6,125	6,162	6,244	6,406	6,460	6,558	6,664		10,814	14,678	9,599	15,217	17,848	18,403	11,714	14,193	17,340		\$ 136,419	\$ 156,601	\$ 130,495	\$ 160,144	\$ 172,334	\$ 230,893	\$ 169,262	\$ 183,401	\$ 205,562	
12	6,045	6,059	6,123	6,174	6,241	6,404	6,477	6,565	6,657		6,073	6,745	6,673	7,380	9,536	7,259	6,858	7,959	7,683		\$ 110,076	\$ 113,990	\$ 114,130	\$ 116,335	\$ 126,989	\$ 143,185	\$ 142,156	\$ 151,576	\$ 154,272	
Averages	6,008	6,050	6,093	6,139	6,211	6,371	6,443	6,520	6,626		164,318	192,823	202,410	208,996	218,603	205,651	225,376	198,380	214,517		\$ 1,782,134	\$ 1,924,573	\$ 1,925,595	\$ 1,999,557	\$ 2,061,941	\$ 2,367,575	\$ 2,469,879	\$ 2,349,523	\$ 2,470,368	
Totals																														



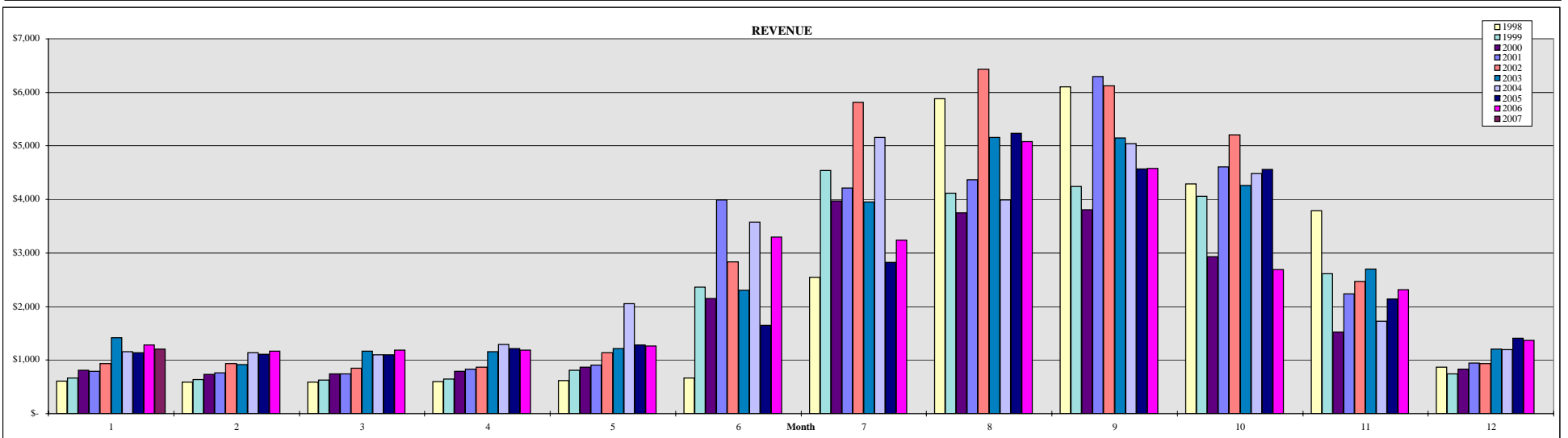
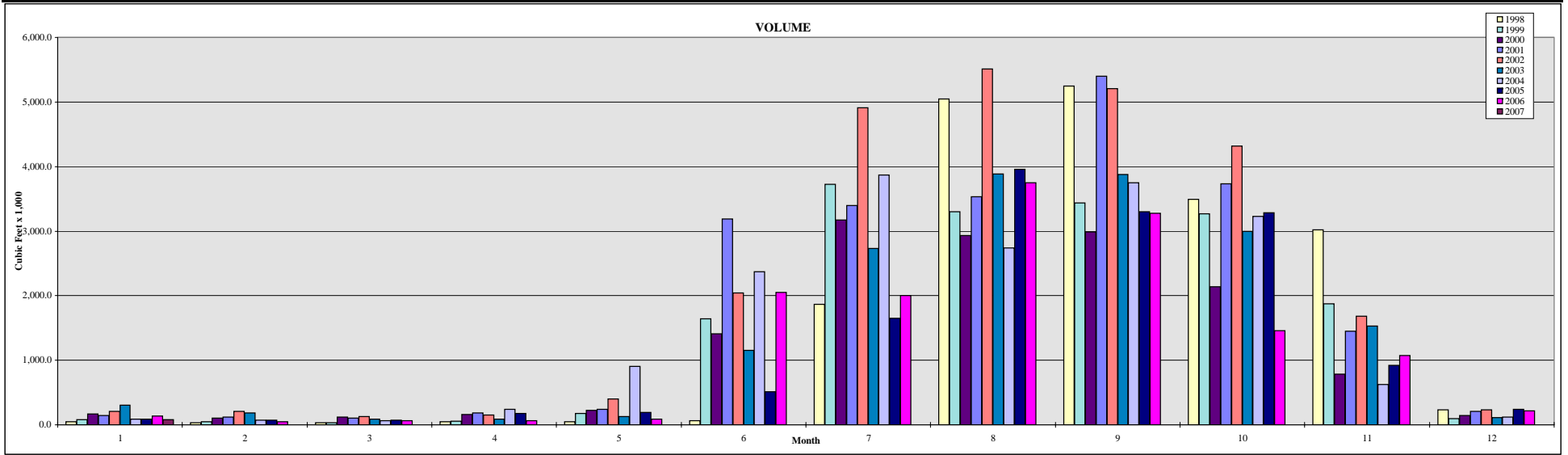
BANGOR TREATMENT PLANT CONSUMPTION: 1998 - 2007

Month	Customers										Volume (x 1,000 cfd)										Revenue									
	1998	1999	2000	2001	2002	2003	2004	2005	2006	2007	1998	1999	2000	2001	2002	2003	2004	2005	2006	2007	1998	1999	2000	2001	2002	2003	2004	2005	2006	2007
1	20	19	18	18	19	22	22	22	24	23	10.4	47.3	24.6	24.6	55.0	35.7	18.9	17.0	13.9	11.8	\$ 321	\$ 511	\$ 350	\$ 390	\$ 505	\$ 558	\$ 463	\$ 451	\$ 404	\$ 386
2	20	19	18	18	19	22	22	22	23		24.9	20.3	28.3	28.3	49.7	32.3	16.9	23.0	10.4		\$ 385	\$ 371	\$ 333	\$ 410	\$ 501	\$ 538	\$ 450	\$ 489	\$ 384	
3	20	18	18	18	19	23	22	24	23		10.1	15.7	24.7	24.7	29.0	30.7	12.3	16.6	16.0		\$ 300	\$ 334	\$ 336	\$ 380	\$ 412	\$ 533	\$ 421	\$ 468	\$ 419	
4	19	19	17	18	19	23	22	23	23		11.4	15.5	45.0	45.0	29.5	25.3	25.4	21.2	9.9		\$ 322	\$ 336	\$ 368	\$ 472	\$ 415	\$ 489	\$ 505	\$ 483	\$ 380	
5	19	19	17	18	19	22	22	23	23		14.4	24.9	48.4	48.4	35.8	32.4	52.0	19.9	15.0		\$ 342	\$ 380	\$ 442	\$ 512	\$ 448	\$ 530	\$ 675	\$ 474	\$ 413	
6	19	19	18	18	19	21	22	23	24		18.0	82.6	80.1	80.1	94.2	70.9	76.2	54.3	54.6		\$ 361	\$ 632	\$ 602	\$ 670	\$ 704	\$ 766	\$ 901	\$ 688	\$ 662	
7	20	19	18	18	19	21	22	24	22		53.5	111.4	86.1	86.1	117.3	102.3	98.4	61.3	89.3		\$ 521	\$ 734	\$ 892	\$ 680	\$ 794	\$ 899	\$ 900	\$ 712	\$ 827	
8	20	18	18	18	19	21	22	24	23		107.5	111.6	105.1	105.1	140.5	166.1	99.4	94.5	103.7		\$ 761	\$ 763	\$ 707	\$ 713	\$ 854	\$ 1,086	\$ 895	\$ 858	\$ 878	
9	19	18	18	18	21	21	22	23	23		101.2	90.7	119.8	119.8	109.1	80.6	109.3	99.2	95.0		\$ 721	\$ 685	\$ 767	\$ 740	\$ 785	\$ 818	\$ 962	\$ 867	\$ 868	
10	20	18	18	18	20	22	22	23	24		112.8	79.5	84.1	84.1	99.4	79.7	77.6	67.2	61.8		\$ 769	\$ 649	\$ 598	\$ 633	\$ 743	\$ 795	\$ 797	\$ 723	\$ 712	
11	19	18	18	19	22	22	22	23	23		56.4	54.8	72.4	72.4	72.2	77.9	36.2	37.0	42.8		\$ 559	\$ 547	\$ 542	\$ 610	\$ 657	\$ 749	\$ 538	\$ 559	\$ 580	
12	19	18	18	19	21	22	22	23	23		17.8	27.4	35.7	35.7	31.8	22.9	21.5	20.7	16.3		\$ 356	\$ 397	\$ 449	\$ 446	\$ 445	\$ 489	\$ 480	\$ 456	\$ 415	
	20	19	18	18	20	22	22	23	23		538.4	681.7	754.3	754.3	863.5	756.8	644.1	531.9	528.8		\$ 5,719	\$ 6,340	\$ 6,385	\$ 6,655	\$ 7,261	\$ 8,249	\$ 7,866	\$ 7,229	\$ 6,941	
	Averages										Totals										Totals									



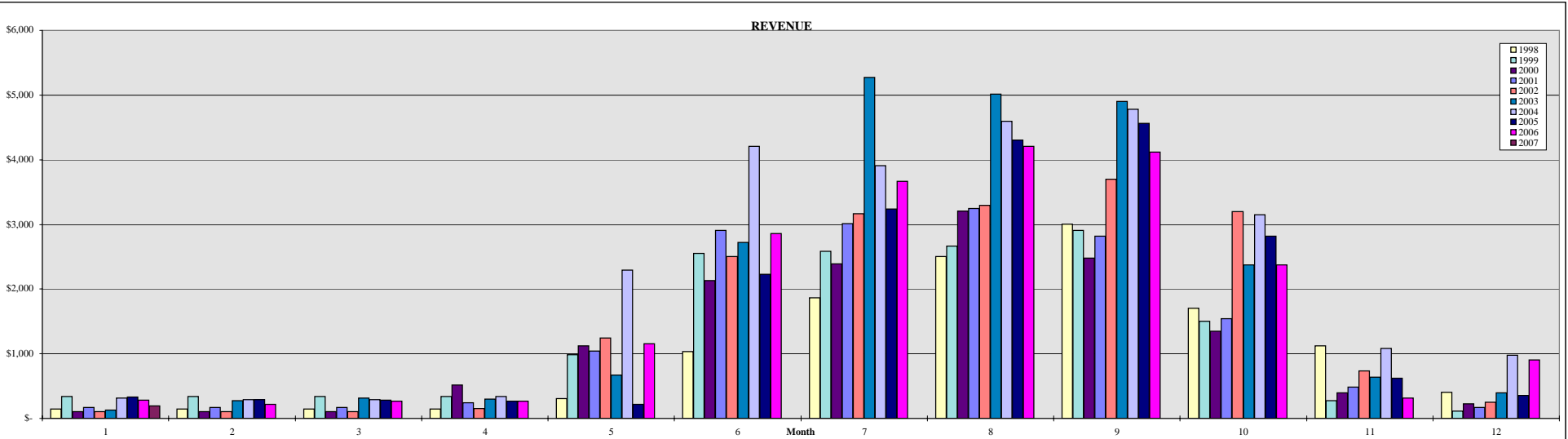
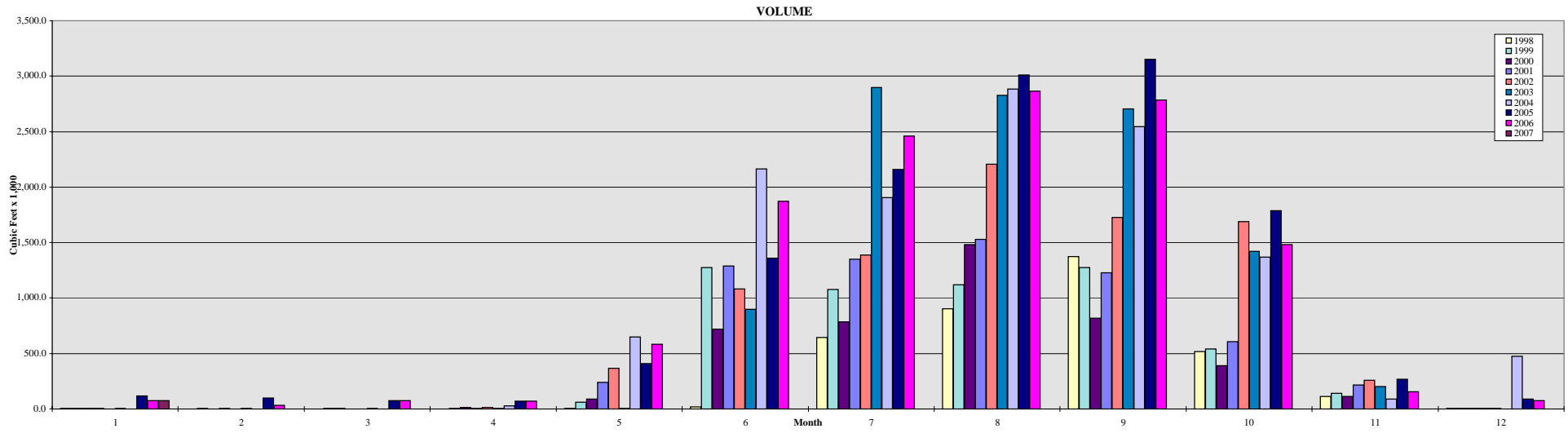
COMMUNITY LINE WATER CONSUMPTION: 1998 - 2007

Month	Customers										Volume (x 1,000 cfd)										Revenue									
	1998	1999	2000	2001	2002	2003	2004	2005	2006	2007	1998	1999	2000	2001	2002	2003	2004	2005	2006	2007	1998	1999	2000	2001	2002	2003	2004	2005	2006	2007
1	51	53	58	59	65	63	61	60	65	65	46.5	80.4	165.7	141.7	211.6	305.8	84.9	89.8	136.5	80.9	\$ 609	\$ 668	\$ 809	\$ 794	\$ 933	\$ 1,417	\$ 1,155	\$ 1,142	\$ 1,278	\$ 1,207
2	51	54	57	58	65	59	61	59	64		29.9	49.5	101.9	119.0	209.2	183.8	70.9	74.9	47.5		\$ 592	\$ 641	\$ 732	\$ 761	\$ 930	\$ 913	\$ 1,141	\$ 1,110	\$ 1,165	
3	50	54	57	58	65	62	59	59	64		34.2	29.0	116.4	105.4	125.7	89.9	65.3	68.3	67.8		\$ 585	\$ 624	\$ 747	\$ 747	\$ 844	\$ 1,166	\$ 1,100	\$ 1,103	\$ 1,190	
4	50	54	58	58	65	61	60	59	64		44.7	54.6	158.0	186.3	150.0	85.9	238.9	179.2	67.6		\$ 596	\$ 650	\$ 793	\$ 830	\$ 868	\$ 1,154	\$ 1,296	\$ 1,217	\$ 1,190	
5	52	57	58	63	66	62	64	62	67		44.6	177.5	227.0	236.7	399.7	125.1	908.6	189.2	86.9		\$ 616	\$ 810	\$ 872	\$ 830	\$ 911	\$ 1,138	\$ 2,056	\$ 1,280	\$ 1,262	
6	53	61	63	65	67	64	65	64	68		67.6	1,644.0	1,410.4	3,185.5	2,045.4	1,151.2	2,372.5	515.6	2,049.0		\$ 663	\$ 2,364	\$ 2,152	\$ 3,990	\$ 2,836	\$ 2,306	\$ 3,581	\$ 1,651	\$ 3,300	
7	59	64	66	65	69	65	67	64	67		1,867.8	3,726.3	3,171.5	3,395.3	4,911.0	2,729.9	3,873.0	1,652.2	2,004.9		\$ 2,550	\$ 4,542	\$ 3,972	\$ 4,212	\$ 5,815	\$ 3,949	\$ 5,162	\$ 2,822	\$ 3,238	
8	62	65	66	66	69	66	67	67	70		5,044.3	3,302.3	2,934.2	3,534.6	5,507.4	3,884.0	2,738.5	3,957.9	3,750.7		\$ 5,878	\$ 4,116	\$ 3,748	\$ 4,367	\$ 6,432	\$ 5,156	\$ 3,993	\$ 5,239	\$ 5,080	
9	63	64	66	67	69	66	67	67	69		5,248.8	3,438.5	2,991.5	5,401.0	5,209.8	3,874.6	3,752.9	3,300.4	3,273.6		\$ 6,099	\$ 4,246	\$ 3,807	\$ 6,300	\$ 6,125	\$ 5,146	\$ 5,038	\$ 4,572	\$ 4,579	
10	63	63	66	69	69	67	66	68	68		3,491.6	3,266.2	2,141.8	3,729.5	4,317.6	2,996.6	3,229.3	3,283.3	1,456.6		\$ 4,289	\$ 4,057	\$ 2,932	\$ 4,606	\$ 5,206	\$ 4,259	\$ 4,479	\$ 4,561	\$ 2,690	
11	63	62	65	68	67	64	62	68	69		3,020.6	1,876.5	788.1	1,448.6	1,680.5	1,531.5	625.5	923.8	1,077.1		\$ 3,791	\$ 2,615	\$ 1,526	\$ 2,236	\$ 2,468	\$ 2,697	\$ 1,729	\$ 2,142	\$ 2,317	
12	57	58	62	66	63	62	61	66	66		233.7	96.8	141.6	210.8	236.1	113.2	122.1	240.7	215.3		\$ 868	\$ 738	\$ 828	\$ 943	\$ 936	\$ 1,202	\$ 1,193	\$ 1,403	\$ 1,368	
Averages	56	59	62	64	67	63	63	64	67		19,174.3	17,741.6	14,348.1	21,694.4	25,004.0	17,071.5	18,082.4	14,475.3	14,233.5	80.9	\$ 27,136	\$ 26,072	\$ 22,918	\$ 30,695	\$ 34,532	\$ 30,579	\$ 31,923	\$ 28,657	\$ 28,657	
	Averages										Totals										Totals									



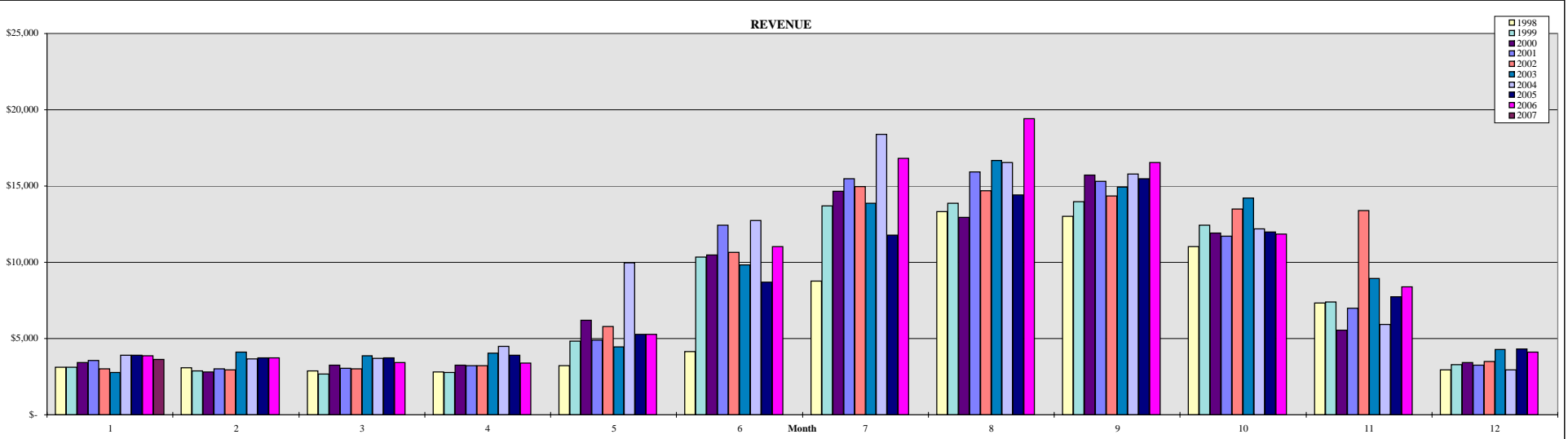
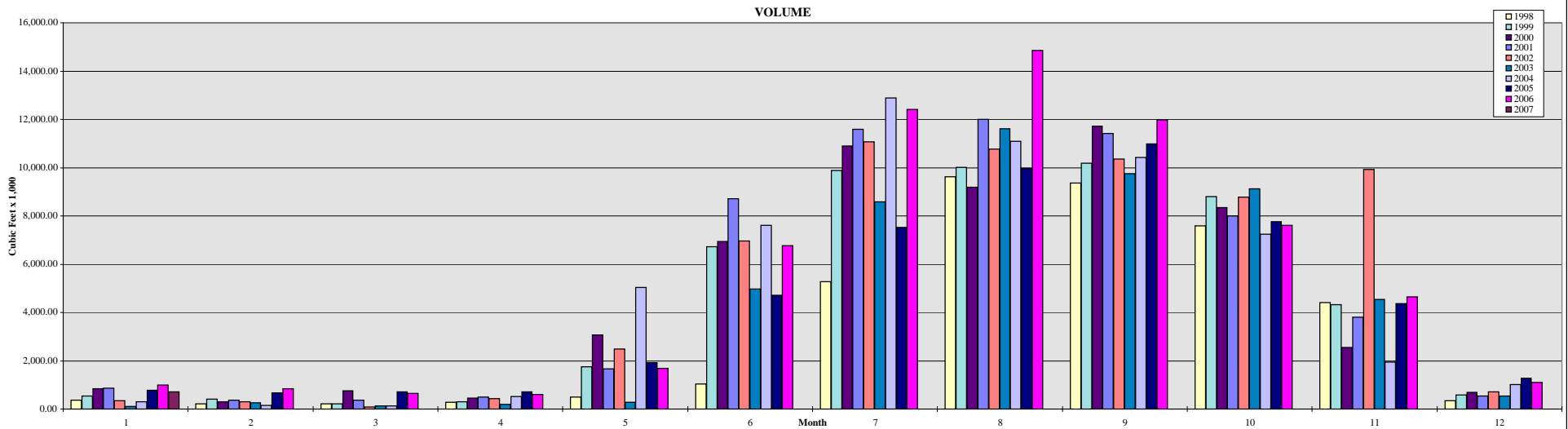
FORBESTOWN DITCH WATER CONSUMPTION: 1998 - 2007

Month	Customers										Volume (x 1,000 cf)										Revenue									
	1998	1999	2000	2001	2002	2003	2004	2005	2006	2007	1998	1999	2000	2001	2002	2003	2004	2005	2006	2007	1998	1999	2000	2001	2002	2003	2004	2005	2006	2007
1	5	10	5	7	5	7	10	14	11	6	2.4	3.3	4.5	2.4	1.7	4.3	1.7	115.5	74.2	73.7	\$ 147	\$ 338	\$ 105	\$ 169	\$ 102	\$ 127	\$ 312	\$ 335	\$ 284	\$ 196
2	5	10	5	5	5	8	9	12	10		1.7	2.7	2.3	2.4	1.7	3.1	0.8	99.2	34.5		\$ 147	\$ 338	\$ 102	\$ 168	\$ 102	\$ 278	\$ 293	\$ 290	\$ 222	
3	5	10	5	7	5	9	9	11	10		1.6	2.4	2.8	1.9	2.1	2.7	0.4	74.8	74.3		\$ 147	\$ 337	\$ 103	\$ 169	\$ 102	\$ 313	\$ 293	\$ 280	\$ 267	
4	5	10	13	9	7	9	10	10	10		2.3	2.9	15.1	4.3	14.6	2.5	26.8	72.8	71.4		\$ 147	\$ 338	\$ 513	\$ 244	\$ 151	\$ 295	\$ 338	\$ 268	\$ 266	
5	9	24	24	24	27	15	37	23	26		6.8	62.0	87.3	240.6	368.8	5.5	650.7	409.5	583.1		\$ 305	\$ 983	\$ 1,119	\$ 1,040	\$ 1,241	\$ 673	\$ 2,292	\$ 222	\$ 1,157	
6	26	38	36	45	39	38	48	36	42		16.8	1,273.3	721.3	1,291.0	1,083.5	896.5	2,164.7	1,359.0	1,873.7		\$ 1,030	\$ 2,551	\$ 2,135	\$ 2,909	\$ 2,503	\$ 2,724	\$ 4,210	\$ 2,229	\$ 2,862	
7	37	43	46	47	50	50	51	47	49		644.3	1,079.0	784.7	1,350.7	1,387.3	2,898.2	1,907.3	2,157.2	2,459.6		\$ 1,863	\$ 2,584	\$ 2,387	\$ 3,012	\$ 3,162	\$ 5,276	\$ 3,907	\$ 3,241	\$ 3,667	
8	44	43	52	48	46	47	54	53	53		905.5	1,120.9	1,483.7	1,530.4	2,207.7	2,829.6	2,885.7	3,009.0	2,863.3		\$ 2,504	\$ 2,666	\$ 3,205	\$ 3,243	\$ 3,299	\$ 5,013	\$ 4,597	\$ 4,301	\$ 4,205	
9	49	50	46	46	53	48	56	54	52		1,374.6	1,274.2	817.6	1,226.4	1,726.4	2,705.8	2,544.3	3,150.0	2,784.4		\$ 3,007	\$ 2,909	\$ 2,478	\$ 2,820	\$ 3,700	\$ 4,900	\$ 4,780	\$ 4,564	\$ 4,116	
10	38	32	38	42	41	29	44	43	44		517.3	539.1	392.3	606.2	1,688.6	1,419.9	1,370.4	1,785.5	1,480.9		\$ 1,708	\$ 1,505	\$ 1,352	\$ 1,543	\$ 3,202	\$ 2,374	\$ 3,147	\$ 2,817	\$ 2,373	
11	25	8	13	12	18	14	11	18	7		112.0	140.6	113.8	214.1	259.7	203.3	90.6	270.1	154.4		\$ 1,120	\$ 278	\$ 395	\$ 488	\$ 737	\$ 634	\$ 1,081	\$ 620	\$ 317	
12	12	6	5	5	10	12	22	14	8		2.4	4.4	6.5	4.4	3.7	2.1	474.9	89.5	74.6		\$ 404	\$ 116	\$ 230	\$ 170	\$ 249	\$ 392	\$ 973	\$ 353	\$ 904	
Averages	34	38	40	42	43	38	30	28	44		3,587.7	5,504.8	4,431.9	6,474.8	8,745.8	10,973.5	12,118.3	12,592.1	12,528.4		\$ 12,527	\$ 14,942	\$ 14,125	\$ 15,974	\$ 18,548	\$ 23,001	\$ 26,221	\$ 19,520	\$ 20,641	
											Totals										Totals									



BANGOR DITCH WATER CONSUMPTION: 1998 - 2007

Month	Customers										Volume (x 1,000 ccf)										Revenue									
	1998	1999	2000	2001	2002	2003	2004	2005	2006	2007	1998	1999	2000	2001	2002	2003	2004	2005	2006	2007	1998	1999	2000	2001	2002	2003	2004	2005	2006	2007
1	142	150	156	166	169	153	166	183	157	160	377.22	537.94	837.44	859.72	346.08	117.70	298.02	783.28	999.46	724.20	\$ 3,122	\$ 3,105	\$ 3,435	\$ 3,568	\$ 3,026	\$ 2,781	\$ 3,888	\$ 3,896	\$ 3,866	\$ 3,620
2	143	147	153	143	168	171	164	163	155		213.70	400.80	303.18	361.76	293.68	266.06	154.00	663.21	844.31		\$ 3,089	\$ 2,887	\$ 2,803	\$ 3,020	\$ 2,961	\$ 4,122	\$ 3,650	\$ 3,729	\$ 3,730	
3	141	143	153	163	168	169	164	163	153		220.94	211.76	754.78	372.62	97.02	133.18	132.34	720.10	643.28		\$ 2,883	\$ 2,658	\$ 3,264	\$ 3,033	\$ 3,018	\$ 3,860	\$ 3,682	\$ 3,741	\$ 3,441	
4	139	146	160	165	174	168	178	170	152		272.62	292.12	461.80	487.16	431.74	187.56	522.04	708.38	605.38		\$ 2,797	\$ 2,778	\$ 3,285	\$ 3,206	\$ 3,219	\$ 4,034	\$ 4,479	\$ 3,904	\$ 3,400	
5	147	173	179	191	204	184	212	187	192		502.84	1,747.80	3,072.74	1,674.56	2,480.72	288.72	5,044.56	1,915.86	1,689.26		\$ 3,230	\$ 4,845	\$ 6,184	\$ 4,883	\$ 5,786	\$ 4,464	\$ 9,950	\$ 5,274	\$ 5,263	
6	167	196	200	211	216	212	219	212	217		1,045.74	6,716.56	6,947.80	8,703.04	6,959.76	4,964.58	7,615.46	4,708.74	6,759.58		\$ 4,148	\$ 10,360	\$ 10,482	\$ 12,439	\$ 10,641	\$ 9,842	\$ 12,741	\$ 8,689	\$ 11,012	
7	188	203	210	216	223	220	241	219	218		5,275.60	9,879.98	10,891.28	11,582.04	11,067.80	8,588.32	12,886.23	7,522.74	12,410.45		\$ 8,769	\$ 13,703	\$ 14,675	\$ 15,467	\$ 14,963	\$ 13,871	\$ 18,402	\$ 11,780	\$ 16,807	
8	200	207	213	219	227	220	229	226	222		9,612.98	10,020.84	9,182.30	11,999.64	10,774.98	11,602.54	11,088.18	9,961.04	14,843.95		\$ 13,326	\$ 13,876	\$ 12,941	\$ 15,918	\$ 14,707	\$ 16,675	\$ 16,533	\$ 14,425	\$ 19,431	
9	197	204	221	220	226	221	226	223	225		9,359.26	10,184.08	11,723.20	11,423.02	10,348.92	9,755.90	10,421.12	10,981.46	11,988.86		\$ 13,000	\$ 13,983	\$ 15,704	\$ 15,307	\$ 14,357	\$ 14,926	\$ 15,787	\$ 15,496	\$ 16,535	
10	188	197	202	215	219	216	216	221	218		7,590.02	8,797.80	8,352.52	7,999.32	8,768.44	9,115.18	7,235.44	7,757.52	7,617.21		\$ 11,036	\$ 12,428	\$ 11,923	\$ 11,707	\$ 13,508	\$ 14,196	\$ 12,207	\$ 11,990	\$ 11,845	
11	170	181	182	195	199	196	182	185	196		4,401.70	4,334.72	2,553.02	3,808.04	9,929.70	4,545.10	1,943.22	4,363.88	4,658.00		\$ 7,320	\$ 7,401	\$ 5,548	\$ 6,995	\$ 13,400	\$ 8,930	\$ 5,912	\$ 7,743	\$ 8,379	
12	152	159	171	173	178	172	176	165	174		355.28	587.18	690.56	537.32	718.90	548.50	1,022.73	1,286.40	1,106.82		\$ 2,939	\$ 3,283	\$ 3,438	\$ 3,261	\$ 3,510	\$ 4,298	\$ 2,930	\$ 4,314	\$ 4,119	
Averages	165	176	183	190	198	192	198	190	190		39,227.90	53,711.58	55,770.62	59,808.24	62,217.74	50,113.34	58,363.33	51,372.61	64,166.58		\$ 75,659	\$ 91,306	\$ 93,662	\$ 98,806	\$ 103,095	\$ 102,000	\$ 110,160	\$ 94,980	\$ 107,827	
	Averages										Totals										Totals									



PALERMO DITCH WATER CONSUMPTION: 1998 - 2007

Month	Customers											Volume (x 1,000 cfd)											Revenue										
	1998	1999	2000	2001	2002	2003	2004	2005	2006	2007	1998	1999	2000	2001	2002	2003	2004	2005	2006	2007	1998	1999	2000	2001	2002	2003	2004	2005	2006	2007			
1	64	70	70	70	78	56	75	71	71	77	180.56	214.12	236.90	189.36	220.22	84.60	219.66	342.90	491.02	636.15	\$ 1,476	\$ 1,487	\$ 1,465	\$ 1,380	\$ 1,491	\$ 1,067	\$ 1,945	\$ 1,548	\$ 1,811	\$ 2,124			
2	60	67	67	70	76	73	72	68	69		186.24	126.06	97.27	187.48	230.52	148.02	208.66	519.50	426.59		\$ 1,393	\$ 1,363	\$ 1,384	\$ 1,370	\$ 1,435	\$ 1,746	\$ 1,881	\$ 1,828	\$ 1,728				
3	63	61	67	68	76	74	72	68	70		165.84	559.58	75.67	180.76	197.06	206.80	169.64	546.35	420.94		\$ 1,405	\$ 1,518	\$ 1,330	\$ 1,296	\$ 1,412	\$ 1,825	\$ 1,839	\$ 1,824	\$ 1,714				
4	63	66	81	73	86	76	72	68	69		197.96	284.32	965.60	354.76	417.56	275.42	444.95	549.72	422.94		\$ 1,438	\$ 1,309	\$ 2,982	\$ 1,600	\$ 1,766	\$ 1,976	\$ 2,126	\$ 1,838	\$ 1,689				
5	79	146	103	157	175	86	185	88	125		627.76	4,639.00	1,527.22	5,476.48	5,682.40	323.98	6,617.18	941.42	2,695.41		\$ 2,187	\$ 7,098	\$ 3,498	\$ 7,980	\$ 8,465	\$ 2,336	\$ 10,754	\$ 2,606	\$ 5,056				
6	110	189	175	191	205	196	199	175	188		2,202.32	8,501.10	7,030.98	8,965.98	8,406.36	8,581.26	8,260.96	6,450.06	8,099.80		\$ 4,200	\$ 11,644	\$ 10,768	\$ 12,111	\$ 11,617	\$ 12,902	\$ 12,650	\$ 9,832	\$ 11,800				
7	200	193	189	199	204	214	198	202	200		9,739.26	9,988.64	6,678.91	9,891.16	9,241.96	8,396.05	8,020.61	8,669.57	9,433.97		\$ 13,181	\$ 13,279	\$ 10,991	\$ 13,104	\$ 11,704	\$ 13,069	\$ 12,389	\$ 12,637	\$ 13,723				
8	206	197	196	206	215	219	206	209	263		9,902.92	8,536.10	7,681.16	9,890.66	9,912.98	11,834.39	7,764.92	10,344.43	8,680.54		\$ 13,376	\$ 11,811	\$ 12,577	\$ 13,227	\$ 13,375	\$ 15,693	\$ 13,173	\$ 14,545	\$ 12,901				
9	193	190	182	200	212	217	196	201	190		10,437.54	9,035.80	6,562.26	9,364.84	9,801.94	9,473.72	9,199.26	9,462.04	8,377.17		\$ 13,793	\$ 12,264	\$ 10,717	\$ 12,663	\$ 13,247	\$ 14,330	\$ 13,699	\$ 13,495	\$ 12,098				
10	147	178	154	169	187	173	172	165	166		5,460.60	6,136.88	2,805.99	4,944.42	6,665.24	5,406.14	4,468.28	5,425.76	4,780.99		\$ 8,176	\$ 9,106	\$ 5,972	\$ 7,664	\$ 9,642	\$ 9,324	\$ 8,331	\$ 8,640	\$ 7,957				
11	85	91	79	98	142	102	79	91	109		795.18	623.20	382.40	1,019.00	963.32	862.74	227.80	883.35	1,438.40		\$ 2,266	\$ 2,142	\$ 1,802	\$ 2,517	\$ 2,799	\$ 3,130	\$ 2,024	\$ 2,587	\$ 3,465				
12	71	71	74	79	76	84	75	75	82		205.20	323.26	121.03	301.30	197.90	272.54	539.79	538.60	619.19		\$ 1,489	\$ 1,576	\$ 1,408	\$ 1,597	\$ 1,236	\$ 2,203	\$ 1,171	\$ 1,938	\$ 1,445				
	112	127	120	132	144	131	133	123	134		40,101.38	48,968.06	34,165.39	50,766.20	51,937.46	45,865.66	46,141.72	44,673.70	45,886.96		\$ 64,382	\$ 74,597	\$ 64,893	\$ 76,508	\$ 78,188	\$ 79,600	\$ 81,984	\$ 73,318	\$ 75,386				
	Averages											Totals											Totals										

