



SOUTH FEATHER WATER & POWER AGENCY

TO: Board of Directors

FROM: Matt Colwell, Water Division Manager

DATE: April 19, 2007

RE: General Information (regarding matters not scheduled on agenda)
4/24/07 Board of Directors Meeting

Distribution Operations

Water Division staff has been accomplishing water system maintenance and normal operations tasks. Ongoing projects include irrigation and domestic distribution system betterments; Power Division construction projects, new service installations, and leak repairs.

The contractor installing the Palermo Canal pipeline project through the Cottage Cove subdivision has been experiencing difficulty completing the project in an acceptable manner to the Agency. Mike, Rick McCullough and I have been working with the contractor, engineer, and developer to assure that Agency operations will not be adversely impacted by this project. Mike will elaborate on the project details relating to the pictures below during the scheduled meeting.



The picture at left shows the original installation of a single 36" pipe.



The photo at left and below depicts the contractor installing the revised design of twin 36" pipes to handle the required flow capacity of 35 cubic feet per second.





Bob Cherry and Tom Veurink continue to construct the truck barn at the Forbestown headquarters. The photo at left shows the construction of the raised foundation, including retaining walls connected to column supports for the steel beam metal building that will connect to the existing building at the left of the picture.

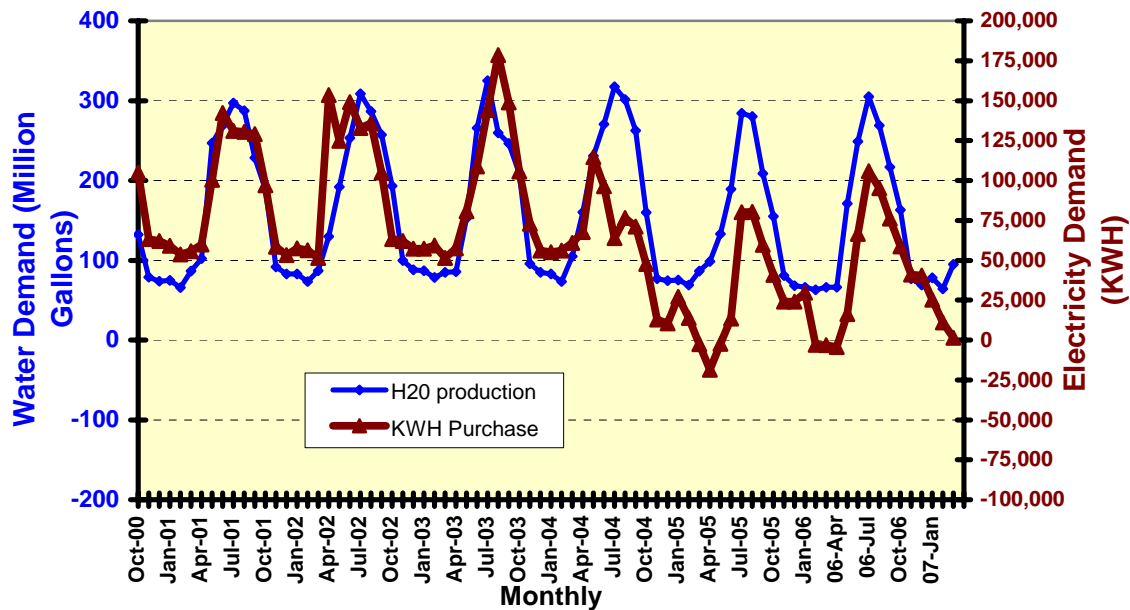
Water Treatment Operations

The dry conditions experienced in March resulted in nearly a 20% increase in the monthly treated water production at MRTP. The cumulative 2007 (Jan-March) water production is approximately 10% above average. Please refer to the table at right and the graph at the end of this report for a historical perspective.

Miners Ranch		March 2007	
Total		99.0 Million Gallons	
High		4.6 MGD	
Low		2.2 MGD	
Avg.		3.2 MGD	
Bangor			
Total		0.31 Million Gallons	
High		0.03 MGD	
Low		0.00 MGD	
Avg.		0.02 MGD	

Solar Plant Production March MRTP energy consumption exceeds solar energy production by 1500 kWh. The graph below provides a perspective of energy consumption compared to water production.

**Miners Ranch Water Treatment Plant
Monthly Water Production VS: KWH Purchased**



M RTP Total Annual Water Production

