



SOUTH FEATHER WATER & POWER AGENCY

TO: Board of Directors

FROM: Matt Colwell, Water Division Manager

DATE: May 19, 2007

RE: General Information (regarding matters not scheduled on agenda)
5/22/07 Board of Directors Meeting

Distribution Operations

Water Division staff has been accomplishing water system maintenance and normal operations tasks. Ongoing projects include irrigation and domestic distribution system betterments; Power Division construction projects, new service installations, and leak repairs.



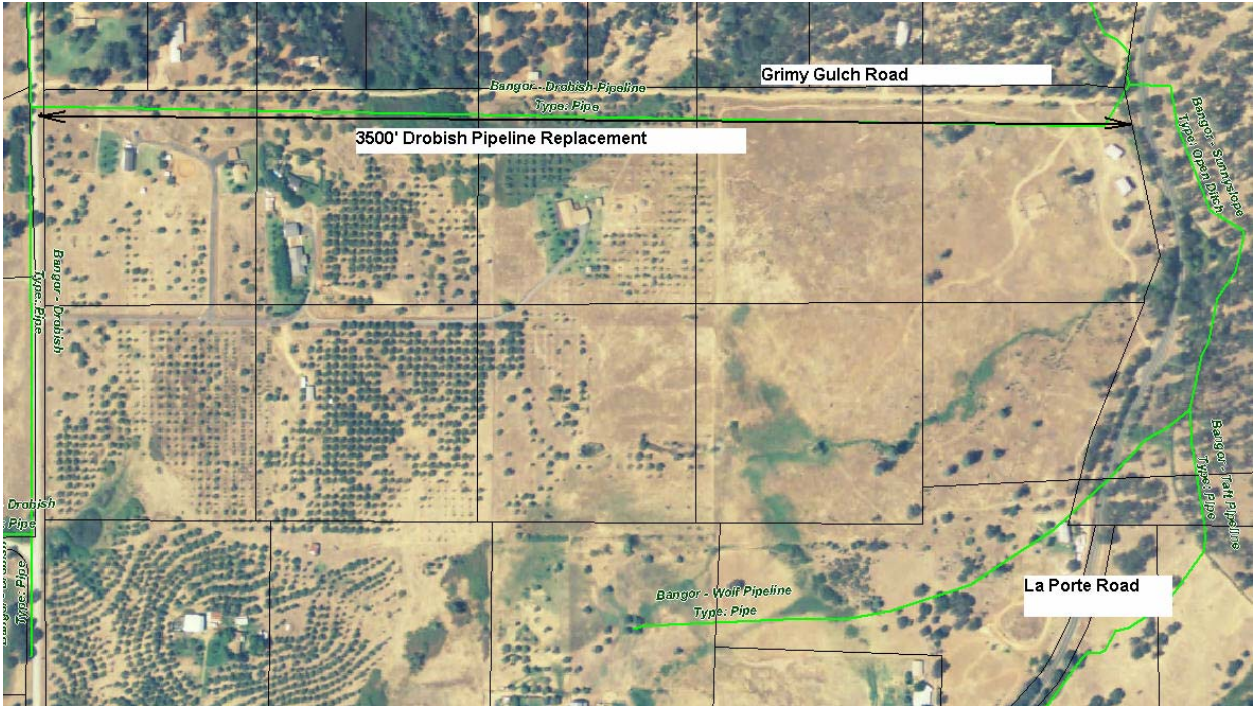
The photo above and at right show the finished inlet and outlet structures flowing at approximately 12 cfs (maximum design capacity of 35 cfs).

Water Division crews are currently

The contractor has satisfactorily completed installation of the Palermo Canal pipeline project through the Cottage Cove subdivision. The project is designed to flow the maximum demands required by the Agency and to significantly reduce the potential hazards associated with residential development near our open-channel facilities. This project is typical of our ongoing efforts to accommodate future development in and around our facilities and still meet the needs of our irrigation customers.



working on the Drobish irrigation pipeline replacement project. The project consists of abandoning the old, very problematic 10-inch steel line and installing new 12" PVC in the Grimy Gulch Road right of way. Replacement was approached as a three-phased project consisting of a total replacement of the approximate 3500-feet over the 2006-2008 budgets. However, trenching is proceeding much more efficiently (few rocks and boulders) than anticipated and currently we are planning on completing the entire project in 2007, within budget. The photo below identifies the proximity of the project.



The photo at right identifies the installation of the of the new PVC line adjacent to the old steel line identified by the blue marking.



The photo above shows the currently leaking water line that has previously been fixed numerous times.



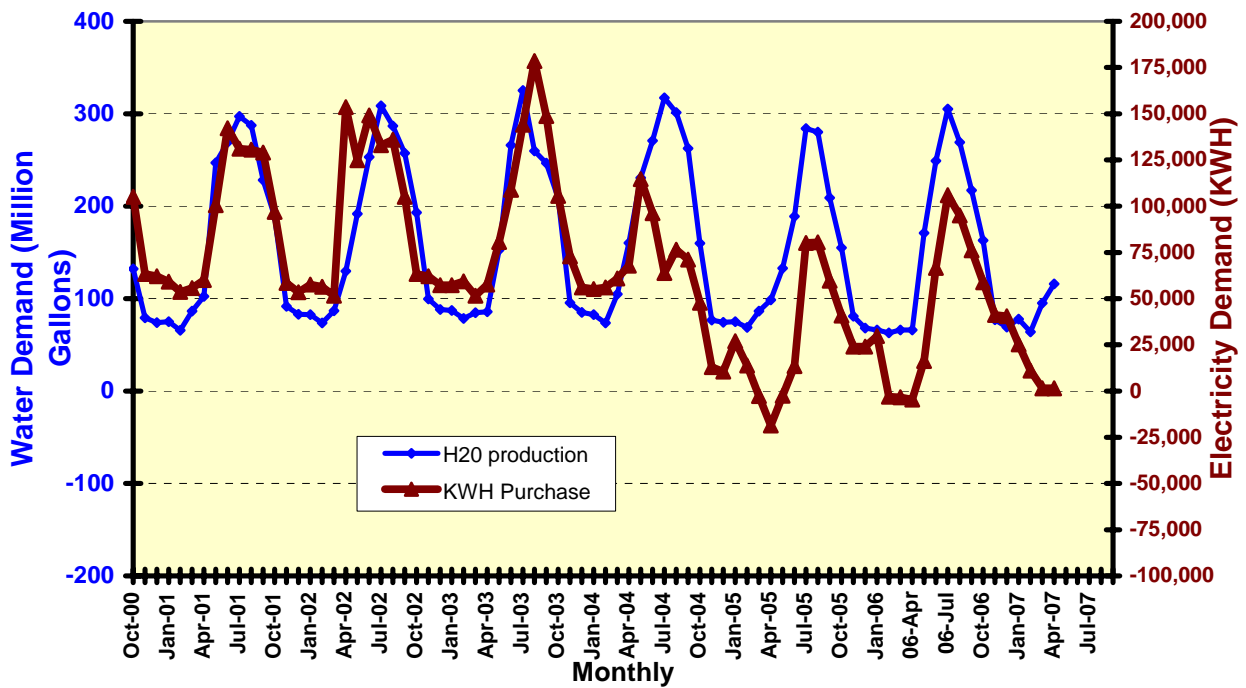
Water Treatment Operations

M RTP monthly treated water production for April was slightly above normal. The cumulative 2007 (Jan-Apr) water production is approximately 5% above average. Please refer to the table at right and the graph at the end of this report for a historical perspective.

Miners Ranch April 2007	
Total	120.6 Million Gallons
High	5.6 MGD
Low	2.5 MGD
Avg.	4.0 MGD
Bangor	
Total	0.52 Million Gallons
High	0.04 MGD
Low	0.00 MGD
Avg.	0.02 MGD

Solar Plant Production March MRTP energy consumption exceeds solar energy production by 1500 kWh. The graph below provides a perspective of energy consumption compared to water production.

**Miners Ranch Water Treatment Plant
Monthly Water Production VS: KWH Purchased**



M RTP Total Annual Water Production

