



SOUTH FEATHER WATER & POWER AGENCY

TO: Board of Directors

FROM: Matt Colwell, Water Division Manager

DATE: June 20, 2007

RE: General Information (regarding matters not scheduled on agenda)
6/26/07 Board of Directors Meeting

Distribution Operations

Water Division staff has been accomplishing water system maintenance and normal operations tasks. Ongoing projects include irrigation and domestic distribution system betterments; Power Division construction projects, new service installations, and leak repairs.

Community Line Water System Infrastructure Improvement Project

You may recall that in early 2006 the Agency submitted a Pre-Application to the California Department of Health Services for a grant-funded project designed to address the problematic water uses of the un-treated water on the Community Line. This Month the Agency has been invited to submit an application for funding from Proposition 50 for this project. The potential grant funding, in the amount of 2.5 million dollars, would be used to construct approximately four miles of new domestic water system feeding Community Line customers. **Unless otherwise directed** by the Board, Water Division staff will continue with the grant application process, including a notice of intent, and a project technical report. Before any project commitments are considered, the Board would be briefed with additional project details and approval to proceed would be requested.

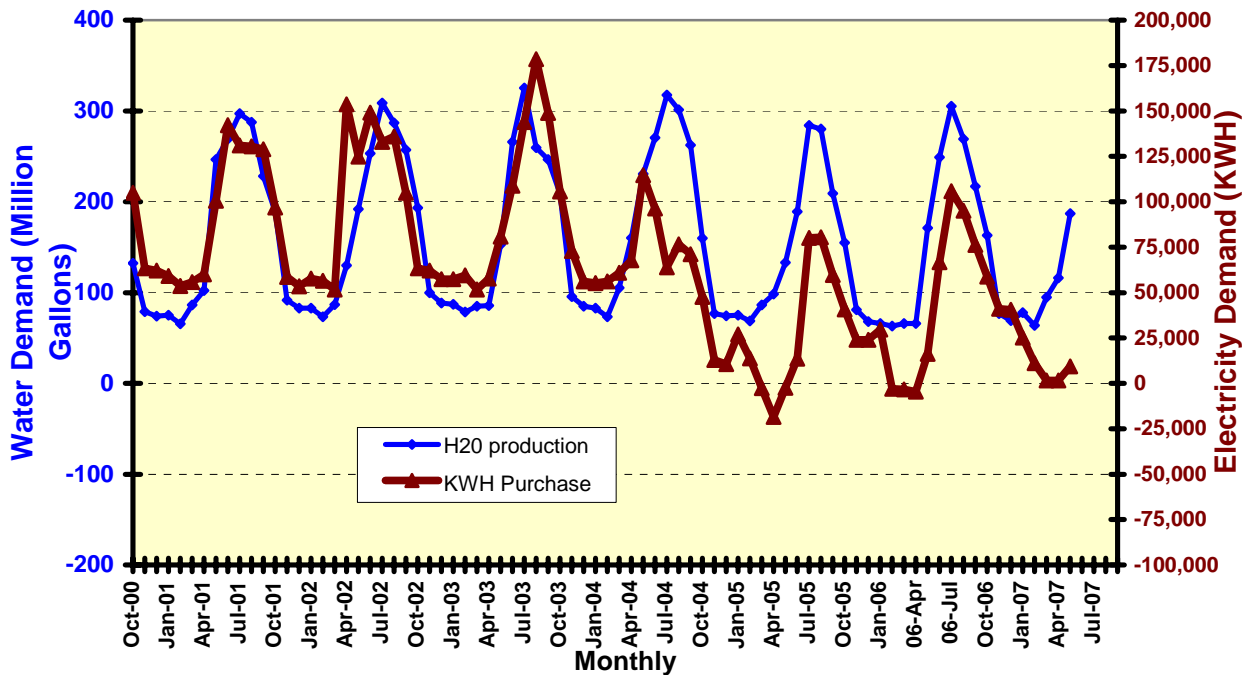
Water Treatment Operations

Miners Ranch May 2007	
Total	193.1 Million Gallons
High	8.6.6 MGD
Low	3.1 MGD
Avg.	6.2 MGD
Bangor	
Total	0.87 Million Gallons
High	0.08 MGD
Low	0.01 MGD

M RTP monthly treated water production for May was slightly above normal. The cumulative 2007 (Jan-May) water production is approximately 5% above average. Please refer to the table at right and the graph at the end of this report for a historical perspective.

Solar Plant Production May MRT P energy consumption exceeds solar energy production by 9300 kWh. The graph below provides a perspective of energy consumption compared to water production.

**Miners Ranch Water Treatment Plant
Monthly Water Production VS: KWH Purchased**



Avg.	0.03 MGD
------	----------

M RTP Total Annual Water Production

