



SOUTH FEATHER WATER & POWER AGENCY

TO: Board of Directors

FROM: Matt Colwell, Water Division Manager

DATE: September 20, 2007

RE: General Information (regarding matters not scheduled on agenda)
9/25/07 Board of Directors Meeting

Distribution Operations

Water Division staff has been accomplishing water system maintenance and normal operations tasks. Ongoing projects include irrigation and domestic distribution system betterments, new service installations, and leak repairs.

Staff are concentrating efforts on the irrigation system to clear brush, trees, vines, and maintain and regain access along the ditch banks. This effort is long overdue and has generated some positive and negative discussions with landowners. We have been aggressively asked to leave and

denied access to some properties. Rick McCullough and staff have exercised good judgment in customer relations to safely and effectively continue on with the task. The pictures at right and below show before and after maintenance activity on a



Forbestown ditch flume across New York Creek.

Water Treatment Operations

M RTP monthly treated water production for August was near normal for the recent 5-year average. The cumulative 2007 (Jan-Aug) water production is also near average. Please refer to the graph at the end of this report for a historical perspective.

M RTP staff has completed improvements to the TEMCOR clear well cover installation providing better protection from rodent, lizard, and bug intrusion into the treated water storage facilities. TEMCOR provided the material and the Agency provided the labor to rectify a mutual problem. The photos below show the addition of a stainless steel mesh that extends 154 feet along

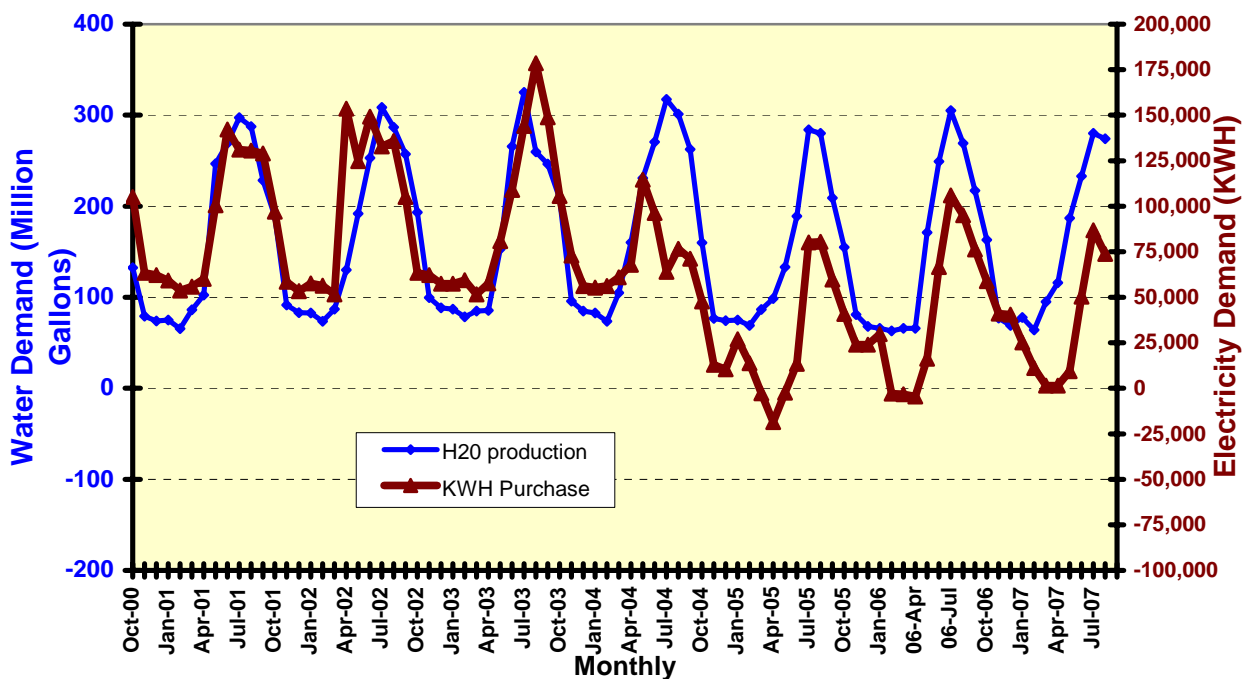
Miners Ranch August 2007	
Total	282.4 Million Gallons
High	11.0 MGD
Low	8.1 MGD
Avg.	9.1 MGD
Bangor	
Total	1.1 Million Gallons
High	0.07 MGD
Low	0.01 MGD

both sides of the TEMCOR cover. Rob Wilcox, Jerry Gentry, and Rex Carbah did an excellent job on the installation.



Solar Plant Production The graph below provides a perspective of energy consumption compared to water production.

**Miners Ranch Water Treatment Plant
Monthly Water Production VS: KWH Purchased**



M RTP Total Annual Water Production

