



SOUTH FEATHER WATER & POWER

TO: Board of Directors

FROM: Steve Wong, Finance Division Manager

DATE: March 18, 2009

RE: General Information (regarding matters not scheduled on the agenda)
3/24/09 Board of Directors Meeting

South Feather Relicensing Consulting Services

Devine, Tarbell and Associates, Inc. (DTA), consultant for the South Feather Project relicensing have submitted invoices and reports covering their progress through January 31, 2009. The payments to DTA for their services on this project to-date amount to \$4,972,096.

Payroll Software and Processing

The Finance Division is continuing the process of up-grading and converting to on-line payroll processing. The first phase of the process is now complete with input taking place at Power Division headquarters and in the Water Division warehouse offices for the field personnel. Leave balances are now printed on the employee pay stubs. The second phase of the automatic interface between ADP, our independent payroll processing company, and our Springbrook general ledger accounting system is almost complete.

2008 Annual Audit

Field work for our 2008 annual audit was completed on March 5, 2009. When the audit report and financial statements are finished, copies will be immediately forwarded to the Board's Finance Committee for review. This is the third and final year of the audit contract with Mann, Urrutia, Nelson, CPAs.

Investments

Guidelines for investing funds are contained in the Agency's Policy #470 and the California Government Code beginning with section 53600. Over the last few years the State of California Local Agency Investment Fund (LAIF) has been the investment vehicle used by the Agency. Because of the State's financial problems, we thought it was prudent to consider other investment alternatives. Other authorized investments include federally-insured certificates of deposit issued by banks. Some of the Agency's funds are now deposited in these certificates. A schedule listing the Agency's investments has been incorporated into the monthly financial report.

South Feather Water & Power
Water Division Financial Report
March 24, 2009 Board Meeting
2007, 2008 and 2009

<u>Account</u>	<u>DESCRIPTION</u>	<u>2007 ACTUAL</u>	<u>2008 ACTUAL</u>	<u>2009 BUDGET</u>	<u>2009 ACTUAL THRU 2/28/09</u>
REVENUE:					
Water Sales Rev					
41100	Domestic Water	2,552,208	2,580,748	2,600,000	304,872
41400	Irrigation Water	252,594	252,037	240,000	14,707
41300	Surplus Water (PG&E)	148,440	159,694	125,000	0
41305	Sly Cr Pwr Generation	122,858	148,375	125,000	0
41450	Woodleaf TWD	6,863	23,443	25,000	0
41500	Surplus Wtr (PGE Sly Cr)	368,000	368,000	368,000	184,000
41502	Surplus Water (Contract)	0	1,650,000	0	0
41600	Sly Creek MOU	77,200	77,200	77,200	38,600
	Sub-Total Water Sales Rev	3,528,163	5,259,497	3,560,200	542,179
Water Serv Chgs					
42301	Sundry Billing (Job Orders)	86,203	152,930	80,000	(446)
42303	Inspection Fees	11,203	2,580	0	0
42341	System Cap Chg (MRTP)	224,812	237,759	150,000	0
	Other Water Serv Charges	33,154	45,290	33,000	16,179
	Sub-Total Water Serv Chgs	355,372	438,559	263,000	15,733
Non-Oper Revenue					
49202	Int-Time Certificates	70,151	46,868	35,000	0
49205	Int-95 COP	30,474	0	0	0
49250	Int-Misc	24,596	24,396	15,000	2,620
49311	Property Taxes	494,987	529,166	495,000	4,068
49312	ERAF Surcharge	(130)	(4)	0	0
49400	Prior Year	9,285	1,410	0	0
49500	Revenue, PG&E	0	93,959	0	0
49625	Back Flow Installation	23,998	34,527	30,000	13,133
49630	Back Flow Inspection	68,901	75,948	75,000	0
49910	PG&E (SFPP)	10,000	7,500	10,000	0
49912	04 Refinancing, Excess Funds	357,865	266,163	252,000	251,618
49932	North Yuba Water District	8,419	12,759	9,000	0
	Other Non-Oper Rev	2,222	45,245	1,000	127
	Transfer In From 1995 COP Res Fd			675,000	0
	Sub-Total Non-Oper Rev	1,100,768	1,137,937	1,597,000	271,566
	TOTAL WATER DIV REVENUE	4,984,303	6,835,993	5,420,200	829,478

South Feather Water & Power
Water Division Financial Report
March 24, 2009 Board Meeting
2007, 2008 and 2009

<u>Account</u>	<u>DESCRIPTION</u>	<u>2007 ACTUAL</u>	<u>2008 ACTUAL</u>	<u>2009 BUDGET</u>	<u>2009 ACTUAL THRU 2/28/09</u>
EXPENSES:					
General Administration, 1-50					
	Salaries & Benefits	1,640,067	1,763,255	735,126	275,838
	Supplies	10,620	26,028	12,700	3,027
	Services	206,002	172,800	198,765	10,033
	Utilities	19,731	21,367	22,000	4,493
	Fuel, Oil, Auto	1,296	1,341	1,500	0
	Training/Dues	73,995	57,893	62,500	26,462
	Total General Admin, 1-50	1,951,711	2,042,684	1,032,591	319,853
Water Source, 1-51					
	Source of Supply	13,579	13,757	14,000	0
	Total Water Source, 1-51	13,579	13,757	14,000	0
Environ Health & Safety, 1-52					
	Salaries & Benefits	29,801	33,743	49,084	3,175
	Supplies	2,275	3,413	7,350	644
	Services	924	3,732	10,300	151
	Utilities	0	0	0	0
	Fuel, Oil, Auto	0	0	15,000	0
	Training/Dues	5,036	5,730	13,525	944
	Total EH&S, 1-52	38,036	46,618	95,259	4,914
Water Treatment, 1-53					
	Salaries & Benefits	394,373	372,884	619,349	56,522
	Supplies	44,898	64,215	63,700	8,364
	Services	10,418	26,048	24,000	4,108
	Utilities	39,605	37,465	45,000	640
	Fuel, Oil, Auto	582	654	700	0
	Training/Dues	0	366	0	0
	Total Water Treat, 1-53	489,876	501,632	752,749	69,634
Transmission & Distribution, 1-54					
	Salaries & Benefits	758,790	773,635	1,242,501	171,198
	Supplies	139,527	142,118	166,000	27,589
	Services	4,978	1,408	2,500	2,439
	Utilities	22,052	25,201	22,000	1,127
	Fuel, Oil, Auto	1,215	1,143	1,000	0
	Training/Dues	269	0	0	0
	Total Trans & Dist, 1-54	926,831	943,505	1,434,001	202,353

South Feather Water & Power
Water Division Financial Report
March 24, 2009 Board Meeting
2007, 2008 and 2009

Account	DESCRIPTION	2007 ACTUAL	2008 ACTUAL	2009 BUDGET	2009 ACTUAL THRU 2/28/09
EXPENSES (CON'T):					
Customer Accounts, 1-55					
	Salaries & Benefits	246,203	283,304	513,946	25,409
	Supplies	55,229	61,767	54,000	3,974
	Services	0	0	0	0
	Utilities	0	0	0	0
	Fuel, Oil, Auto	0	0	0	0
	Training/Dues	0	0	0	0
	Total Cust Accts, 1-55	301,432	345,071	567,946	29,383
General Plant & Shop, 1-56					
	Salaries & Benefits	181,668	211,898	430,262	20,921
	Supplies	12,570	20,883	16,000	3,961
	Services	7,070	4,229	6,000	460
	Utilities	21,233	20,956	22,000	1,006
	Fuel, Oil, Auto	106,270	118,211	110,000	16,064
	Training/Dues	0	0	0	0
	Total Gen Adm & Plant, 1-56	328,811	376,177	584,262	42,412
Sundry & Expense Credits, 1-57					
	Salaries & Benefits	27,446	41,957	82,245	0
	Supplies	(24,592)	(96,980)	(133,500)	(16,775)
	Services	(200,739)	(63,144)	21,000	0
	Utilities	0	0	0	0
	Fuel, Oil, Auto	0	0	0	0
	Training/Dues	0	0	0	0
	Total Sundry, 1-57	(197,885)	(118,167)	(30,255)	(16,775)
Information Technology, 1-58					
	Salaries & Benefits	46,883	44,497	85,589	6,345
	Supplies	7,184	16,012	21,000	0
	Services	3,680	8,605	17,900	800
	Utilities	0	0	3,000	0
	Fuel, Oil, Auto	0	0	0	0
	Training/Dues	20,151	25,096	35,450	0
	Total Info Tech, 1-58	77,898	94,210	162,939	7,145
	TOTAL OPERATING EXPENSES	3,930,289	4,245,487	4,613,492	658,919
	SUB-TOTAL, REVENUES OVER OPER EXP	1,054,014	2,590,506	806,708	170,559

South Feather Water & Power
Water Division Financial Report
March 24, 2009 Board Meeting
2007, 2008 and 2009

<u>Account</u>	<u>DESCRIPTION</u>	<u>2007 ACTUAL</u>	<u>2008 ACTUAL</u>	<u>2009 BUDGET</u>	<u>2009 ACTUAL THRU 2/28/09</u>
SUB-TOTAL, REVENUES OVER OPER EXP		1,054,014	2,590,506	806,708	170,559
Non-Operating, 1-59					
	Supplies & Services	1,094	(122,779)	2,000	0
	Interest	325,100	302,220	244,323	0
	Principal	705,986	746,536	787,127	0
	Non-Operating, 1-59	1,032,180	925,977	1,033,450	0
Available for Capital Outlay Expenses and Relicensing		21,834	1,664,529	(226,742)	170,559
Other Non-Operating Expenses:					
	Capital Outlay	315,596	151,068	494,100	5,403
	Relicensing	423,412	242,483	125,000	13,302
NET REVENUE OVER EXPENSES		(717,174)	1,270,978	(845,842)	151,854
	Beginning Balance	2,050,821	1,333,647	2,340,616	2,604,625
	Ending Balance	1,333,647	2,604,625	1,494,774	2,756,479
Designated for System Capacity:					
	Balance at January 1	1,297,285	1,209,113	1,540,613	1,682,077
	Plus:				
	System Capacity Fees	224,812	237,759	150,000	0
	Loan Repayment	0	340,000	0	0
	Interest	71,120	46,273	30,000	0
	Total Available	1,593,217	1,833,145	1,720,613	1,682,077
	Less:				
	System Capacity Capital Projects	(44,104)	(151,068)	(337,100)	(5,403)
	Loans for General Operations	(340,000)	0	0	0
	Balance at December 31	1,209,113	1,682,077	1,383,513	1,676,674

SCHEDULE OF CASH AND INVESTMENTS

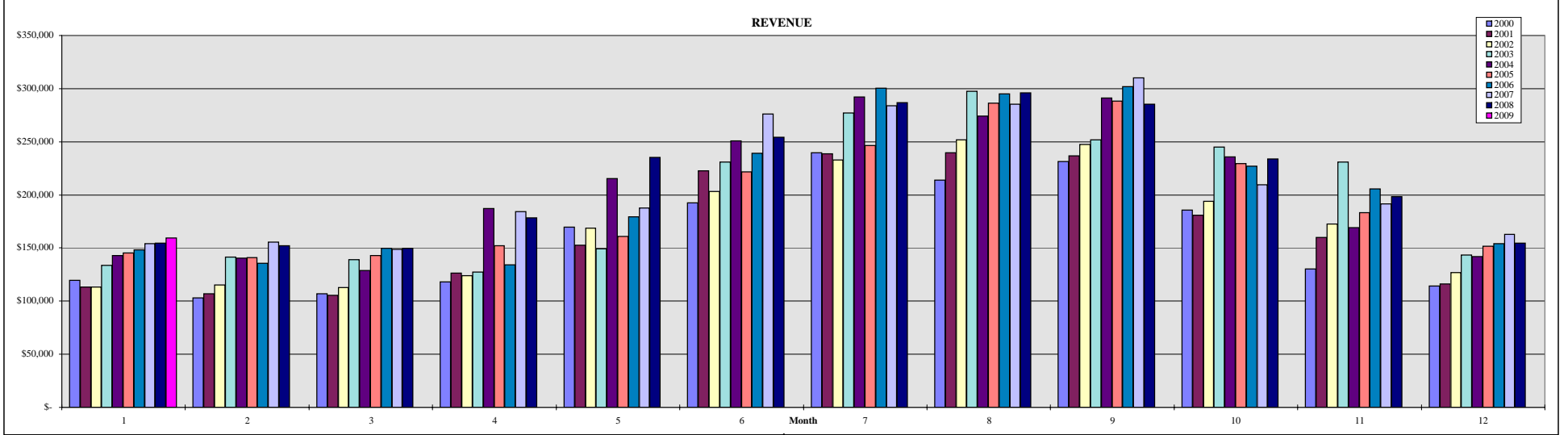
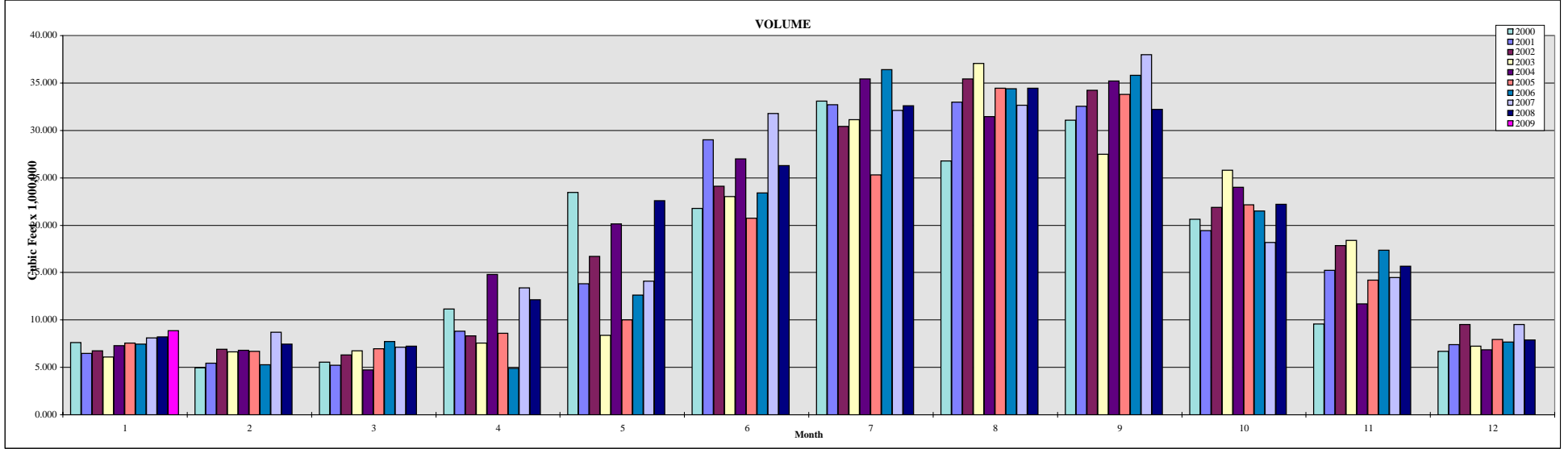
Operations & Maintenance Cash Account	207,337
General Fund Savings Account	52,477
LAIF	1,832,395
Certificates of Deposit	850,667
TOTAL CASH & INVESTMENTS AT 2/28/2009	2,942,876

South Feather Water & Power
Power Division Financial Report
March 24, 2009 Board Meeting
2007, 2008 and 2009

<u>Account</u>	<u>DESCRIPTION</u>	<u>2007 ACTUAL</u>	<u>2008 ACTUAL</u>	<u>2009 BUDGET</u>	<u>2009 ACTUAL THRU 2/28/09</u>
<u>REVENUE</u>					
41150	Electric Operating Income	5,781,166	8,328,170	11,040,000	888,685
41200	PG&E Semi-Annual Pmt-SFPP	3,128,000	3,128,000	0	0
41300	PG&E Semi-Annual Pmt-Sly Cr	1,834,744	1,848,469	0	0
41350	Supplemental Pmt-Sly Creek	0	603,190	0	0
49250	Interest Revenue - SFPP	20,966	8,377	0	1
49261	Interest Revenue - Sly Creek	16,315	3,704	0	8
	Other Revenue	20,725	6,960	0	2,505
	TOTAL REVENUE	10,801,916	13,926,870	11,040,000	891,199
<u>EXPENSES BY ACTIVITY</u>					
Sly Creek, 6-61					
	Operations	232,431	290,695	300,000	48,102
	Routine Maintenance	102,604	76,335	137,000	5,209
	Non-Routine Maintenance	97,367	496,516	21,000	0
	Non-Operating Expenses	0	0	32,000	0
	Additions & Betterments	0	0	0	0
	Total Sly Creek, 6-61	432,402	863,546	490,000	53,311
South Feather Power Project, 6-62 through 6-65					
	Operations	2,969,191	3,180,339	3,187,000	294,324
	Routine Maintenance	1,109,601	938,643	1,056,000	129,023
	Non-Routine Maintenance	523,096	2,305,457	2,932,000	597,334
	Non-Operating Expenses	0	0	80,000	0
	Additions & Betterments	747,599	2,559,507	145,000	0
	Total SFPP, 6-62 to 65	5,349,487	5,349,487	7,400,000	1,020,681
	Depreciation & Amortization	2,851,722	2,838,915	NA	NA
	Debt Service	896,531	630,577	3,150,000	0
	TOTAL EXPENSES BY ACTIVITY	9,530,142	9,682,525	11,040,000	1,073,992

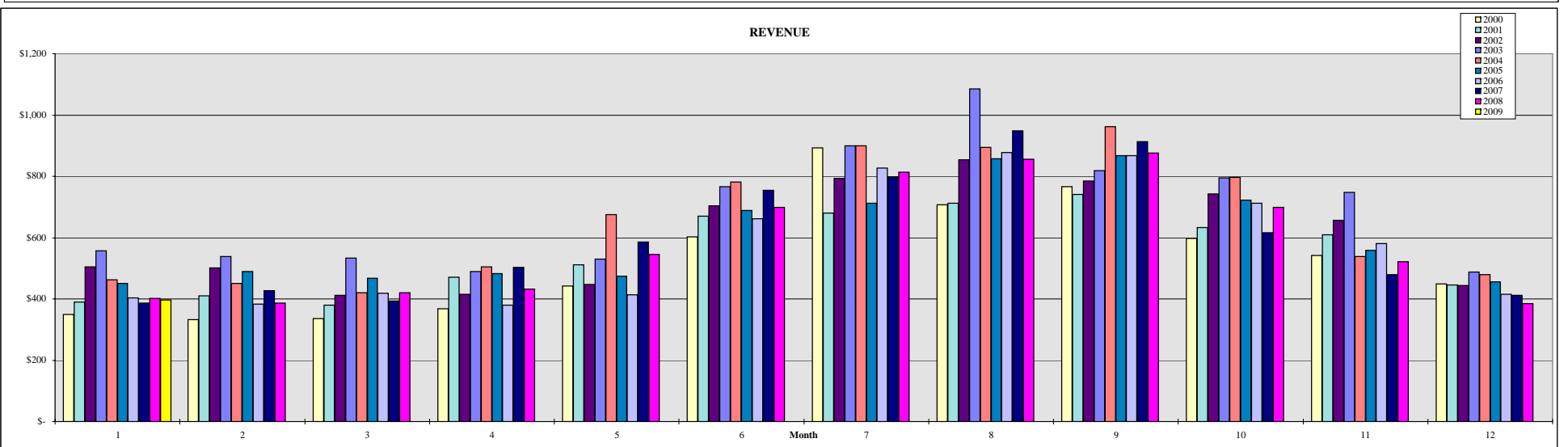
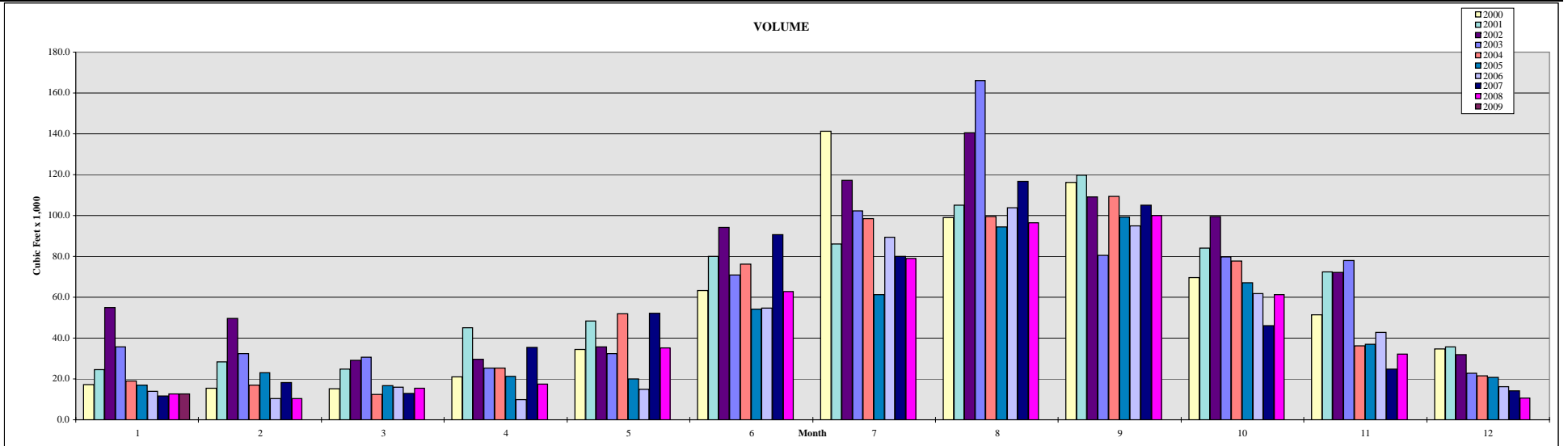
MINERS RANCH TREATMENT PLANT CONSUMPTION: 1998 - 2007

Month	Customers									Volume (x 1,000,000 cf)									Revenue											
	2000	2001	2002	2003	2004	2005	2006	2007	2008	2009	2000	2001	2002	2003	2004	2005	2006	2007	2008	2009	2000	2001	2002	2003	2004	2005	2006	2007	2008	2009
1	6,061	6,113	6,173	6,313	6,429	6,474	6,573	6,669	6,725	6,769	7,639	6,487	6,775	6,122	7,271	7,554	7,448	8,090	8,207	8,889	\$ 119,450	\$ 113,241	\$ 113,477	\$ 133,641	\$ 143,027	\$ 145,277	\$ 148,137	\$ 153,959	\$ 154,692	\$ 159,260
2	6,052	6,120	6,176	6,339	6,420	6,471	6,587	6,679	6,734		4,955	5,431	6,936	6,628	6,796	6,691	5,292	8,699	7,481		\$ 103,050	\$ 106,726	\$ 115,056	\$ 141,679	\$ 140,355	\$ 140,867	\$ 135,734	\$ 155,627	\$ 152,150	
3	6,099	6,112	6,185	6,352	6,418	6,491	6,599	6,683	6,734		5,566	5,228	6,334	6,774	4,730	6,973	7,711	7,152	7,257		\$ 107,018	\$ 105,612	\$ 113,010	\$ 139,244	\$ 128,788	\$ 143,055	\$ 149,585	\$ 148,605	\$ 149,953	
4	6,065	6,123	6,195	6,351	6,431	6,504	6,601	6,692	6,730		11,165	8,803	8,342	7,575	14,813	8,602	4,902	13,375	12,141		\$ 118,114	\$ 126,323	\$ 123,744	\$ 127,524	\$ 186,929	\$ 152,140	\$ 134,041	\$ 184,144	\$ 178,390	
5	6,080	6,122	6,193	6,350	6,425	6,521	6,617	6,696	6,732		23,474	13,808	16,710	8,391	20,148	9,999	12,634	14,079	22,608		\$ 169,787	\$ 152,637	\$ 168,473	\$ 149,448	\$ 215,567	\$ 161,093	\$ 179,334	\$ 187,560	\$ 235,151	
6	6,079	6,138	6,185	6,362	6,430	6,523	6,629	6,729	6,739		21,765	29,002	24,116	23,040	26,978	20,752	23,382	31,806	26,294		\$ 192,266	\$ 222,846	\$ 203,323	\$ 230,840	\$ 250,942	\$ 221,634	\$ 239,100	\$ 276,121	\$ 254,186	
7	6,090	6,146	6,212	6,372	6,447	6,523	6,622	6,704	6,723		33,114	32,707	30,445	31,117	35,443	25,326	36,390	32,093	32,619		\$ 239,881	\$ 238,548	\$ 232,671	\$ 277,024	\$ 292,074	\$ 246,343	\$ 300,406	\$ 284,092	\$ 286,867	
8	6,103	6,148	6,222	6,403	6,451	6,536	6,653	6,711	6,744		26,787	33,005	35,448	37,053	31,434	34,428	34,406	32,652	34,451		\$ 214,049	\$ 239,424	\$ 251,741	\$ 297,688	\$ 273,996	\$ 286,438	\$ 295,228	\$ 285,480	\$ 296,155	
9	6,114	6,152	6,251	6,396	6,463	6,536	6,652	6,715	6,742		31,057	32,518	34,240	27,494	35,193	33,775	35,822	38,006	32,202		\$ 231,555	\$ 236,950	\$ 247,204	\$ 251,588	\$ 291,115	\$ 288,492	\$ 302,033	\$ 310,005	\$ 285,155	
10	6,120	6,156	6,257	6,407	6,463	6,543	6,653	6,722	6,752		20,615	19,410	21,874	25,796	23,999	22,126	21,505	18,185	22,185		\$ 185,800	\$ 180,771	\$ 193,918	\$ 244,822	\$ 235,668	\$ 229,208	\$ 226,935	\$ 209,278	\$ 233,964	
11	6,125	6,162	6,244	6,406	6,460	6,558	6,664	6,720	6,772		9,599	15,217	17,848	18,403	11,714	14,193	17,340	14,944	15,691		\$ 130,495	\$ 160,144	\$ 172,334	\$ 230,893	\$ 169,262	\$ 183,401	\$ 205,562	\$ 191,507	\$ 198,159	
12	6,123	6,174	6,241	6,404	6,477	6,565	6,657	6,726	6,772		6,673	7,380	9,536	7,259	6,858	7,959	7,683	9,550	7,913		\$ 114,130	\$ 116,335	\$ 126,989	\$ 143,185	\$ 142,156	\$ 151,576	\$ 154,272	\$ 162,949	\$ 154,678	
Averages	6,093	6,139	6,211	6,371	6,426	6,520	6,626	6,704	6,742	6,769	202,410	208,996	218,603	205,651	225,378	198,380	214,517	228,180	229,048	8,889	\$ 1,925,595	\$ 1,999,557	\$ 2,061,941	\$ 2,367,575	\$ 2,469,879	\$ 2,349,523	\$ 2,470,368	\$ 2,549,327	\$ 2,579,501	\$ 159,260
Totals																														



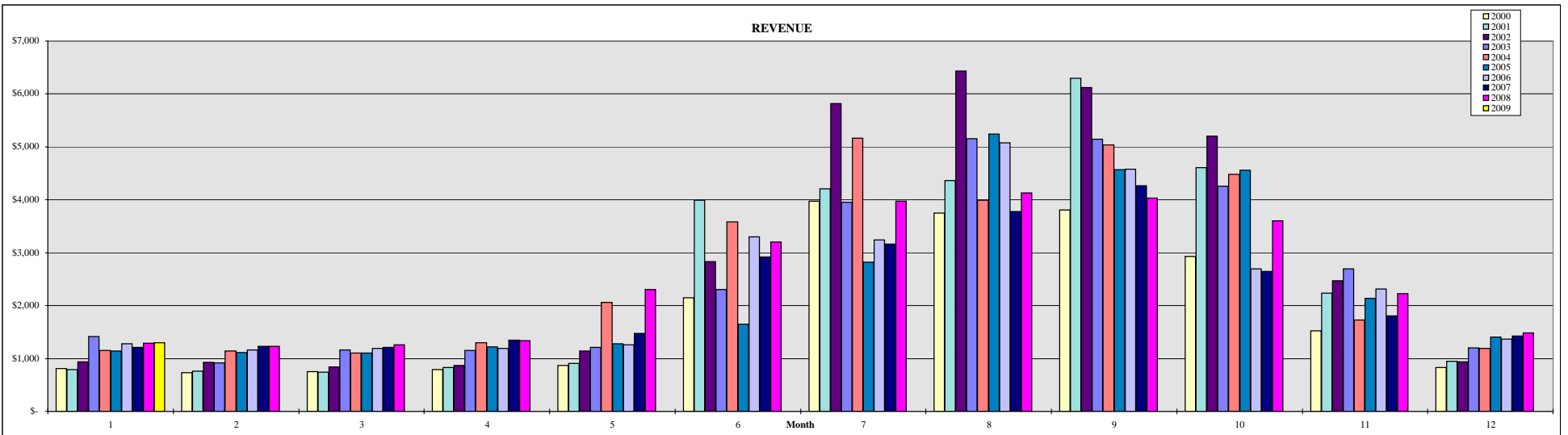
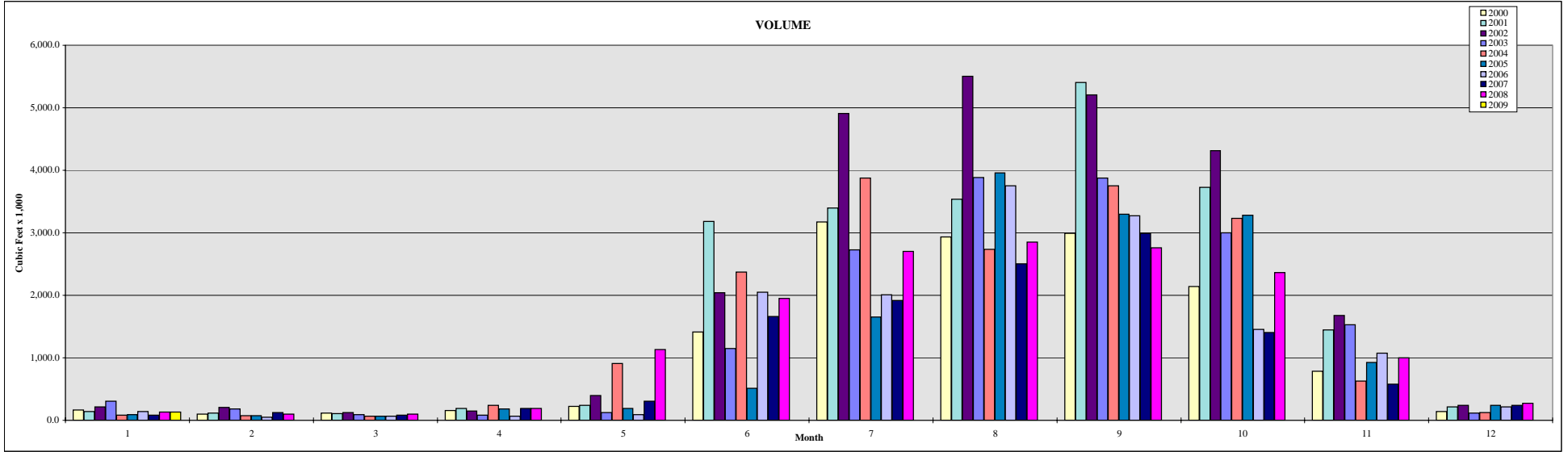
BANGOR TREATMENT PLANT CONSUMPTION: 1998 - 2007

Month	Customers										Volume (x 1,000 cf)									Revenue										
	2000	2001	2002	2003	2004	2005	2006	2007	2008	2009	2000	2001	2002	2003	2004	2005	2006	2007	2008	2009	2000	2001	2002	2003	2004	2005	2006	2007	2008	2009
1	18	18	19	22	22	22	24	23	23	22	17.2	24.6	55.0	35.7	18.9	17.0	13.9	11.8	12.7	12.6	\$ 350	\$ 390	\$ 505	\$ 558	\$ 463	\$ 451	\$ 404	\$ 386	\$ 402	\$ 396
2	18	18	19	22	22	22	23	23	23		15.5	28.3	49.7	32.3	16.9	23.0	10.4	18.2	10.4		\$ 333	\$ 410	\$ 501	\$ 538	\$ 450	\$ 489	\$ 384	\$ 427	\$ 387	
3	18	18	19	23	22	24	23	23	23		15.3	24.7	29.0	30.7	12.3	16.6	16.0	12.9	15.5		\$ 336	\$ 380	\$ 412	\$ 533	\$ 421	\$ 468	\$ 419	\$ 394	\$ 420	
4	17	18	19	23	22	23	23	23	23		20.9	45.0	29.5	25.3	25.4	21.2	9.9	35.5	17.4		\$ 368	\$ 472	\$ 415	\$ 489	\$ 505	\$ 483	\$ 380	\$ 503	\$ 432	
5	17	18	19	22	22	23	23	23	23		34.4	48.4	35.8	32.4	52.0	19.9	15.0	52.2	35.1		\$ 442	\$ 512	\$ 448	\$ 530	\$ 675	\$ 474	\$ 413	\$ 586	\$ 546	
6	18	18	19	21	22	23	24	23	23		63.4	80.1	94.2	70.9	76.2	54.3	54.6	90.6	62.7		\$ 602	\$ 670	\$ 704	\$ 766	\$ 781	\$ 688	\$ 662	\$ 754	\$ 699	
7	18	18	19	21	22	24	22	23	24		141.3	86.1	117.3	102.3	98.4	61.3	89.3	79.9	79.0		\$ 892	\$ 680	\$ 794	\$ 899	\$ 900	\$ 712	\$ 827	\$ 799	\$ 814	
8	18	18	19	21	22	24	23	23	22		99.0	105.1	140.5	166.1	99.4	94.5	103.7	116.7	96.4		\$ 707	\$ 713	\$ 854	\$ 1,086	\$ 895	\$ 858	\$ 878	\$ 948	\$ 855	
9	18	18	21	21	22	23	23	23	22		116.1	119.8	109.1	80.6	109.3	99.2	95.0	105.0	99.9		\$ 767	\$ 740	\$ 785	\$ 818	\$ 962	\$ 867	\$ 868	\$ 913	\$ 876	
10	18	18	20	22	22	23	24	23	22		69.5	84.1	99.4	79.7	77.6	67.2	61.8	46.0	61.2		\$ 598	\$ 633	\$ 743	\$ 795	\$ 797	\$ 723	\$ 712	\$ 615	\$ 699	
11	18	19	22	22	22	23	23	23	22		51.4	72.4	72.2	77.9	36.2	37.0	42.8	24.8	32.2		\$ 542	\$ 610	\$ 657	\$ 749	\$ 538	\$ 559	\$ 580	\$ 480	\$ 521	
12	18	19	21	22	22	23	23	23	22		34.6	35.7	31.8	22.9	21.5	20.7	16.3	14.2	10.7		\$ 449	\$ 446	\$ 445	\$ 489	\$ 480	\$ 456	\$ 415	\$ 411	\$ 384	
	18	18	20	22	22	23	23	23	22		678.6	754.3	863.5	756.8	644.1	531.9	528.8	607.8	533.1	12.6	\$ 6,385	\$ 6,655	\$ 7,261	\$ 8,249	\$ 7,866	\$ 7,229	\$ 6,941	\$ 7,217	\$ 7,034	\$ 396
	Averages										Totals									Totals										



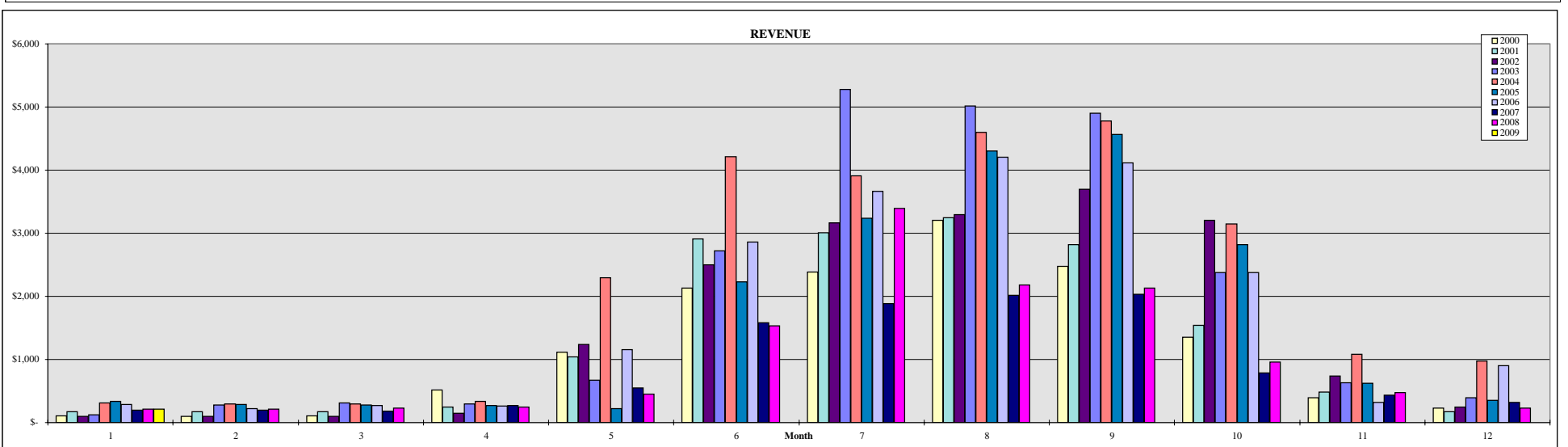
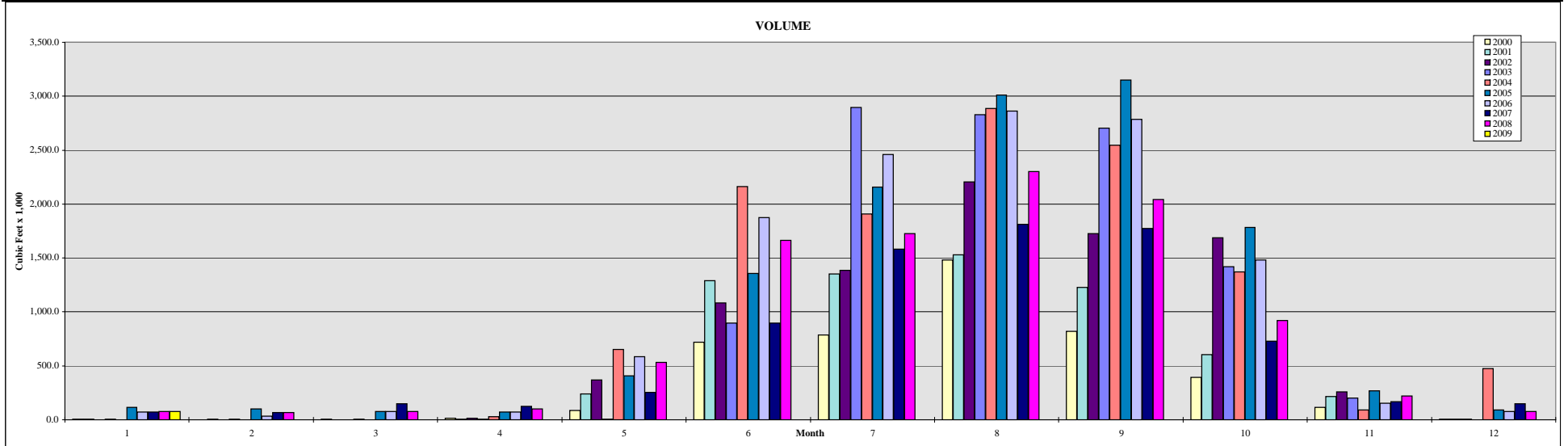
COMMUNITY LINE WATER CONSUMPTION: 1998 - 2007

Month	Customers										Volume (x 1,000 cf)									Revenue										
	2000	2001	2002	2003	2004	2005	2006	2007	2008	2009	2000	2001	2002	2003	2004	2005	2006	2007	2008	2009	2000	2001	2002	2003	2004	2005	2006	2007	2008	2009
1	58	59	65	63	61	60	65	65	66	66	165.7	141.7	211.6	305.8	84.9	89.8	136.5	80.9	130.0	135.7	\$ 809	\$ 794	\$ 933	\$ 1,417	\$ 1,155	\$ 1,142	\$ 1,278	\$ 1,207	\$ 1,289	\$ 1,295
2	57	58	65	59	61	59	64	63	64		101.9	119.0	209.2	183.8	70.9	74.9	47.5	127.8	102.3		\$ 732	\$ 761	\$ 930	\$ 913	\$ 1,141	\$ 1,110	\$ 1,165	\$ 1,234	\$ 1,225	
3	57	58	65	62	59	59	64	65	66		116.4	105.4	125.7	89.9	65.3	68.3	67.8	82.6	100.0		\$ 747	\$ 747	\$ 844	\$ 1,166	\$ 1,100	\$ 1,103	\$ 1,190	\$ 1,211	\$ 1,258	
4	58	58	65	61	60	59	64	66	65		158.0	186.3	150.0	85.9	238.9	179.2	67.6	189.3	193.1		\$ 793	\$ 830	\$ 868	\$ 1,154	\$ 1,296	\$ 1,217	\$ 1,190	\$ 1,344	\$ 1,336	
5	58	63	66	62	64	62	67	66	67		227.0	236.7	399.7	125.1	908.6	189.2	86.9	308.7	1,132.6		\$ 872	\$ 911	\$ 1,138	\$ 1,214	\$ 2,056	\$ 1,280	\$ 1,262	\$ 1,473	\$ 2,308	
6	63	65	67	64	65	64	68	69	68		1,410.4	3,185.5	2,045.4	1,151.2	2,372.5	515.6	2,049.0	1,664.0	1,950.8		\$ 2,152	\$ 3,990	\$ 2,836	\$ 2,306	\$ 3,581	\$ 1,651	\$ 3,300	\$ 2,921	\$ 3,199	
7	66	65	69	65	67	64	67	68	68		3,171.5	3,395.3	4,911.0	2,729.9	3,873.0	1,652.2	2,004.9	1,917.6	2,700.7		\$ 3,972	\$ 4,212	\$ 5,815	\$ 3,949	\$ 5,162	\$ 2,822	\$ 3,238	\$ 3,165	\$ 3,972	
8	66	66	69	66	67	67	70	68	68		2,934.2	3,534.6	5,507.4	3,884.0	2,738.5	3,957.9	3,750.7	2,508.1	2,852.6		\$ 3,748	\$ 4,367	\$ 6,432	\$ 5,156	\$ 3,993	\$ 5,239	\$ 5,080	\$ 3,773	\$ 4,128	
9	66	67	69	66	67	67	69	69	68		2,991.5	5,401.0	5,209.8	3,874.6	3,752.9	3,300.4	3,273.6	2,988.4	2,757.6		\$ 3,807	\$ 6,300	\$ 6,125	\$ 5,146	\$ 5,038	\$ 4,572	\$ 4,579	\$ 4,265	\$ 4,030	
10	66	69	69	67	66	68	68	69	67		2,141.8	3,729.5	4,317.6	2,996.6	3,229.3	3,283.3	1,456.6	1,403.1	2,362.4		\$ 2,932	\$ 4,606	\$ 5,206	\$ 4,259	\$ 4,479	\$ 4,561	\$ 2,690	\$ 2,648	\$ 3,606	
11	65	68	67	64	62	68	69	69	68		788.1	1,448.6	1,680.5	1,531.5	625.5	923.8	1,077.1	582.2	1,003.6		\$ 1,526	\$ 2,236	\$ 2,468	\$ 2,697	\$ 1,729	\$ 2,142	\$ 2,317	\$ 1,807	\$ 2,224	
12	62	66	63	62	61	66	68	69			141.6	210.8	236.1	113.2	122.1	240.7	215.3	239.5	274.6		\$ 828	\$ 943	\$ 936	\$ 1,202	\$ 1,193	\$ 1,403	\$ 1,368	\$ 1,423	\$ 1,482	
Averages	62	64	67	63	63	64	67	67	66		14,348.1	21,694.4	25,004.0	17,071.5	18,082.4	14,475.3	14,233.5	12,092.2	15,560.3	135.7	\$ 22,918	\$ 30,695	\$ 34,532	\$ 30,579	\$ 31,923	\$ 28,241	\$ 28,657	\$ 26,471	\$ 30,058	\$ 1,295
Totals																														



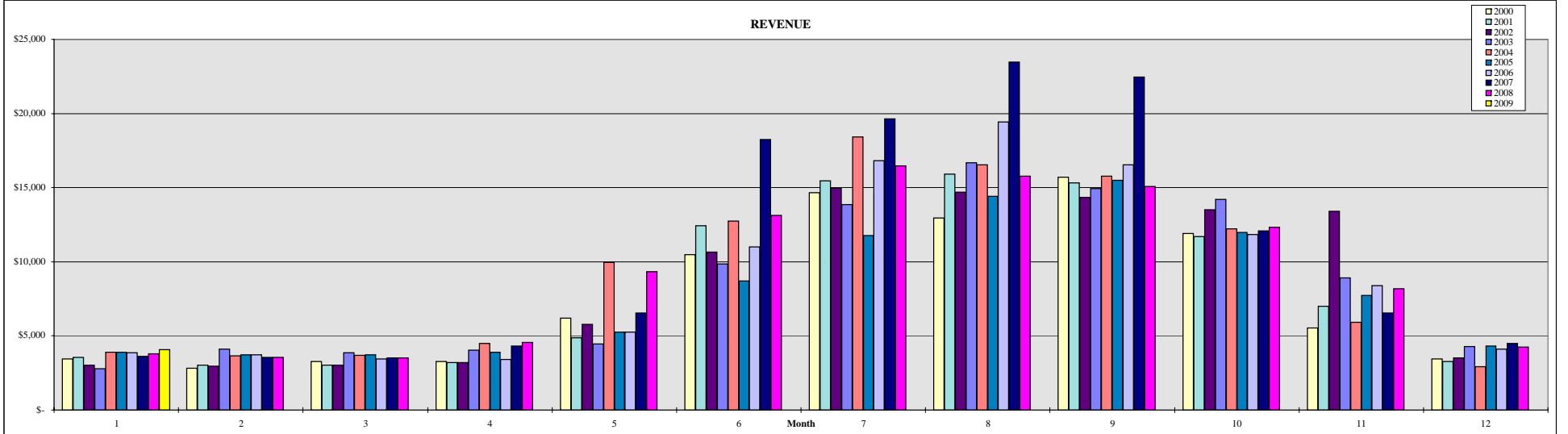
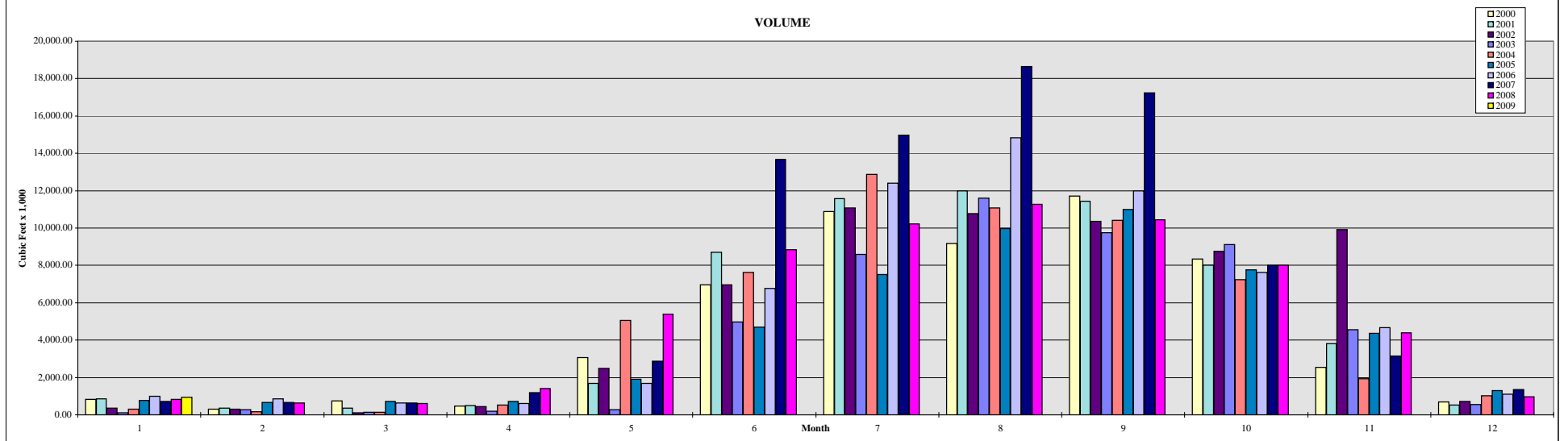
FORBESTOWN DITCH WATER CONSUMPTION: 1998 - 2007

Month	Customers										Volume (x 1,000 cf)									Revenue										
	2000	2001	2002	2003	2004	2005	2006	2007	2008	2009	2000	2001	2002	2003	2004	2005	2006	2007	2008	2009	2000	2001	2002	2003	2004	2005	2006	2007	2008	2009
1	5	7	5	7	10	14	11	6	7	7	4.5	2.4	1.7	4.3	1.7	115.5	74.2	73.7	74.6	76.5	\$ 105	\$ 169	\$ 102	\$ 127	\$ 312	\$ 335	\$ 284	\$ 196	\$ 215	\$ 217
2	5	5	5	8	9	12	10	6	7	7	2.3	2.4	1.7	3.1	0.8	99.2	34.5	66.5	66.5		\$ 102	\$ 168	\$ 102	\$ 278	\$ 293	\$ 290	\$ 222	\$ 196	\$ 214	
3	5	7	5	9	9	11	10	5	8	8	2.8	1.9	2.1	2.7	0.4	74.8	74.3	149.4	74.4		\$ 103	\$ 169	\$ 102	\$ 313	\$ 293	\$ 280	\$ 267	\$ 179	\$ 232	
4	13	9	7	9	10	10	10	7	7	7	15.1	4.3	14.6	2.5	26.8	72.8	71.4	123.0	101.9		\$ 513	\$ 244	\$ 151	\$ 295	\$ 338	\$ 268	\$ 266	\$ 267	\$ 245	
5	24	24	27	15	37	23	26	14	13	13	87.3	240.6	368.8	5.5	650.7	409.5	583.1	253.4	531.3		\$ 1,119	\$ 1,040	\$ 1,241	\$ 673	\$ 2,292	\$ 222	\$ 1,157	\$ 552	\$ 454	
6	36	45	39	38	48	36	42	30	28	28	721.3	1,291.0	1,083.5	896.5	2,164.7	1,359.0	1,873.7	896.1	1,664.7		\$ 2,135	\$ 2,909	\$ 2,503	\$ 2,724	\$ 4,210	\$ 2,229	\$ 2,862	\$ 1,581	\$ 1,532	
7	46	47	50	50	51	47	49	36	30	30	784.7	1,350.7	1,387.3	2,898.2	1,907.3	2,157.2	2,459.6	1,583.2	1,725.4		\$ 2,387	\$ 3,012	\$ 3,162	\$ 5,276	\$ 3,907	\$ 3,241	\$ 3,667	\$ 1,888	\$ 3,393	
8	52	48	46	47	54	53	53	37	36	36	1,483.7	1,530.4	2,207.7	2,829.6	2,885.7	3,009.0	2,863.3	1,810.4	2,299.0		\$ 3,205	\$ 3,243	\$ 3,299	\$ 5,013	\$ 4,597	\$ 4,301	\$ 4,205	\$ 2,014	\$ 2,178	
9	46	46	53	48	56	54	52	37	36	36	817.6	1,226.4	1,726.4	2,705.8	2,544.3	3,150.0	2,784.4	1,772.5	2,042.9		\$ 2,478	\$ 2,820	\$ 3,700	\$ 4,900	\$ 4,780	\$ 4,564	\$ 4,116	\$ 2,035	\$ 2,131	
10	38	42	41	29	44	43	44	20	20	20	392.3	606.2	1,688.6	1,419.9	1,370.4	1,785.5	1,480.9	726.4	918.5		\$ 1,352	\$ 1,543	\$ 3,202	\$ 2,374	\$ 3,147	\$ 2,817	\$ 2,373	\$ 784	\$ 962	
11	13	12	18	14	11	18	7	14	12	12	113.8	214.1	259.7	203.3	90.6	270.1	154.4	168.2	222.7		\$ 395	\$ 488	\$ 737	\$ 634	\$ 1,081	\$ 620	\$ 317	\$ 436	\$ 475	
12	5	5	10	12	22	14	8	8	8	8	6.5	4.4	3.7	2.1	474.9	89.5	74.6	148.3	75.4		\$ 230	\$ 170	\$ 249	\$ 392	\$ 973	\$ 353	\$ 904	\$ 316	\$ 233	
	40	42	43	38	48	43	44	29	27	#DIV/0!	4,431.9	6,474.8	8,745.8	10,973.5	12,118.3	12,592.1	12,528.4	7,771.2	9,797.4	76.5	\$ 14,125	\$ 15,974	\$ 18,548	\$ 23,001	\$ 26,221	\$ 19,520	\$ 20,641	\$ 10,445	\$ 12,264	\$ 217
	Averages										Totals									Totals										



BANGOR DITCH WATER CONSUMPTION: 1998 - 2007

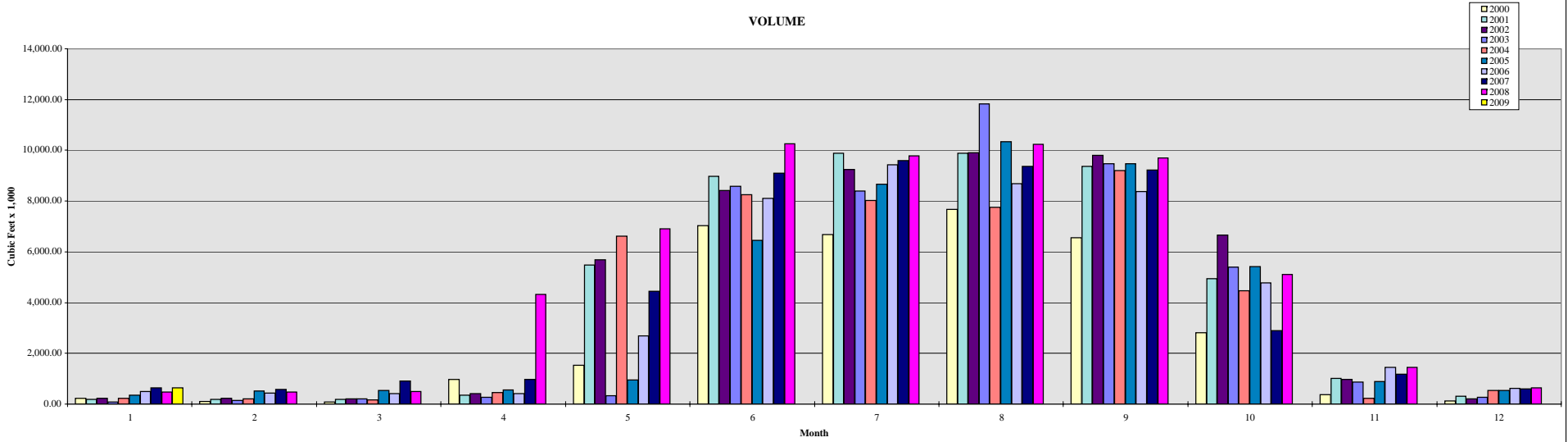
Month	Customers										Volume (x 1,000 cf)										Revenue									
	2000	2001	2002	2003	2004	2005	2006	2007	2008	2009	2000	2001	2002	2003	2004	2005	2006	2007	2008	2009	2000	2001	2002	2003	2004	2005	2006	2007	2008	2009
1	156	166	169	153	166	183	157	159	163	173	837.44	859.72	346.08	117.70	298.02	783.28	999.46	724.20	842.00	948.91	\$ 3,435	\$ 3,568	\$ 3,026	\$ 2,781	\$ 3,888	\$ 3,896	\$ 3,866	\$ 3,620	\$ 3,806	\$ 4,086
2	153	143	168	171	164	163	155	157	158		303.18	361.76	293.68	266.06	154.00	663.21	844.31	669.71	631.89		\$ 2,803	\$ 3,020	\$ 2,961	\$ 4,122	\$ 3,650	\$ 3,729	\$ 3,730	\$ 3,556	\$ 3,541	
3	153	163	168	169	164	163	153	160	160		754.78	372.62	97.02	133.18	132.34	720.10	643.28	645.28	620.43		\$ 3,264	\$ 3,033	\$ 3,018	\$ 3,860	\$ 3,682	\$ 3,741	\$ 3,441	\$ 3,513	\$ 3,525	
4	160	165	174	168	178	170	152	171	173		461.80	487.16	431.74	187.56	522.04	708.38	605.38	1,176.41	1,402.61		\$ 3,265	\$ 3,206	\$ 3,219	\$ 4,034	\$ 4,479	\$ 3,904	\$ 3,400	\$ 4,332	\$ 4,559	
5	179	191	204	184	212	187	192	198	213		3,072.74	1,674.56	2,480.72	288.72	5,044.56	1,915.86	1,689.26	2,877.85	5,377.98		\$ 6,184	\$ 4,883	\$ 5,786	\$ 4,464	\$ 9,950	\$ 5,274	\$ 5,263	\$ 6,556	\$ 9,335	
6	200	211	216	212	219	212	217	223	217		6,947.80	8,703.04	6,959.76	4,964.58	7,615.46	4,708.74	6,759.58	13,677.09	8,852.45		\$ 10,482	\$ 12,439	\$ 10,641	\$ 9,842	\$ 12,741	\$ 8,689	\$ 11,012	\$ 18,261	\$ 13,123	
7	210	216	223	220	241	219	218	227	230		10,891.28	11,582.04	11,067.80	8,588.32	12,886.23	7,522.74	12,410.45	14,958.77	10,229.44		\$ 14,675	\$ 15,467	\$ 14,963	\$ 13,871	\$ 18,402	\$ 11,780	\$ 16,807	\$ 19,641	\$ 16,476	
8	213	219	227	220	229	226	222	227	226		9,182.30	11,999.64	10,774.98	11,602.54	11,088.18	9,961.04	14,843.95	18,647.25	11,273.23		\$ 12,941	\$ 15,918	\$ 14,707	\$ 16,675	\$ 16,533	\$ 14,425	\$ 19,431	\$ 23,465	\$ 15,758	
9	221	220	226	221	226	223	225	227	235		11,723.20	11,423.02	10,348.92	9,755.90	10,421.12	10,981.46	11,988.86	17,226.77	10,452.92		\$ 15,704	\$ 15,307	\$ 14,357	\$ 14,926	\$ 15,787	\$ 15,496	\$ 16,535	\$ 22,473	\$ 15,090	
10	202	215	219	216	216	221	218	213	223		8,352.52	7,999.32	8,768.44	9,115.18	7,235.44	7,757.52	7,617.21	8,000.91	8,021.02		\$ 11,923	\$ 11,707	\$ 13,508	\$ 14,196	\$ 12,207	\$ 11,990	\$ 11,845	\$ 12,099	\$ 12,319	
11	182	195	199	196	182	185	196	183	204		2,553.02	3,808.04	9,929.70	4,545.10	1,943.22	4,363.88	4,658.00	3,146.31	4,399.09		\$ 5,548	\$ 6,995	\$ 13,400	\$ 8,930	\$ 5,912	\$ 7,743	\$ 8,379	\$ 6,562	\$ 8,184	
12	171	173	178	172	176	165	174	175	180		690.56	537.32	718.90	548.50	1,022.73	1,286.40	1,106.82	1,342.71	978.35		\$ 3,438	\$ 3,261	\$ 3,510	\$ 4,298	\$ 2,930	\$ 4,314	\$ 4,119	\$ 4,500	\$ 4,239	
Averages	183	190	198	192	198	193	190	193	199	173	55,770.62	59,808.24	62,217.74	50,113.34	58,363.33	51,372.61	64,166.58	83,093.25	63,081.42	948.91	\$ 93,662	\$ 98,806	\$ 103,095	\$ 102,000	\$ 110,160	\$ 94,980	\$ 107,827	\$ 128,578	\$ 109,955	\$ 4,086
	Averages										Totals										Totals									



PALERMO DITCH WATER CONSUMPTION: 1998 - 2007

Month	Customers										Volume (x 1,000 cf)									Revenue										
	2000	2001	2002	2003	2004	2005	2006	2007	2008	2009	2000	2001	2002	2003	2004	2005	2006	2007	2008	2009	2000	2001	2002	2003	2004	2005	2006	2007	2008	2009
1	70	70	78	56	75	71	71	80	80	80	236.90	189.36	220.22	84.60	219.66	342.90	491.02	636.15	467.73	638.54	\$ 1,465	\$ 1,380	\$ 1,491	\$ 1,067	\$ 1,945	\$ 1,548	\$ 1,811	\$ 2,124	\$ 1,898	\$ 2,100
2	67	70	76	73	72	68	69	79	76		97.27	187.48	230.52	148.02	208.66	519.50	426.59	586.00	466.70		\$ 1,384	\$ 1,370	\$ 1,435	\$ 1,746	\$ 1,881	\$ 1,828	\$ 1,728	\$ 2,095	\$ 1,860	
3	67	68	76	74	72	68	70	79	76		75.67	180.76	197.06	206.80	169.64	546.35	420.94	916.98	486.41		\$ 1,330	\$ 1,296	\$ 1,412	\$ 1,825	\$ 1,839	\$ 1,824	\$ 1,714	\$ 2,043	\$ 1,866	
4	81	73	86	76	72	68	69	89	150		965.60	354.76	417.56	275.42	444.95	549.72	422.94	973.82	4,331.96		\$ 2,982	\$ 1,600	\$ 1,766	\$ 1,976	\$ 2,126	\$ 1,838	\$ 1,689	\$ 2,636	\$ 7,122	
5	103	157	175	86	185	88	125	159	174		1,527.22	5,476.48	5,682.40	323.98	6,617.18	941.42	2,695.41	4,445.04	6,901.03		\$ 3,498	\$ 7,980	\$ 8,465	\$ 2,336	\$ 10,754	\$ 2,606	\$ 5,066	\$ 7,460	\$ 10,203	
6	175	191	205	196	199	175	188	202	205		7,030.98	8,965.98	8,406.36	8,581.26	8,260.96	6,450.06	8,099.80	9,103.04	10,264.94		\$ 10,768	\$ 12,111	\$ 11,617	\$ 12,902	\$ 12,650	\$ 9,832	\$ 11,800	\$ 13,087	\$ 14,335	
7	189	199	204	214	198	202	200	204	219		6,678.91	9,891.16	9,241.96	8,396.05	8,020.61	8,669.57	9,433.97	9,592.59	9,783.62		\$ 10,991	\$ 13,104	\$ 11,704	\$ 13,069	\$ 12,389	\$ 12,637	\$ 13,723	\$ 13,612	\$ 14,055	
8	196	206	215	219	206	209	263	201	207		7,681.16	9,890.66	9,912.98	11,834.39	7,764.92	10,344.43	8,680.54	9,372.64	10,238.86		\$ 12,577	\$ 13,227	\$ 13,375	\$ 15,693	\$ 13,173	\$ 14,545	\$ 12,901	\$ 13,326	\$ 14,322	
9	182	200	212	217	196	201	190	205	219		6,562.26	9,364.84	9,801.94	9,473.72	9,199.26	9,462.04	8,377.17	9,218.87	9,706.46		\$ 10,717	\$ 12,663	\$ 13,247	\$ 14,330	\$ 13,699	\$ 13,495	\$ 12,098	\$ 13,235	\$ 13,975	
10	154	169	187	173	172	165	166	144	163		2,805.99	4,944.42	6,665.24	5,406.14	4,468.28	5,425.76	4,780.99	2,900.42	5,106.18		\$ 5,972	\$ 7,664	\$ 9,642	\$ 9,324	\$ 8,331	\$ 8,640	\$ 7,957	\$ 5,544	\$ 8,194	
11	79	98	142	102	79	91	109	109	112		382.40	1,019.00	963.32	862.74	227.80	883.35	1,438.40	1,168.79	1,441.04		\$ 1,802	\$ 2,517	\$ 2,799	\$ 3,130	\$ 2,024	\$ 2,587	\$ 3,465	\$ 3,128	\$ 3,498	
12	74	79	76	84	75	75	82	85	90		121.03	301.30	197.90	272.54	539.79	538.60	619.19	594.79	632.75		\$ 1,408	\$ 1,597	\$ 1,236	\$ 2,203	\$ 1,171	\$ 1,938	\$ 1,445	\$ 2,111	\$ 2,251	
Averages	120	132	144	131	133	123	134	136	148	80	34,165.39	50,766.20	51,937.46	45,865.66	46,141.72	44,673.70	45,886.96	49,509.13	59,827.69	638.54	\$ 64,893	\$ 76,508	\$ 78,188	\$ 79,600	\$ 81,984	\$ 73,318	\$ 75,386	\$ 80,401	\$ 93,579	\$ 2,100
	Averages										Totals									Totals										

VOLUME



REVENUE

