



## ***SOUTH FEATHER WATER & POWER AGENCY***

---

**TO:** Board of Directors

**FROM:** Steve Wong, Finance Division Manager

**DATE:** May 19, 2009

**RE:** General Information (regarding matters not scheduled on the agenda)  
5/26/09 Board of Directors Meeting

### **South Feather Relicensing Consulting Services**

Devine, Tarbell and Associates, Inc. (DTA), consultant for the FERC relicensing South Feather Power Project have submitted invoices and reports covering their progress through February 28, 2009. The payments to DTA for their services on this project to-date amount to \$4,976,850.

### **Butte County Property Tax Payment**

SFWPA received its first major property tax payment from the County for the 2009 year in the amount of \$201,660. Property Tax Revenue represents over 10% of the Agency's recurring Water Division revenue. The payment exceeds the amount received at this time in 2008 and the forecast for 2009 property tax revenue will now be in excess of our budget estimate. However, it is likely the State budget and fiscal problems will impact this revenue source to the Agency in the future.

### **Woodleaf TWD**

PG&E sent a check in the amount of \$16,787 for Woodleaf Tailwater Depression activity and another \$411 for electric energy generated from surplus water in March, 2009. It is anticipated that additional revenue will come from these sources before the year is over.

### **Springbrook Conference**

The annual conference for Springbrook Software was held May 5 – 8 in Portland. Springbrook is the provider of the Agency's accounting and utility-billing software. This was my first time to attend this conference and it was informative and educational. I was also able to visit with other Springbrook users, including a representative from Paradise Irrigation District and a few others from California.

South Feather Water & Power  
Water Division Financial Report  
May 26, 2009 Board Meeting  
2007, 2008 and 2009

<u>Account</u>	<u>DESCRIPTION</u>	<u>2007</u> <u>ACTUAL</u>	<u>2008</u> <u>ACTUAL</u>	<u>2009</u> <u>BUDGET</u>	<u>2009</u> <u>ACTUAL</u> <u>THRU 4/30/09</u>
<b>REVENUE:</b>					
<b>Water Sales Rev</b>					
41100	Domestic Water	2,552,208	2,580,748	2,600,000	607,188
41400	Irrigation Water	252,594	252,037	240,000	29,202
41300	Surplus Water (PG&E)	148,440	159,694	125,000	4,299
41305	Sly Cr Pwr Generation	122,858	148,375	125,000	0
41450	Woodleaf TWD	6,863	23,443	25,000	16,788
41500	Surplus Wtr (PGE Sly Cr)	368,000	368,000	368,000	184,000
41502	Surplus Water (Contract)	0	1,650,000	0	0
41600	Sly Creek MOU	77,200	77,200	77,200	38,600
	Sub-Total Water Sales Rev	3,528,163	5,259,497	3,560,200	880,077
<b>Water Serv Chgs</b>					
42301	Sundry Billing (Job Orders)	86,203	152,930	80,000	(1,875)
42303	Inspection Fees	11,203	2,580	0	0
42341	System Cap Chg (MRTP)	224,812	237,759	150,000	0
	Other Water Serv Charges	33,154	45,290	33,000	30,034
	Sub-Total Water Serv Chgs	355,372	438,559	263,000	28,159
<b>Non-Oper Revenue</b>					
49202	Int-Time Certificates	70,151	46,868	35,000	9,208
49205	Int-95 COP	30,474	0	0	0
49250	Int-Misc	24,596	24,396	15,000	5,465
49311	Property Taxes	494,987	529,166	495,000	5,231
49312	ERAF Surcharge	(130)	(4)	0	0
49400	Prior Year	9,285	1,410	0	0
49500	Revenue, PG&E	0	93,959	0	0
49625	Back Flow Installation	23,998	34,527	30,000	1,387
49630	Back Flow Inspection	68,901	75,948	75,000	26,131
49910	PG&E (SFPP)	10,000	10,000	10,000	0
49912	04 Refinancing, Excess Funds	357,865	266,163	252,000	251,618
49932	North Yuba Water District	8,419	12,759	9,000	0
	Other Non-Oper Rev	2,222	47,205	1,000	2,968
	Transfer In From 1995 COP Res Fd			675,000	686,859
	Sub-Total Non-Oper Rev	1,100,768	1,142,397	1,597,000	988,867
	<b>TOTAL WATER DIV REVENUE</b>	4,984,303	6,840,453	5,420,200	1,897,103

South Feather Water & Power  
Water Division Financial Report  
May 26, 2009 Board Meeting  
2007, 2008 and 2009

<u>Account</u>	<u>DESCRIPTION</u>	<u>2007 ACTUAL</u>	<u>2008 ACTUAL</u>	<u>2009 BUDGET</u>	<u>2009 ACTUAL THRU 4/30/09</u>
<b>EXPENSES:</b>					
General Administration, 1-50					
	Salaries & Benefits	1,640,067	1,763,255	735,126	572,774
	Supplies	10,620	26,028	12,700	6,848
	Services	206,002	172,800	198,765	40,889
	Utilities	19,731	21,367	22,000	10,086
	Fuel, Oil, Auto	1,296	1,341	1,500	50
	Training/Dues	73,995	57,893	62,500	31,737
	Total General Admin, 1-50	1,951,711	2,042,684	1,032,591	662,384
Water Source, 1-51					
	Source of Supply	13,579	13,757	14,000	0
	Total Water Source, 1-51	13,579	13,757	14,000	0
Environ Health & Safety, 1-52					
	Salaries & Benefits	29,801	33,743	49,084	10,518
	Supplies	2,275	3,413	7,350	3,773
	Services	924	3,732	10,300	1,716
	Utilities	0	0	0	0
	Fuel, Oil, Auto	0	0	15,000	0
	Training/Dues	5,036	5,730	13,525	1,265
	Total EH&S, 1-52	38,036	46,618	95,259	17,272
Water Treatment, 1-53					
	Salaries & Benefits	394,373	372,884	619,349	128,776
	Supplies	44,898	64,215	63,700	22,082
	Services	10,418	26,048	24,000	6,681
	Utilities	39,605	37,465	45,000	2,543
	Fuel, Oil, Auto	582	654	700	0
	Training/Dues	0	366	0	0
	Total Water Treat, 1-53	489,876	501,632	752,749	160,082
Transmission & Distribution, 1-54					
	Salaries & Benefits	758,790	773,635	1,242,501	327,504
	Supplies	139,527	142,118	166,000	51,010
	Services	4,978	1,408	2,500	5,673
	Utilities	22,052	25,201	22,000	3,540
	Fuel, Oil, Auto	1,215	1,143	1,000	4
	Training/Dues	269	0	0	0
	Total Trans & Dist, 1-54	926,831	943,505	1,434,001	387,731

South Feather Water & Power  
Water Division Financial Report  
May 26, 2009 Board Meeting  
2007, 2008 and 2009

<u>Account</u>	<u>DESCRIPTION</u>	<u>2007 ACTUAL</u>	<u>2008 ACTUAL</u>	<u>2009 BUDGET</u>	<u>2009 ACTUAL THRU 4/30/09</u>
<u>EXPENSES (CON'T):</u>					
Customer Accounts, 1-55					
	Salaries & Benefits	246,203	283,304	513,946	61,435
	Supplies	55,229	61,767	54,000	18,192
	Services	0	0	0	0
	Utilities	0	0	0	0
	Fuel, Oil, Auto	0	0	0	0
	Training/Dues	0	0	0	0
	Total Cust Accts, 1-55	301,432	345,071	567,946	79,627
General Plant & Shop, 1-56					
	Salaries & Benefits	181,668	211,898	430,262	47,455
	Supplies	12,570	20,883	16,000	5,959
	Services	7,070	4,229	6,000	984
	Utilities	21,233	20,956	22,000	5,283
	Fuel, Oil, Auto	106,270	118,211	110,000	30,072
	Training/Dues	0	0	0	0
	Total Gen Adm & Plant, 1-56	328,811	376,177	584,262	89,753
Sundry & Expense Credits, 1-57					
	Salaries & Benefits	27,446	41,957	82,245	586
	Supplies	(24,592)	(96,980)	(133,500)	(27,332)
	Services	(200,739)	(63,144)	21,000	(5,788)
	Utilities	0	0	0	0
	Fuel, Oil, Auto	0	0	0	0
	Training/Dues	0	0	0	0
	Total Sundry, 1-57	(197,885)	(118,167)	(30,255)	(32,534)
Information Technology, 1-58					
	Salaries & Benefits	46,883	44,497	85,589	14,407
	Supplies	7,184	16,012	21,000	2,192
	Services	3,680	8,605	17,900	4,595
	Utilities	0	0	3,000	0
	Fuel, Oil, Auto	0	0	0	0
	Training/Dues	20,151	25,096	35,450	8,463
	Total Info Tech, 1-58	77,898	94,210	162,939	29,657
	TOTAL OPERATING EXPENSES	3,930,289	4,245,487	4,613,492	1,393,972
	SUB-TOTAL, REVENUES OVER OPER EXP	1,054,014	2,594,966	806,708	503,131

South Feather Water & Power  
Water Division Financial Report  
May 26, 2009 Board Meeting  
2007, 2008 and 2009

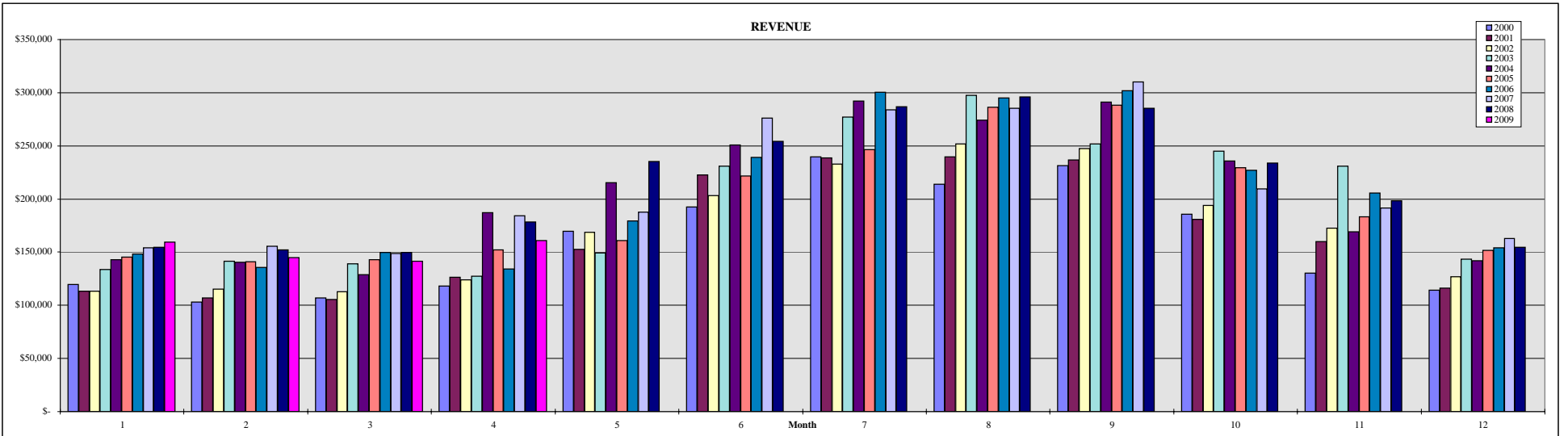
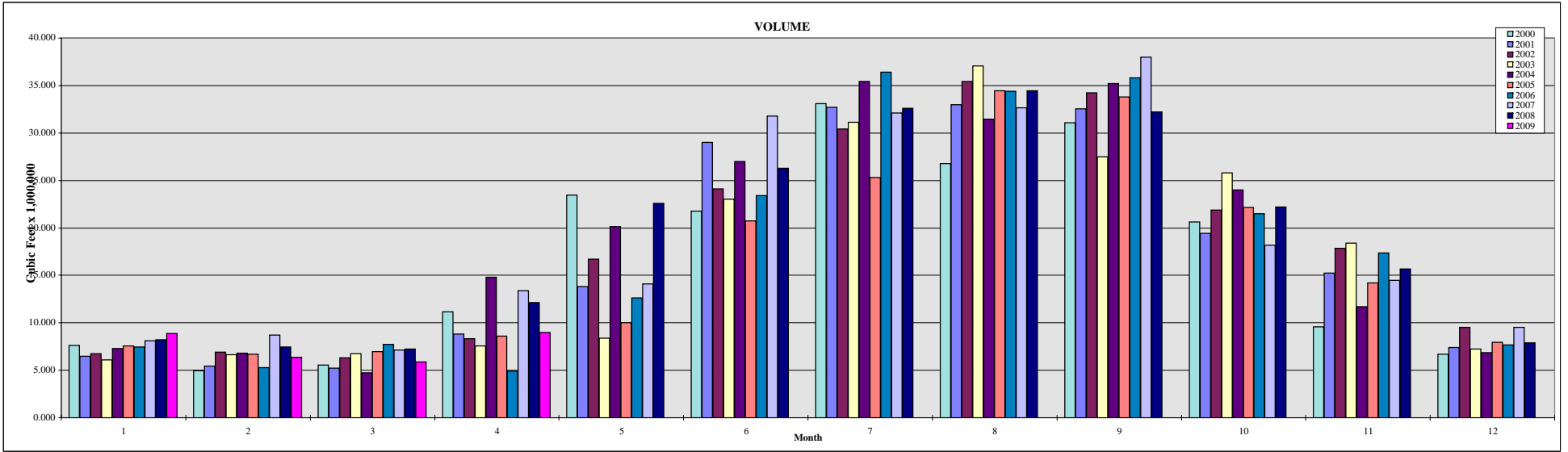
<u>Account</u>	<u>DESCRIPTION</u>	<u>2007 ACTUAL</u>	<u>2008 ACTUAL</u>	<u>2009 BUDGET</u>	<u>2009 ACTUAL THRU 4/30/09</u>
SUB-TOTAL, REVENUES OVER OPER EXP		1,054,014	2,594,966	806,708	503,131
Non-Operating, 1-59					
	Supplies & Services	1,094	(122,779)	2,000	0
	Interest	325,100	302,220	244,323	120,361
	Principal	705,986	746,536	787,127	675,000
	Non-Operating, 1-59	1,032,180	925,977	1,033,450	795,361
Available for Capital Outlay Expenses and Relicensing		21,834	1,668,989	(226,742)	(292,230)
Other Non-Operating Expenses:					
	Capital Outlay	315,596	151,068	494,100	26,383
	Relicensing	423,412	242,483	125,000	23,917
NET REVENUE OVER EXPENSES		(717,174)	1,275,438	(845,842)	(342,530)
Beginning Balance		2,050,821	1,333,647	2,340,616	2,609,085
Ending Balance		1,333,647	2,609,085	1,494,774	2,266,555
<u>DESIGNATED FOR SYSTEM CAPACITY</u>					
Balance at January 1		1,297,285	1,209,113	1,540,613	1,682,077
Plus:					
	System Capacity Fees	224,812	237,759	150,000	0
	Loan Repayment	0	340,000	0	0
	Interest	71,120	46,273	30,000	0
Total Available		1,593,217	1,833,145	1,720,613	1,682,077
Less:					
	System Capacity Capital Projects	(44,104)	(151,068)	(337,100)	26,383
	Loans for General Operations	(340,000)	0	0	0
Balance at December 31		1,209,113	1,682,077	1,383,513	1,708,460
<u>SCHEDULE OF CASH AND INVESTMENTS</u>					
General Fund Savings Account					87,255
LAIF					1,616,460
Certificates of Deposit, Matures 5/7/09					501,898
TOTAL CASH & INVESTMENTS AT 4/30/2009					2,205,613

South Feather Water & Power  
Power Division Financial Report  
May 26, 2009 Board Meeting  
2007, 2008 and 2009

<u>Account</u>	<u>DESCRIPTION</u>	<u>2007</u> <u>ACTUAL</u>	<u>2008</u> <u>ACTUAL</u>	<u>2009</u> <u>BUDGET</u>	<u>2009</u> <u>ACTUAL</u> <u>THRU 4/30/09</u>
<u>REVENUE</u>					
41150	Electric Operating Income	5,781,166	9,225,257	5,866,866	3,673,426
41200	PG&E Semi-Annual Pmt-SFPP	3,128,000	3,128,000	3,128,000	0
41300	PG&E Semi-Annual Pmt-Sly Cr	1,834,744	1,848,469	1,840,000	0
41350	Supplemental Pmt-Sly Creek	0	603,190	0	0
49250	Interest Revenue - SFPP	20,966	8,377	0	664
49261	Interest Revenue - Sly Creek	16,315	3,704	0	14
	Other Revenue	20,725	6,960	205,134	205,578
	<b>TOTAL REVENUE</b>	<b>10,801,916</b>	<b>14,823,957</b>	<b>11,040,000</b>	<b>3,879,682</b>
<u>EXPENSES BY ACTIVITY</u>					
Sly Creek, 6-61					
	Operations	232,431	290,695	300,000	116,862
	Routine Maintenance	102,604	63,785	137,000	43,803
	Non-Routine Maintenance	97,367	496,516	21,000	0
	Non-Operating Expenses	555,620	399,394	32,000	2,753
	Additions & Betterments	0	0	0	0
	<b>Total Sly Creek, 6-61</b>	<b>988,022</b>	<b>1,250,390</b>	<b>490,000</b>	<b>163,418</b>
South Feather Power Project, 6-62 through 6-65					
	Operations	2,969,191	3,180,339	3,187,000	1,346,845
	Routine Maintenance	1,109,601	938,643	1,056,000	82,394
	Non-Routine Maintenance	523,096	2,305,457	2,932,000	1,259,372
	Non-Operating Expenses	338,860	300,778	80,000	42,094
	Additions & Betterments	747,599	2,559,507	145,000	30,120
	<b>Total SFPP, 6-62 to 65</b>	<b>5,688,347</b>	<b>9,284,724</b>	<b>7,400,000</b>	<b>2,760,825</b>
	Debt Service	3,704,211	3,954,000	3,150,000	2,975,812
	<b>TOTAL EXPENSES BY ACTIVITY</b>	<b>10,380,580</b>	<b>14,489,114</b>	<b>11,040,000</b>	<b>5,900,055</b>

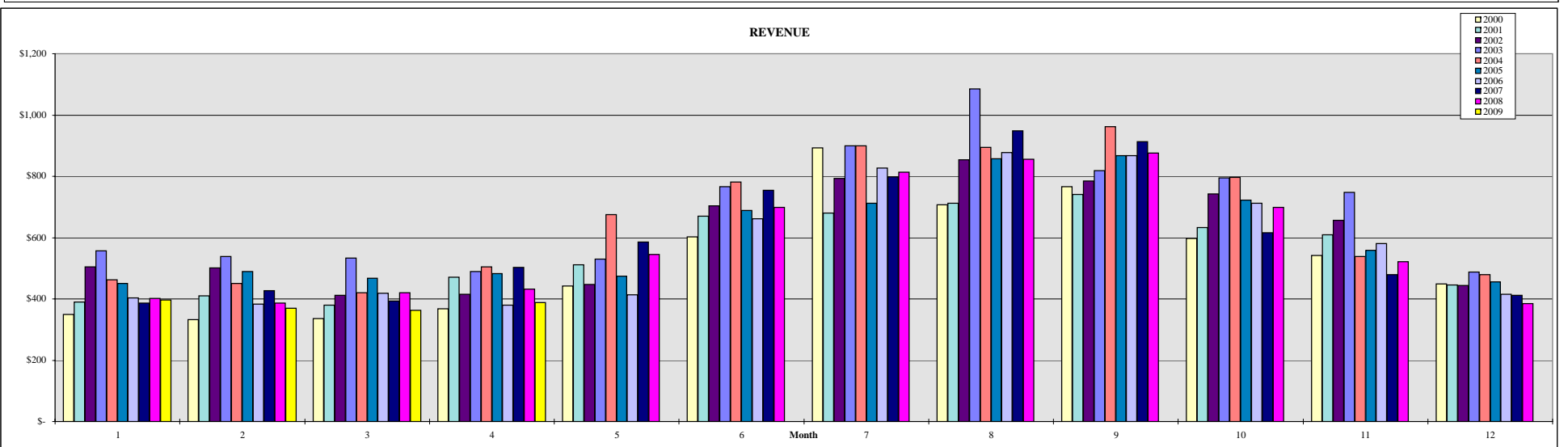
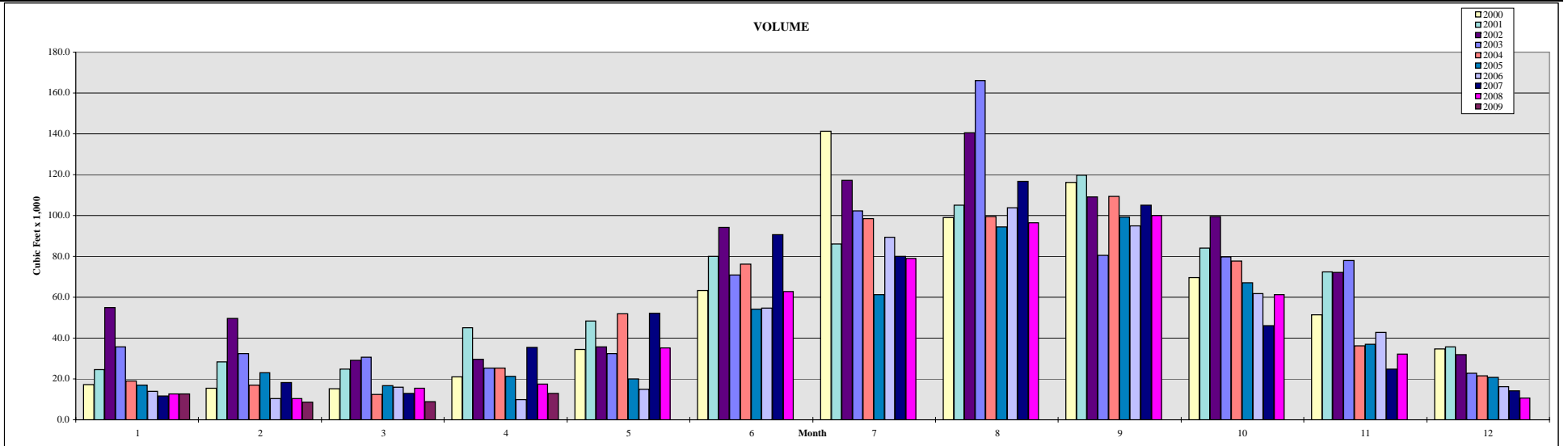
**MINERS RANCH TREATMENT PLANT CONSUMPTION: 1998 - 2007**

Month	Customers										Volume (x 1,000,000 cf)										Revenue									
	2000	2001	2002	2003	2004	2005	2006	2007	2008	2009	2000	2001	2002	2003	2004	2005	2006	2007	2008	2009	2000	2001	2002	2003	2004	2005	2006	2007	2008	2009
1	6,061	6,113	6,173	6,313	6,429	6,474	6,573	6,669	6,725	6,769	7,639	6,487	6,775	6,122	7,271	7,554	7,448	8,090	8,207	8,889	\$ 119,450	\$ 113,241	\$ 113,477	\$ 133,641	\$ 143,027	\$ 145,277	\$ 148,137	\$ 153,959	\$ 154,692	\$ 159,260
2	6,052	6,120	6,176	6,339	6,420	6,471	6,587	6,679	6,734	6,769	4,955	5,431	6,936	6,628	6,796	6,691	5,292	8,699	7,481	6,365	\$ 103,050	\$ 106,726	\$ 115,056	\$ 141,679	\$ 140,355	\$ 140,867	\$ 135,734	\$ 155,627	\$ 152,150	\$ 145,022
3	6,099	6,112	6,185	6,352	6,418	6,491	6,599	6,683	6,734	6,611	5,566	5,228	6,334	6,774	4,730	6,973	7,711	7,152	7,257	5,880	\$ 107,018	\$ 105,612	\$ 113,010	\$ 139,244	\$ 128,788	\$ 143,055	\$ 149,585	\$ 148,605	\$ 149,953	\$ 141,538
4	6,065	6,123	6,195	6,351	6,431	6,504	6,601	6,692	6,730	6,617	11,165	8,803	8,342	7,575	14,813	8,602	4,902	13,375	12,141	9,000	\$ 118,114	\$ 126,323	\$ 123,744	\$ 127,524	\$ 186,929	\$ 152,140	\$ 134,041	\$ 184,144	\$ 178,390	\$ 160,660
5	6,080	6,122	6,193	6,350	6,425	6,521	6,617	6,696	6,732		23,474	13,808	16,710	8,391	20,148	9,999	12,634	14,079	22,608		\$ 169,787	\$ 152,637	\$ 168,473	\$ 149,448	\$ 215,567	\$ 161,093	\$ 179,334	\$ 187,560	\$ 235,151	
6	6,079	6,138	6,185	6,362	6,430	6,523	6,629	6,729	6,739		21,765	29,002	24,116	23,040	26,978	20,752	23,382	31,806	26,294		\$ 192,266	\$ 222,846	\$ 203,323	\$ 230,840	\$ 250,942	\$ 221,634	\$ 239,100	\$ 276,121	\$ 254,186	
7	6,090	6,146	6,212	6,372	6,447	6,523	6,622	6,704	6,723		33,114	32,707	30,445	31,117	35,443	25,326	36,390	32,093	32,619		\$ 239,881	\$ 238,548	\$ 232,671	\$ 277,024	\$ 292,074	\$ 246,343	\$ 300,406	\$ 284,092	\$ 286,867	
8	6,103	6,148	6,222	6,403	6,451	6,536	6,653	6,711	6,744		26,787	33,005	35,448	37,053	31,434	34,428	34,406	32,652	34,451		\$ 214,049	\$ 239,424	\$ 251,741	\$ 297,688	\$ 273,996	\$ 286,438	\$ 295,228	\$ 285,480	\$ 296,155	
9	6,114	6,152	6,251	6,396	6,463	6,536	6,652	6,715	6,742		31,057	32,518	34,240	27,494	35,193	33,775	35,822	38,006	32,202		\$ 231,555	\$ 236,950	\$ 247,204	\$ 251,588	\$ 291,115	\$ 288,492	\$ 302,033	\$ 310,005	\$ 285,155	
10	6,120	6,156	6,257	6,407	6,463	6,543	6,653	6,722	6,752		20,615	19,410	21,874	25,796	23,999	22,126	21,505	18,185	22,185		\$ 185,800	\$ 180,771	\$ 193,918	\$ 244,822	\$ 235,668	\$ 229,208	\$ 226,935	\$ 209,278	\$ 233,964	
11	6,125	6,162	6,244	6,406	6,460	6,558	6,664	6,720	6,772		9,599	15,217	17,848	18,403	11,714	14,193	17,340	14,944	15,691		\$ 130,495	\$ 160,144	\$ 172,334	\$ 230,893	\$ 169,262	\$ 183,401	\$ 205,562	\$ 191,507	\$ 198,159	
12	6,123	6,174	6,241	6,404	6,477	6,565	6,657	6,726	6,772		6,673	7,380	9,536	7,259	6,858	7,959	7,683	9,550	7,913		\$ 114,130	\$ 116,335	\$ 126,989	\$ 143,185	\$ 142,156	\$ 151,576	\$ 154,272	\$ 162,949	\$ 154,678	
Averages	6,093	6,139	6,211	6,371	6,426	6,520	6,626	6,704	6,742	6,692	202,410	208,996	218,603	205,651	225,378	198,380	214,517	228,180	229,048	30,134	\$ 1,925,595	\$ 1,999,557	\$ 2,061,941	\$ 2,367,575	\$ 2,469,879	\$ 2,349,523	\$ 2,470,368	\$ 2,549,327	\$ 2,579,501	\$ 606,481
Totals																														



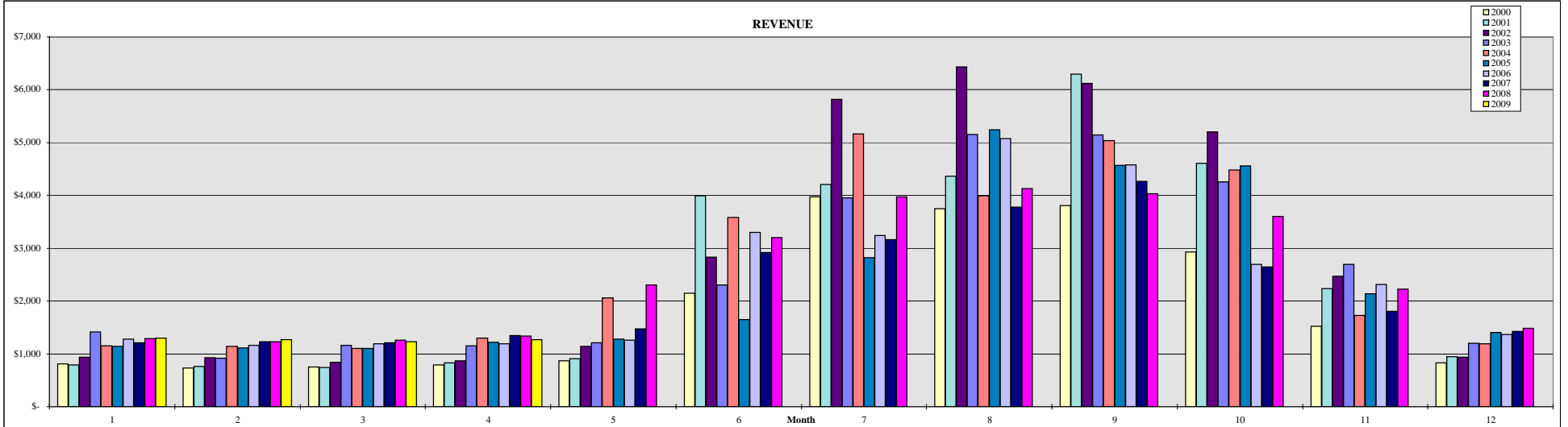
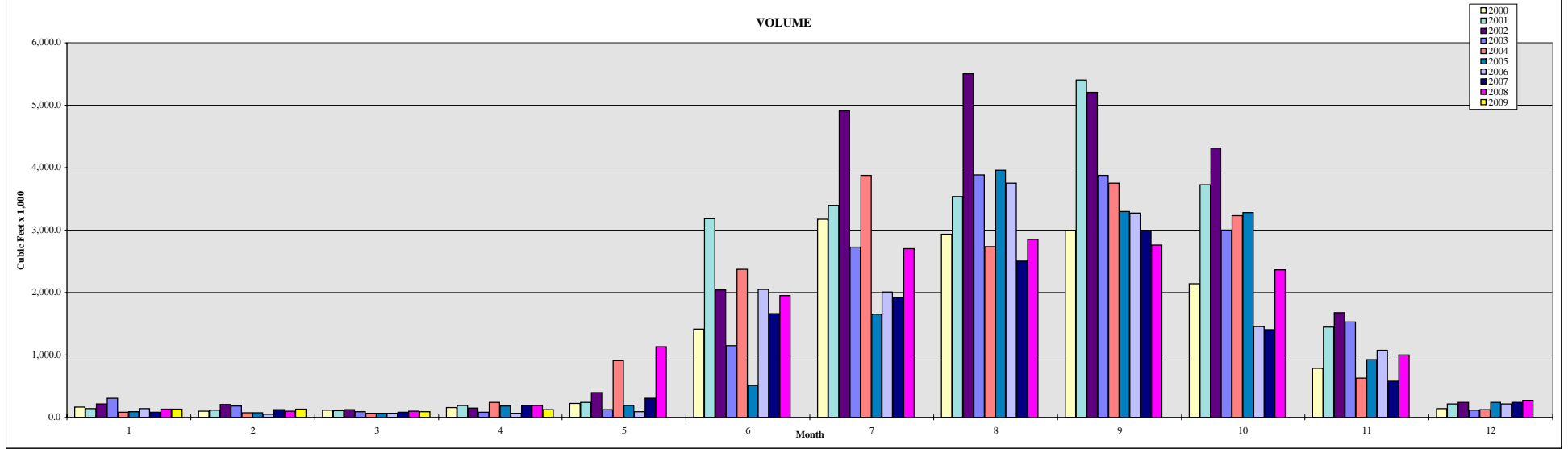
**BANGOR TREATMENT PLANT CONSUMPTION: 1998 - 2007**

Month	Customers										Volume (x 1,000 cf)									Revenue										
	2000	2001	2002	2003	2004	2005	2006	2007	2008	2009	2000	2001	2002	2003	2004	2005	2006	2007	2008	2009	2000	2001	2002	2003	2004	2005	2006	2007	2008	2009
1	18	18	19	22	22	22	24	23	23	22	17.2	24.6	55.0	35.7	18.9	17.0	13.9	11.8	12.7	12.6	\$ 350	\$ 390	\$ 505	\$ 558	\$ 463	\$ 451	\$ 404	\$ 386	\$ 402	\$ 396
2	18	18	19	22	22	22	23	23	23	22	15.5	28.3	49.7	32.3	16.9	23.0	10.4	18.2	10.4	8.5	\$ 333	\$ 410	\$ 501	\$ 538	\$ 450	\$ 489	\$ 384	\$ 427	\$ 387	\$ 370
3	18	18	19	23	22	24	23	23	23	20	15.3	24.7	29.0	30.7	12.3	16.6	16.0	12.9	15.5	8.9	\$ 336	\$ 380	\$ 412	\$ 533	\$ 421	\$ 468	\$ 419	\$ 394	\$ 420	\$ 363
4	17	18	19	23	22	23	23	23	23	20	20.9	45.0	29.5	25.3	25.4	21.2	9.9	35.5	17.4	12.9	\$ 368	\$ 472	\$ 415	\$ 489	\$ 505	\$ 483	\$ 380	\$ 503	\$ 432	\$ 388
5	17	18	19	22	22	23	23	23	23		34.4	48.4	35.8	32.4	52.0	19.9	15.0	52.2	35.1		\$ 442	\$ 512	\$ 448	\$ 530	\$ 675	\$ 474	\$ 413	\$ 586	\$ 546	
6	18	18	19	21	22	23	24	23	23		63.4	80.1	94.2	70.9	76.2	54.3	54.6	90.6	62.7		\$ 602	\$ 670	\$ 704	\$ 766	\$ 781	\$ 688	\$ 662	\$ 754	\$ 699	
7	18	18	19	21	22	24	22	23	24		141.3	86.1	117.3	102.3	98.4	61.3	89.3	79.9	79.0		\$ 892	\$ 680	\$ 794	\$ 899	\$ 900	\$ 712	\$ 827	\$ 799	\$ 814	
8	18	18	19	21	22	24	23	23	22		99.0	105.1	140.5	166.1	99.4	94.5	103.7	116.7	96.4		\$ 707	\$ 713	\$ 854	\$ 1,086	\$ 895	\$ 858	\$ 878	\$ 948	\$ 855	
9	18	18	21	21	22	23	23	23	22		116.1	119.8	109.1	80.6	109.3	99.2	95.0	105.0	99.9		\$ 767	\$ 740	\$ 785	\$ 818	\$ 962	\$ 867	\$ 868	\$ 913	\$ 876	
10	18	18	20	22	22	23	24	23	22		69.5	84.1	99.4	79.7	77.6	67.2	61.8	46.0	61.2		\$ 598	\$ 633	\$ 743	\$ 795	\$ 797	\$ 723	\$ 712	\$ 615	\$ 699	
11	18	19	22	22	22	23	23	23	23		51.4	72.4	72.2	77.9	36.2	37.0	42.8	24.8	32.2		\$ 542	\$ 610	\$ 657	\$ 749	\$ 538	\$ 559	\$ 580	\$ 480	\$ 521	
12	18	19	21	22	22	23	23	23	22		34.6	35.7	31.8	22.9	21.5	20.7	16.3	14.2	10.7		\$ 449	\$ 446	\$ 445	\$ 489	\$ 480	\$ 456	\$ 415	\$ 411	\$ 384	
Averages	18	18	20	22	22	23	23	23	21		678.6	754.3	863.5	756.8	644.1	531.9	528.8	607.8	533.1	42.9	\$ 6,385	\$ 6,655	\$ 7,261	\$ 8,249	\$ 7,866	\$ 7,229	\$ 6,941	\$ 7,217	\$ 7,034	\$ 1,517
Totals																														



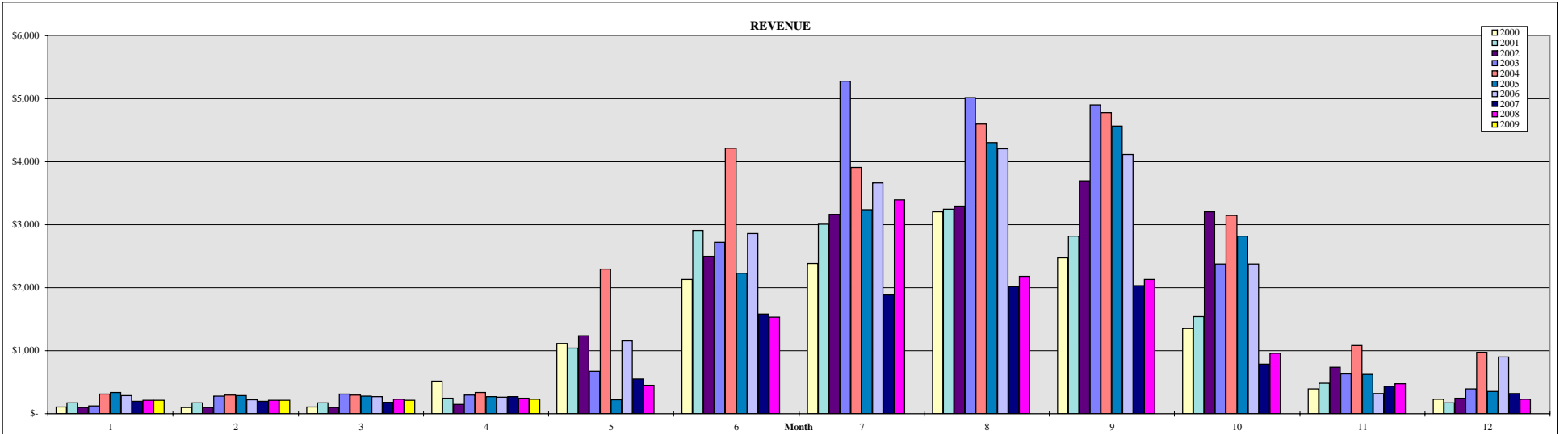
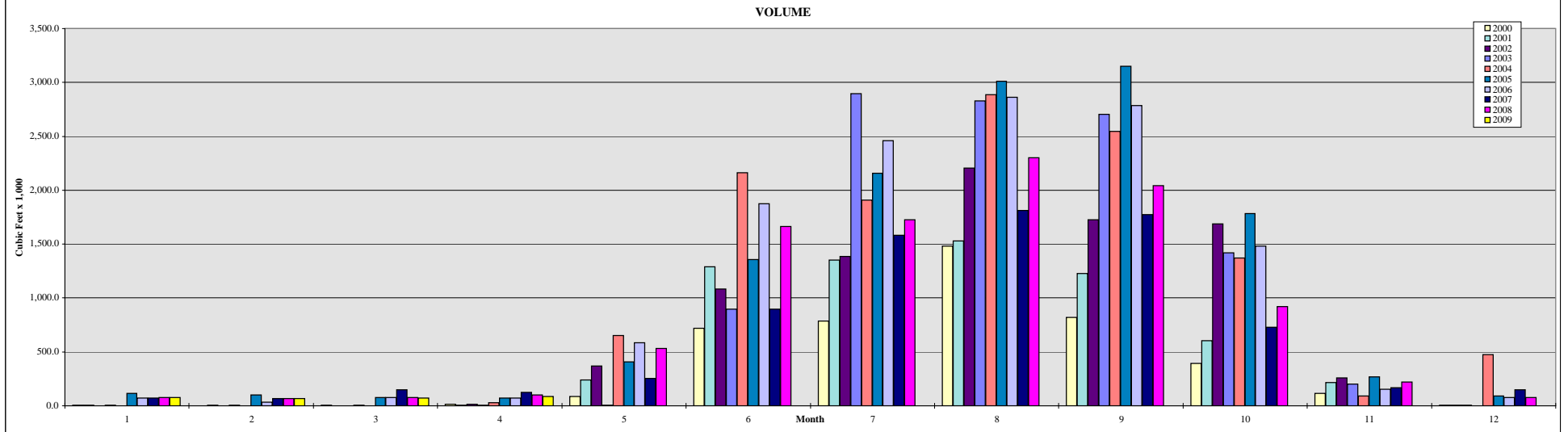
**COMMUNITY LINE WATER CONSUMPTION: 1998 - 2007**

Month	Customers										Volume (x 1,000 cf)									Revenue										
	2000	2001	2002	2003	2004	2005	2006	2007	2008	2009	2000	2001	2002	2003	2004	2005	2006	2007	2008	2009	2000	2001	2002	2003	2004	2005	2006	2007	2008	2009
1	58	59	65	63	61	60	65	65	66	66	165.7	141.7	211.6	305.8	84.9	89.8	136.5	80.9	130.0	135.7	\$ 809	\$ 794	\$ 933	\$ 1,417	\$ 1,155	\$ 1,142	\$ 1,278	\$ 1,207	\$ 1,289	\$ 1,295
2	57	58	65	59	61	59	64	63	64	65	101.9	119.0	209.2	183.8	70.9	74.9	47.5	127.8	102.3	130.6	\$ 732	\$ 761	\$ 930	\$ 913	\$ 1,141	\$ 1,110	\$ 1,165	\$ 1,234	\$ 1,225	\$ 1,272
3	57	58	65	62	59	59	64	65	66	65	116.4	105.4	125.7	89.9	65.3	68.3	67.8	82.6	100.0	91.9	\$ 747	\$ 747	\$ 844	\$ 1,166	\$ 1,100	\$ 1,103	\$ 1,190	\$ 1,211	\$ 1,258	\$ 1,232
4	58	58	65	61	60	59	64	66	65	66	158.0	186.3	150.0	85.9	238.9	179.2	67.6	189.3	193.1	126.7	\$ 793	\$ 830	\$ 868	\$ 1,154	\$ 1,296	\$ 1,217	\$ 1,190	\$ 1,344	\$ 1,336	\$ 1,274
5	58	63	66	62	64	62	67	66	67	67	227.0	236.7	399.7	125.1	908.6	189.2	86.9	308.7	1,132.6		\$ 872	\$ 911	\$ 1,138	\$ 1,214	\$ 2,056	\$ 1,280	\$ 1,262	\$ 1,473	\$ 2,308	
6	63	65	67	64	65	64	68	69	68	68	1,410.4	3,185.5	2,045.4	1,151.2	2,372.5	515.6	2,049.0	1,664.0	1,950.8		\$ 2,152	\$ 3,990	\$ 2,836	\$ 2,306	\$ 3,581	\$ 1,651	\$ 3,300	\$ 2,921	\$ 3,199	
7	66	65	69	65	67	64	67	68	68	68	3,171.5	3,395.3	4,911.0	2,729.9	3,873.0	1,652.2	2,004.9	1,917.6	2,700.7		\$ 3,972	\$ 4,212	\$ 5,815	\$ 3,949	\$ 5,162	\$ 2,822	\$ 3,238	\$ 3,165	\$ 3,972	
8	66	66	69	66	67	67	70	68	68	68	2,934.2	3,534.6	5,507.4	3,884.0	2,738.5	3,957.9	3,750.7	2,508.1	2,852.6		\$ 3,748	\$ 4,367	\$ 6,432	\$ 5,156	\$ 3,993	\$ 5,239	\$ 5,080	\$ 3,773	\$ 4,128	
9	66	67	69	66	67	67	69	69	68	68	2,991.5	5,401.0	5,209.8	3,874.6	3,752.9	3,300.4	3,273.6	2,988.4	2,757.6		\$ 3,807	\$ 6,300	\$ 6,125	\$ 5,146	\$ 5,038	\$ 4,572	\$ 4,579	\$ 4,265	\$ 4,030	
10	66	69	69	67	66	68	68	69	67	67	2,141.8	3,729.5	4,317.6	2,996.6	3,229.3	3,283.3	1,456.6	1,403.1	2,362.4		\$ 2,932	\$ 4,606	\$ 5,206	\$ 4,259	\$ 4,479	\$ 4,561	\$ 2,690	\$ 2,648	\$ 3,606	
11	65	68	67	64	62	68	69	69	68	68	788.1	1,448.6	1,680.5	1,531.5	625.5	923.8	1,077.1	582.2	1,003.6		\$ 1,526	\$ 2,236	\$ 2,468	\$ 2,697	\$ 1,729	\$ 2,142	\$ 2,317	\$ 1,807	\$ 2,224	
12	62	66	63	62	61	66	68	68	69	69	141.6	210.8	236.1	113.2	122.1	240.7	215.3	239.5	274.6		\$ 828	\$ 943	\$ 936	\$ 1,202	\$ 1,193	\$ 1,403	\$ 1,368	\$ 1,423	\$ 1,482	
	62	64	67	63	63	64	67	67	66	66	14,348.1	21,694.4	25,004.0	17,071.5	18,082.4	14,475.3	14,233.5	12,092.2	15,560.3	484.9	\$ 22,918	\$ 30,695	\$ 34,532	\$ 30,579	\$ 31,923	\$ 28,241	\$ 28,657	\$ 26,471	\$ 30,058	\$ 5,073
	Averages										Totals									Totals										



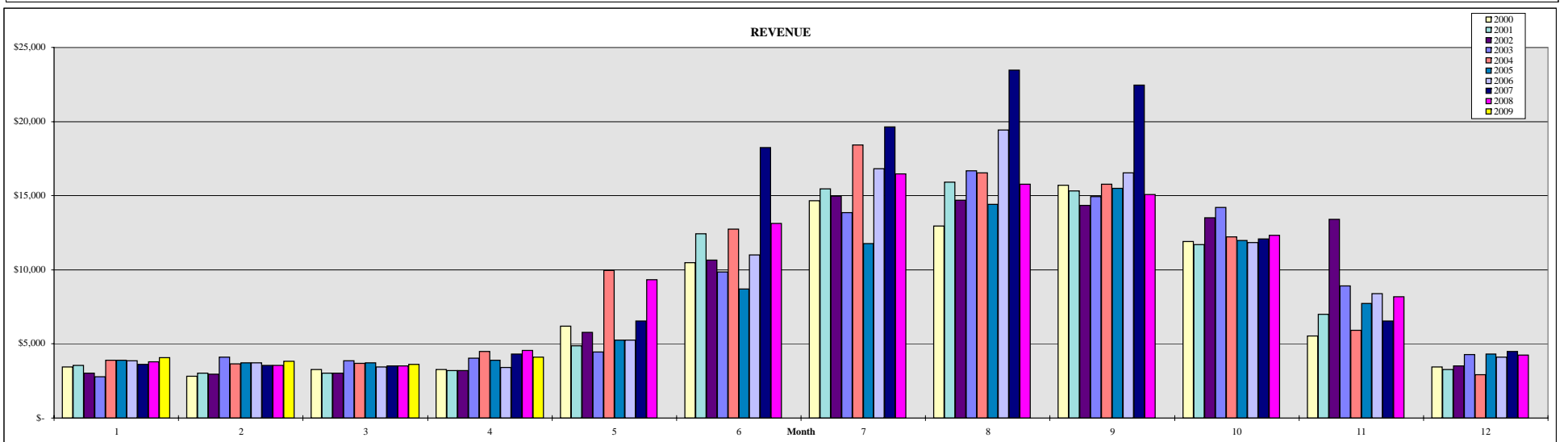
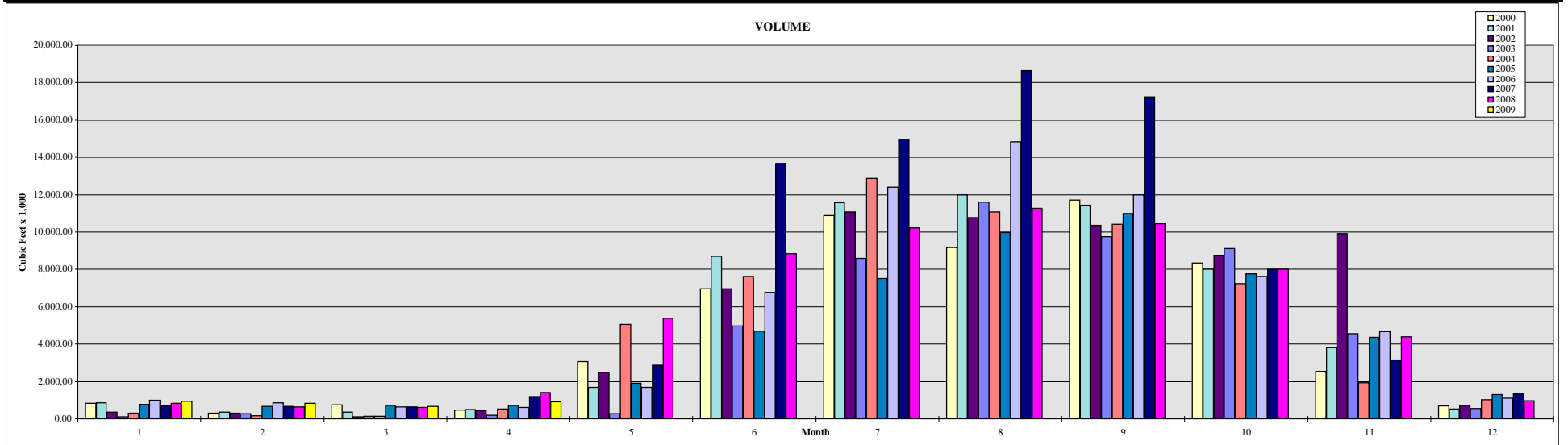
**FORBESTOWN DITCH WATER CONSUMPTION: 1998 - 2007**

Month	Customers										Volume (x 1,000 cf)									Revenue										
	2000	2001	2002	2003	2004	2005	2006	2007	2008	2009	2000	2001	2002	2003	2004	2005	2006	2007	2008	2009	2000	2001	2002	2003	2004	2005	2006	2007	2008	2009
1	5	7	5	7	10	14	11	6	7	7	4.5	2.4	1.7	4.3	1.7	115.5	74.2	73.7	74.6	76.5	\$ 105	\$ 169	\$ 102	\$ 127	\$ 312	\$ 335	\$ 284	\$ 196	\$ 215	\$ 217
2	5	5	5	8	9	12	10	6	7	7	2.3	2.4	1.7	3.1	0.8	99.2	34.5	66.5	66.5	67.3	\$ 102	\$ 168	\$ 102	\$ 278	\$ 293	\$ 290	\$ 222	\$ 196	\$ 214	\$ 214
3	5	7	5	9	9	11	10	5	8	20	2.8	1.9	2.1	2.7	0.4	74.8	74.3	149.4	74.4	73.9	\$ 103	\$ 169	\$ 102	\$ 313	\$ 293	\$ 280	\$ 267	\$ 179	\$ 232	\$ 214
4	13	9	7	9	10	10	10	7	7	7	15.1	4.3	14.6	2.5	26.8	72.8	71.4	123.0	101.9	88.3	\$ 513	\$ 244	\$ 151	\$ 295	\$ 338	\$ 268	\$ 266	\$ 267	\$ 245	\$ 231
5	24	24	27	15	37	23	26	14	13		87.3	240.6	368.8	5.5	650.7	409.5	583.1	253.4	531.3		\$ 1,119	\$ 1,040	\$ 1,241	\$ 673	\$ 2,292	\$ 222	\$ 1,157	\$ 552	\$ 454	
6	36	45	39	38	48	36	42	30	28		721.3	1,291.0	1,083.5	896.5	2,164.7	1,359.0	1,873.7	896.1	1,664.7		\$ 2,135	\$ 2,909	\$ 2,503	\$ 2,724	\$ 4,210	\$ 2,229	\$ 2,862	\$ 1,581	\$ 1,532	
7	46	47	50	50	51	47	49	36	30		784.7	1,350.7	1,387.3	2,898.2	1,907.3	2,157.2	2,459.6	1,583.2	1,725.4		\$ 2,387	\$ 3,012	\$ 3,162	\$ 5,276	\$ 3,907	\$ 3,241	\$ 3,667	\$ 1,888	\$ 3,393	
8	52	48	46	47	54	53	53	37	36		1,483.7	1,530.4	2,207.7	2,829.6	2,885.7	3,009.0	2,863.3	1,810.4	2,299.0		\$ 3,205	\$ 3,243	\$ 3,299	\$ 5,013	\$ 4,597	\$ 4,301	\$ 4,205	\$ 2,014	\$ 2,178	
9	46	46	53	48	56	54	52	37	36		817.6	1,226.4	1,726.4	2,705.8	2,544.3	3,150.0	2,784.4	1,772.5	2,042.9		\$ 2,478	\$ 2,820	\$ 3,700	\$ 4,900	\$ 4,780	\$ 4,564	\$ 4,116	\$ 2,035	\$ 2,131	
10	38	42	41	29	44	43	44	20	20		392.3	606.2	1,688.6	1,419.9	1,370.4	1,785.5	1,480.9	726.4	918.5		\$ 1,352	\$ 1,543	\$ 3,202	\$ 2,374	\$ 3,147	\$ 2,817	\$ 2,373	\$ 784	\$ 962	
11	13	12	18	14	11	18	7	14	12		113.8	214.1	259.7	203.3	90.6	270.1	154.4	168.2	222.7		\$ 395	\$ 488	\$ 737	\$ 634	\$ 1,081	\$ 620	\$ 317	\$ 436	\$ 475	
12	5	5	10	12	22	14	8	8	8		6.5	4.4	3.7	2.1	474.9	89.5	74.6	148.3	75.4		\$ 230	\$ 170	\$ 249	\$ 392	\$ 973	\$ 353	\$ 904	\$ 316	\$ 233	
	40	42	43	38	48	43	44	29	27	#DIV/0!	4,431.9	6,474.8	8,745.8	10,973.5	12,118.3	12,592.1	12,528.4	7,771.2	9,797.4	306.0	\$ 14,125	\$ 15,974	\$ 18,548	\$ 23,001	\$ 26,221	\$ 19,520	\$ 20,641	\$ 10,445	\$ 12,264	\$ 876
	Averages										Totals									Totals										



**BANGOR DITCH WATER CONSUMPTION: 1998 - 2007**

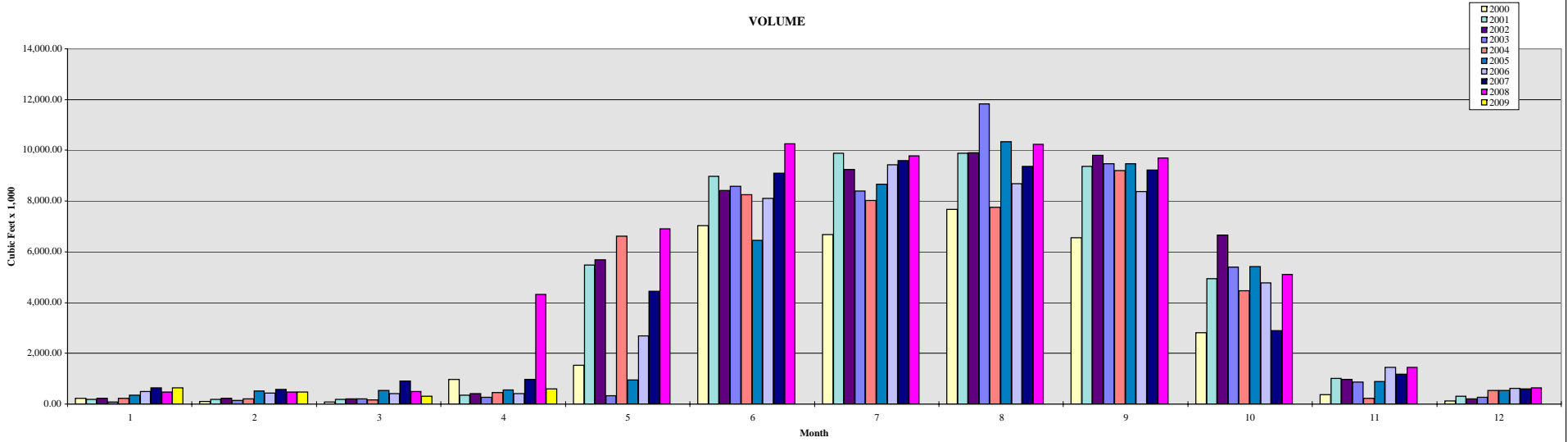
Month	Customers										Volume (x 1,000 cf)									Revenue										
	2000	2001	2002	2003	2004	2005	2006	2007	2008	2009	2000	2001	2002	2003	2004	2005	2006	2007	2008	2009	2000	2001	2002	2003	2004	2005	2006	2007	2008	2009
1	156	166	169	153	166	183	157	159	163	173	837.44	859.72	346.08	117.70	298.02	783.28	999.46	724.20	842.00	948.91	\$ 3,435	\$ 3,568	\$ 3,026	\$ 2,781	\$ 3,888	\$ 3,896	\$ 3,866	\$ 3,620	\$ 3,806	\$ 4,086
2	153	143	168	171	164	163	155	157	158	164	303.18	361.76	293.68	266.06	154.00	663.21	844.31	669.71	631.89	818.69	\$ 2,803	\$ 3,020	\$ 2,961	\$ 4,122	\$ 3,650	\$ 3,729	\$ 3,730	\$ 3,556	\$ 3,541	\$ 3,835
3	153	163	168	169	164	163	153	160	160	164	754.78	372.62	97.02	133.18	132.34	720.10	643.28	645.28	620.43	674.56	\$ 3,264	\$ 3,033	\$ 3,018	\$ 3,860	\$ 3,682	\$ 3,741	\$ 3,441	\$ 3,513	\$ 3,525	\$ 3,637
4	160	165	174	168	178	170	152	171	173	179	461.80	487.16	431.74	187.56	522.04	708.38	605.38	1,176.41	1,402.61	909.53	\$ 3,265	\$ 3,206	\$ 3,219	\$ 4,034	\$ 4,479	\$ 3,904	\$ 3,400	\$ 4,332	\$ 4,559	\$ 4,102
5	179	191	204	184	212	187	192	198	213	3,072.74	1,674.56	2,480.72	288.72	5,044.56	1,915.86	1,689.26	2,877.85	5,377.98	\$ 6,184	\$ 4,883	\$ 5,786	\$ 4,464	\$ 9,950	\$ 5,274	\$ 5,263	\$ 6,556	\$ 9,335			
6	200	211	216	212	219	212	217	223	217	6,947.80	8,703.04	6,959.76	4,964.58	7,615.46	4,708.74	6,759.58	13,677.09	8,852.45	\$ 10,482	\$ 12,439	\$ 10,641	\$ 9,842	\$ 12,741	\$ 8,689	\$ 11,012	\$ 18,261	\$ 13,123			
7	210	216	223	220	241	219	218	227	230	10,891.28	11,582.04	11,067.80	8,588.32	12,886.23	7,522.74	12,410.45	14,958.77	10,229.44	\$ 14,675	\$ 15,467	\$ 14,963	\$ 13,871	\$ 18,402	\$ 11,780	\$ 16,807	\$ 19,641	\$ 16,476			
8	213	219	227	220	229	226	222	227	226	9,182.30	11,999.64	10,774.98	11,602.54	11,088.18	9,961.04	14,843.95	18,647.25	11,273.23	\$ 12,941	\$ 15,918	\$ 14,707	\$ 16,675	\$ 16,533	\$ 14,425	\$ 19,431	\$ 23,465	\$ 15,758			
9	221	220	226	221	226	223	225	227	235	11,723.20	11,423.02	10,348.92	9,755.90	10,421.12	10,981.46	11,988.86	17,226.77	10,452.92	\$ 15,704	\$ 15,307	\$ 14,357	\$ 14,926	\$ 15,787	\$ 15,496	\$ 16,535	\$ 22,473	\$ 15,090			
10	202	215	219	216	216	221	218	213	223	8,352.52	7,999.32	8,768.44	9,115.18	7,235.44	7,757.52	7,617.21	8,000.91	8,021.02	\$ 11,923	\$ 11,707	\$ 13,508	\$ 14,196	\$ 12,207	\$ 11,990	\$ 11,845	\$ 12,099	\$ 12,319			
11	182	195	199	196	182	185	196	183	204	2,553.02	3,808.04	9,929.70	4,545.10	1,943.22	4,363.88	4,658.00	3,146.31	4,399.09	\$ 5,548	\$ 6,995	\$ 13,400	\$ 8,930	\$ 5,912	\$ 7,743	\$ 8,379	\$ 6,562	\$ 8,184			
12	171	173	178	172	176	165	174	175	180	690.56	537.32	718.90	548.50	1,022.73	1,286.40	1,106.82	1,342.71	978.35	\$ 3,438	\$ 3,261	\$ 3,510	\$ 4,298	\$ 2,930	\$ 4,314	\$ 4,119	\$ 4,500	\$ 4,239			
<b>Averages</b>	183	190	198	192	198	193	190	193	199	170	55,770.62	59,808.24	62,217.74	50,113.34	58,363.33	51,372.61	64,166.58	83,093.25	63,081.42	3,351.69	\$ 93,662	\$ 98,806	\$ 103,095	\$ 102,000	\$ 110,160	\$ 94,980	\$ 107,827	\$ 128,578	\$ 109,955	\$ 15,659
	<b>Averages</b>										<b>Totals</b>									<b>Totals</b>										



**PALERMO DITCH WATER CONSUMPTION: 1998 - 2007**

Month	Customers										Volume (x 1,000 cf)									Revenue										
	2000	2001	2002	2003	2004	2005	2006	2007	2008	2009	2000	2001	2002	2003	2004	2005	2006	2007	2008	2009	2000	2001	2002	2003	2004	2005	2006	2007	2008	2009
1	70	70	78	56	75	71	71	80	80	80	236.90	189.36	220.22	84.60	219.66	342.90	491.02	636.15	467.73	638.54	\$ 1,465	\$ 1,380	\$ 1,491	\$ 1,067	\$ 1,945	\$ 1,548	\$ 1,811	\$ 2,124	\$ 1,898	\$ 2,100
2	67	70	76	73	72	68	69	79	76	78	97.27	187.48	230.52	148.02	208.66	519.50	426.59	586.00	466.70	474.43	\$ 1,384	\$ 1,370	\$ 1,435	\$ 1,746	\$ 1,881	\$ 1,828	\$ 1,728	\$ 2,095	\$ 1,860	\$ 1,932
3	67	68	76	74	72	68	70	79	76	70	75.67	180.76	197.06	206.80	169.64	546.35	420.94	916.98	486.41	308.81	\$ 1,330	\$ 1,296	\$ 1,412	\$ 1,825	\$ 1,839	\$ 1,824	\$ 1,714	\$ 2,043	\$ 1,866	\$ 1,539
4	81	73	86	76	72	68	69	89	150	79	965.60	354.76	417.56	275.42	444.95	549.72	422.94	973.82	4,331.96	593.43	\$ 2,982	\$ 1,600	\$ 1,766	\$ 1,976	\$ 2,126	\$ 1,838	\$ 1,689	\$ 2,636	\$ 7,122	\$ 1,991
5	103	157	175	86	185	88	125	159	174		1,527.22	5,476.48	5,682.40	323.98	6,617.18	941.42	2,695.41	4,445.04	6,901.03		\$ 3,498	\$ 7,980	\$ 8,465	\$ 2,336	\$ 10,754	\$ 2,606	\$ 5,056	\$ 7,460	\$ 10,203	
6	175	191	205	196	199	175	188	202	205		7,030.98	8,965.98	8,406.36	8,581.26	8,260.96	6,450.06	8,099.80	9,103.04	10,264.94		\$ 10,768	\$ 12,111	\$ 11,617	\$ 12,902	\$ 12,650	\$ 9,832	\$ 11,800	\$ 13,087	\$ 14,335	
7	189	199	204	214	198	202	200	204	219		6,678.91	9,891.16	9,241.96	8,396.05	8,020.61	8,669.57	9,433.97	9,592.59	9,783.62		\$ 10,991	\$ 13,104	\$ 11,704	\$ 13,069	\$ 12,389	\$ 12,637	\$ 13,723	\$ 13,612	\$ 14,055	
8	196	206	215	219	206	209	263	201	207		7,681.16	9,890.66	9,912.98	11,834.39	7,764.92	10,344.43	8,680.54	9,372.64	10,238.86		\$ 12,577	\$ 13,227	\$ 13,375	\$ 15,693	\$ 13,173	\$ 14,545	\$ 12,901	\$ 13,326	\$ 14,322	
9	182	200	212	217	196	201	190	205	219		6,562.26	9,364.84	9,801.94	9,473.72	9,199.26	9,462.04	8,377.17	9,218.87	9,706.46		\$ 10,717	\$ 12,663	\$ 13,247	\$ 14,330	\$ 13,699	\$ 13,495	\$ 12,098	\$ 13,235	\$ 13,975	
10	154	169	187	173	172	165	166	144	163		2,805.99	4,944.42	6,665.24	5,406.14	4,468.28	5,425.76	4,780.99	2,900.42	5,106.18		\$ 5,972	\$ 7,664	\$ 9,642	\$ 9,324	\$ 8,331	\$ 8,640	\$ 7,957	\$ 5,544	\$ 8,194	
11	79	98	142	102	79	91	109	109	112		382.40	1,019.00	963.32	862.74	227.80	883.35	1,438.40	1,168.79	1,441.04		\$ 1,802	\$ 2,517	\$ 2,799	\$ 3,130	\$ 2,024	\$ 2,587	\$ 3,465	\$ 3,128	\$ 3,498	
12	74	79	76	84	75	82	85	90			121.03	301.30	197.90	272.54	539.79	538.60	619.19	594.79	632.75		\$ 1,408	\$ 1,597	\$ 1,236	\$ 2,203	\$ 1,171	\$ 1,938	\$ 1,445	\$ 2,111	\$ 2,251	
Averages	120	132	144	131	133	123	134	136	148	77	34,165.39	50,766.20	51,937.46	45,865.66	46,141.72	44,673.70	45,886.96	49,509.13	59,827.69	2,015.21	\$ 64,893	\$ 76,508	\$ 78,188	\$ 79,600	\$ 81,984	\$ 73,318	\$ 75,386	\$ 80,401	\$ 93,579	\$ 7,562
	Averages										Totals									Totals										

**VOLUME**



**REVENUE**

