



SOUTH FEATHER WATER & POWER AGENCY

TO: Board of Directors

FROM: Kathy Zancanella, Power Division Manager

DATE: July 20, 2010

RE: General Information (regarding matters not scheduled on agenda)
7/27/10 Board of Directors Meeting

Operations

Attached is the Power Division Summary Report for the end of June 2010. Also attached are charts showing reservoir levels through July 19. The late spring storms and cool June weather helped keep the runoff going well into early July, and the water level at Little Grass Valley should remain high throughout the summer. Sly Creek Reservoir is dropping at a steady pace with energy production.

Maintenance Projects

Lake Haven Way Road Maintenance

Joe Gibson and Gary Daley finished grading the dirt- and gravel- surfaced Lake Haven Way, which provides access to a section of the Miners Ranch Canal, and subsequently hauled 158 tons of base rock and gravel to improve the condition of the lower portion of the road. One of the property owners along the road had arranged for an additional 145 tons of gravel to be hauled and spread on the upper part of the road. It should be several years before this road needs significant work done to it again, although the crews will continue to monitor its condition.

Sly Creek Dam Crest Modification

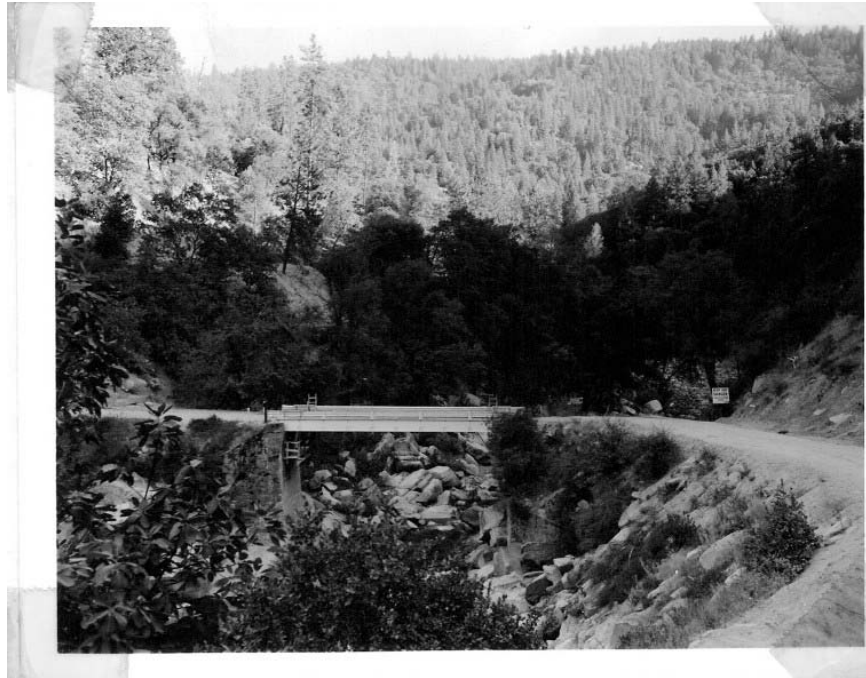
The Teichert Construction crew at Sly Creek Dam is working a five-day, ten-hour shift to make up for the delayed start on the project. They completed cutting back the slope near the spillway to improve the turning radius on the approach road, and were able to do so without blasting. They removed the top three feet of the crest of the dam and are treating the top foot of the dam material with cement to provide the appropriate compaction for the footings for the MSE wall. They have installed new culverts throughout the campground area and have begun to bring the road surface to near grade through the campground. As I did last month, I will share progress photos during the Board meeting.

General Information

History Lesson - South Fork Bridge at Ponderosa

Historian Robert Colby from Paradise contacted Steve Wong in early June with questions about a bridge across the South Fork Feather River at the current location of Ponderosa Dam, and Steve put me in touch with him. Mr. Colby has done research on Ponderosa Way, a WPA project, throughout the Sierra's and is writing an article about the bridges across the South and Middle Forks of the Feather River. He was interested in the disposition of the original bridge structure, as it was replaced by a temporarily relocated bridge during the construction. I sent him scanned copies of the photos and records from our files and he spent some time at our office on July 20.

As a side note, Lake Haven Way was once a section of Ponderosa Way on the south side of the South Fork of the Feather River, but became a dead-end road with the completion and filling of Oroville Reservoir.



No. 89 (9-24-60) - Ponderosa Dam site. Axis is beyond bridge across boulder and showing above right end of bridge.

PG&E Contract Update

On June 29, PG&E finally notified the Agency that the Interconnection Agreements had been signed. On July 2, the ISO posted on its system that the Power Purchase

Agreement Conversion was completed. On July 20, the Agency obtained access to the ISO meter data website in order to download the generation data necessary to prepare the July energy sales invoice to PG&E, although pricing data has not yet been made available.

Western Electricity Coordinating Council

The Agency was required to self-certify that it was in compliance with 27 NERC/WECC standards applicable to generator owners/operators for the period July 1, 2009 – June 30, 2010. This self-certification was completed online and submitted electronically on July 7, 2010.

North Yuba Water District

I have had a few conversations and have exchanged emails with the financial consultant who is seeking to secure financing for NYWD for the Forbestown Ditch pipeline project. He was provided with a spreadsheet that projects revenues and expenses through 2020 and had some questions about how the values were derived. At last week's NYWD Board meeting, General Manager Suppa advised the Board that they hoped to get grant funding for the environmental and permitting work associated with the project.

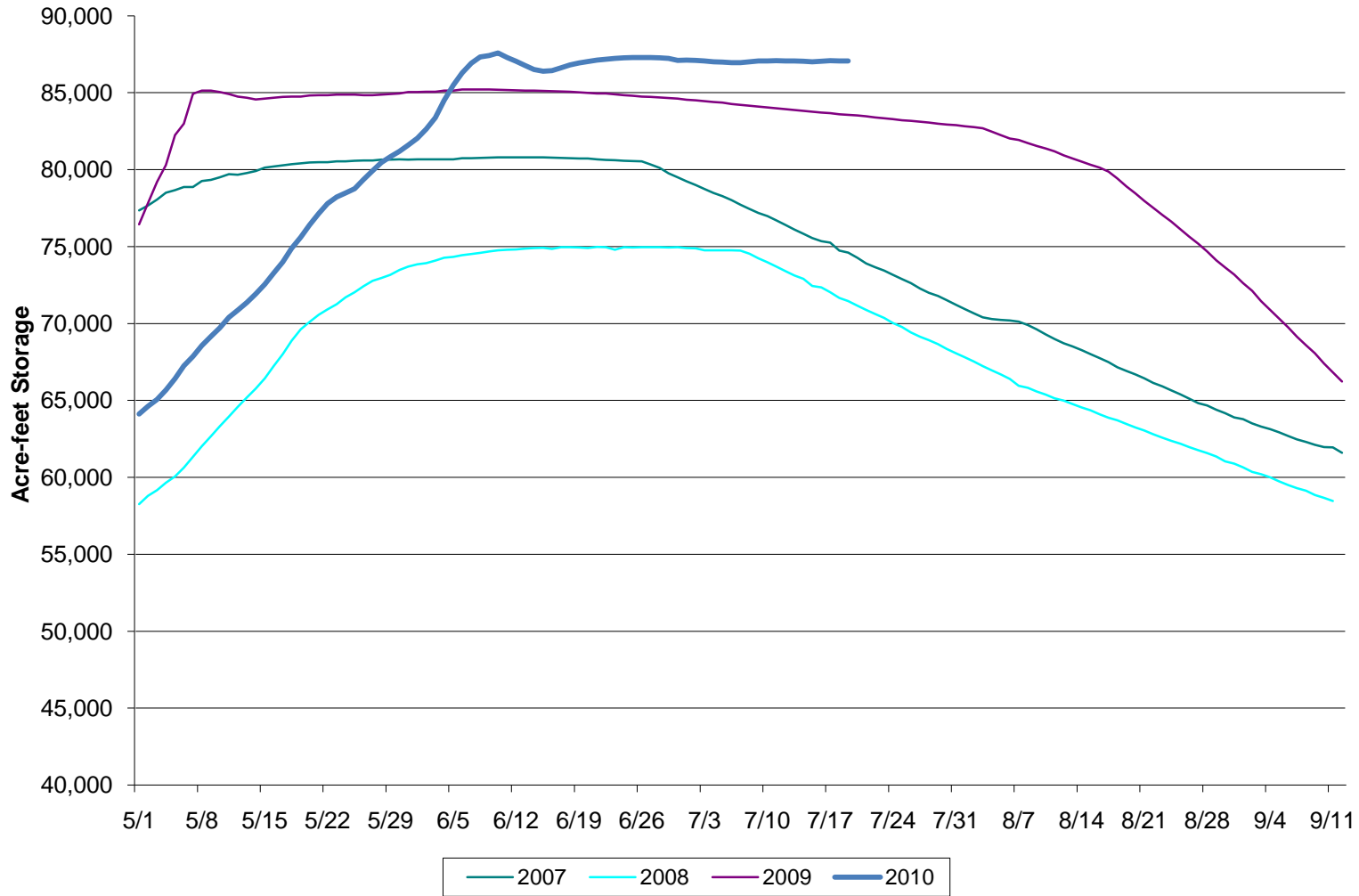
**SOUTH FEATHER WATER AND POWER
SOUTH FEATHER POWER PROJECT
2010
Reservoir and Stream Operations**

	RESERVOIR ELEVATIONS		STREAM RELEASES			
	Little Grass Valley	Sly Creek	Release to SFFR Below LGV	Release to SFFR Below Diversions	Release to Lost Creek	Release to Slate Creek
Maximum Elevation	5,046.00 Feet	3,524.00 Feet				
End of Month Conditions	Restriction from 5047.00 feet for PMF	Restriction from 3,530.00 feet for construction				
January	5,011.75 Feet	3,429.30 Feet	13.10 cfs	5.84 cfs	6.97 cfs	11.7 cfs
February	5,014.21 Feet	3,446.58 Feet	13.60 cfs	5.60 cfs	7.43 cfs	11.4 cfs
March	5,019.28 Feet	3,485.99 Feet	16.00 cfs	5.60 cfs	8.82 cfs	40 cfs
April	5,029.28 Feet	3,517.67 Feet	16.00 cfs	10.80 cfs	9.30 cfs	67.8 cfs
May	5,041.82 Feet	3,519.13 Feet	123.00 cfs	10.50 cfs	9.30 cfs	504 cfs
June	5,045.32 Feet	3,511.02 Feet	53.80 cfs	11.30 cfs	9.29 cfs	12.8 cfs
July	Feet	Feet	cfs	cfs	cfs	cfs
August	Feet	Feet	cfs	cfs	cfs	cfs
September	Feet	Feet	cfs	cfs	cfs	cfs
October	Feet	Feet	cfs	cfs	cfs	cfs
November	Feet	Feet	cfs	cfs	cfs	cfs
December	Feet	Feet	cfs	cfs	cfs	cfs

Powerhouse Operations

	Sly Creek	Woodleaf	Forbestown	Kelly Ridge
January	434,700 MWH	7,279,080 MWH	4,883,790 MWH	5,194,348 MWH
February	1,383,900 MWH	13,169,520 MWH	8,380,670 MWH	5,460,533 MWH
March	2,173,400 MWH	17,356,840 MWH	12,050,750 MWH	6,573,114 MWH
April	4,339,200 MWH	31,802,420 MWH	21,476,150 MWH	7,247,755 MWH
May	6,659,700 MWH	37,059,430 MWH	26,357,780 MWH	7,641,113 MWH
June	6,229,200 MWH	37,045,090 MWH	22,205,720 MWH	7,038,750 MWH
July	MWH	MWH	MWH	MWH
August	MWH	MWH	MWH	MWH
September	MWH	MWH	MWH	MWH
October	MWH	MWH	MWH	MWH
November	MWH	MWH	MWH	MWH
December	MWH	MWH	MWH	MWH
	21,220,100 MWH	143,712,380 MWH	95,354,860 MWH	39,155,613 MWH

Little Grass Valley Storage



Sly Creek Storage

