



## *SOUTH FEATHER WATER & POWER AGENCY*

---

**TO:** Board of Directors

**FROM:** Matt Colwell, Water Division Manager

**DATE:** July 21, 2010

**RE:** General Information (regarding matters not scheduled on agenda)  
7/27/10 Board of Directors Meeting

### **Water Distribution Operations**

Water Division staff have been accomplishing normal water system operation and maintenance tasks. Ongoing projects include irrigation and domestic distribution system betterments, new service installations, and leak repairs.

Progress on our new hydrography program continues to proceed and is anticipated to be complete by the end of August.

The Agency has received a \$10,000 deposit to prepare a Water Supply Assessment (WSA) report for the Rio Del Oro development east of highway 70 and south of Ophir Road, a planned development consisting of residential, commercial, school and open space. The WSA is required by law to address the adequacy of sufficient water supplies for large developments (500 dwelling units or larger) and will be used in the CEQA process. The ultimate (not in the recent future) water demand is estimated at approximately 2,500 dwelling units (homes) and will require the expansion of our Place-of-Use boundary, the addition of distribution mainline, and the completion of the treatment plant expansion.

### **The 2010 Irrigation flows are as follows:.**

<b>Forbestown Ditch</b>	<b>SF 14</b>	<b>= 21 cfs</b>
	<i>NYWD</i>	<i>= 9 cfs</i>
	<i>SFWPA</i>	<i>= 12 cfs</i>
<b>Bangor Canal</b>	<b>SF 25</b>	<b>= 14 cfs</b>
<b>Palermo Canal</b>		<b>= 13 cfs</b>

### **Water Treatment Operations**

A new wash water decant valve and actuator has been installed and is operational. (Picture at right)



The failed 200 hp pump #1 motor has been rewound and is reinstalled and operational.

Work on the MRTP expansion project including the filter pilot study, financing, fleshing out the issues for a progressive design/build construction phase, and filter replacement are proceeding.

The Filter #3 upgrade is producing significant improvements to operational parameters. The new filter is producing as much as a 26% increase in flow and run-time prior to having to backwash.

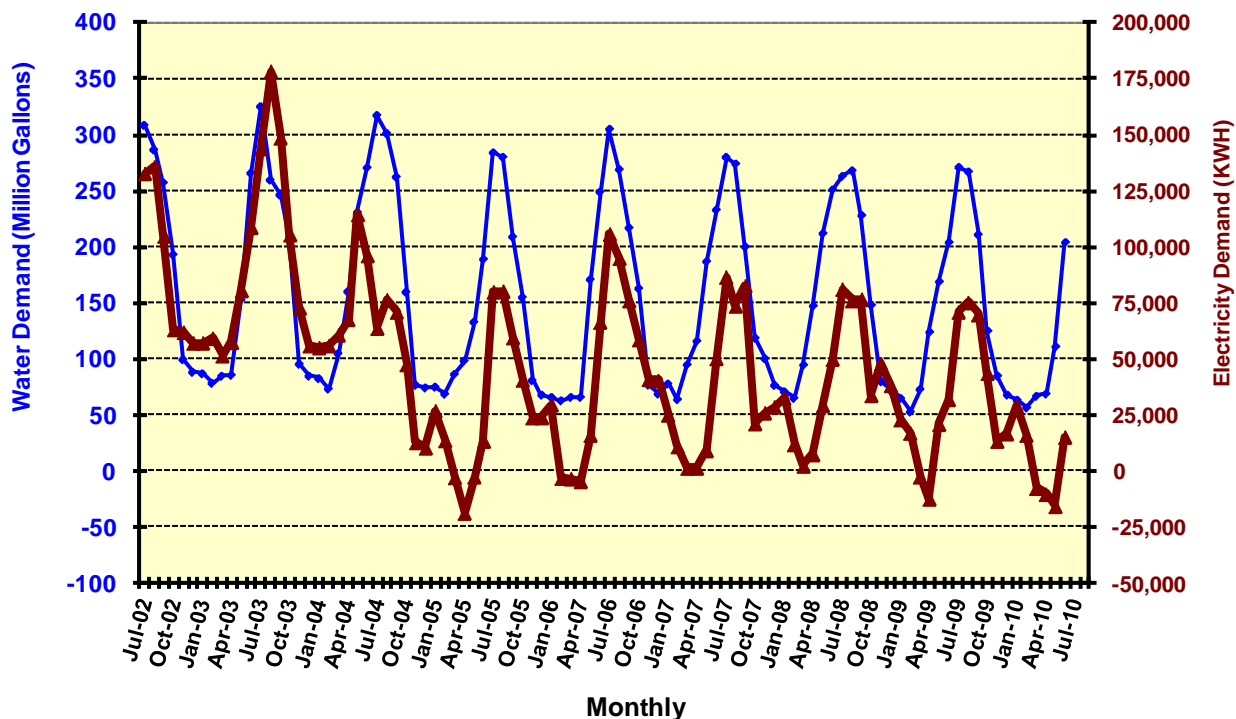
The Miners Ranch water treatment plant volumes for 2010 continue to run well below average as a result of, among other factors, wetter than normal spring precipitation. The June monthly volume is near 90% of the recent five-year average and the cumulative January-through-June volume is at 78% of the recent five-year average, and near the lowest of record (since 1981). The table below and the chart on the next page show a more historical perspective.

Miners Ranch Production	
June 2010	
Total	211.9 Million Gallons
High	9.6 MGD
Low	4.4 MGD
Avg.	7.1 MGD

### Solar Plant Production

The monthly MRTP power consumption was greater than the solar power production by 15,300 KWH during the month of June. The graph below provides a historical perspective of energy consumption compared to water production.

**Miners Ranch Water Treatment Plant  
Monthly Water Production VS: KWH Purchased**



# M RTP Total Annual Water Production

