



SOUTH FEATHER WATER & POWER

TO: Board of Directors

FROM: Matt Colwell, Water Division Manager

DATE: June 23, 2005

RE: General Information (regarding matters not scheduled on agenda)
6/28/05 Board of Directors Meeting

Distribution Operations

Water Division staff have been accomplishing distribution system maintenance and betterment projects including new office construction, service installations and leak repairs.

The more noteworthy activities for the past month include the completion of the **Foothill pipeline** project and the removal of the **Bangor Siphon Tower**. The figure at right and below shows Power and Water Division staff removing the Bangor Tower, which will improve irrigation operations, staff safety, and Agency liability.



Of special note is the discovery of a non-operating **36-inch clearwell inlet valve** that failed in the closed position that has considerably crippled the MRTTP operations. Staff is diligently excavating and identifying the potential solutions. The trenching/excavating conditions at depths of 13-15 feet below grade and 5 feet horizontally under the Temcor-cover footing in unstable soil have created difficult working conditions that are being well monitored by management and the ESCO. The valve-operation assembly has failed and will have to be modified and opened at the trench level. Staff is working overtime to accomplish this task. The figures at right indicate the magnitude of excavation and the identification of the failed valve operator. Please note the use of aluminum trench box protection provided by LOAPUD.



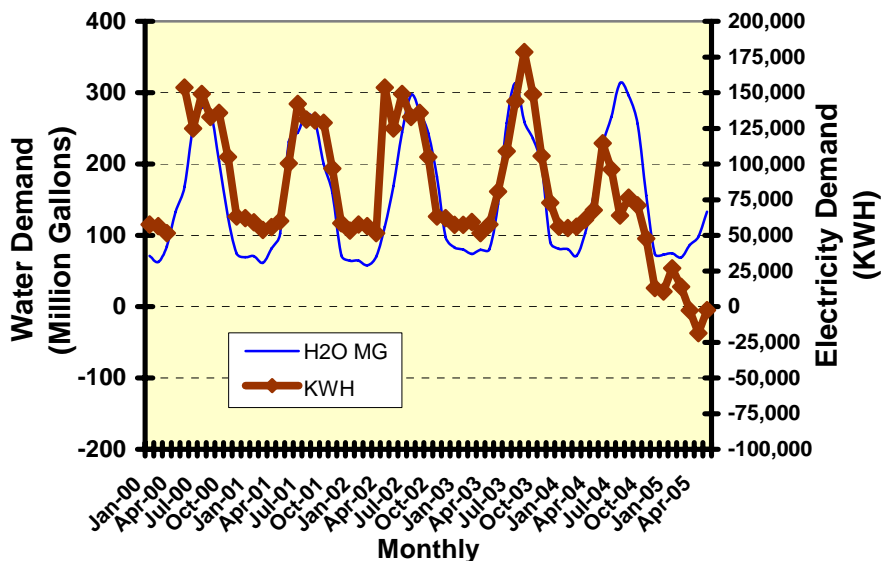
Leaks: During the month of May, six service line leaks and one main line leak were repaired. Nine new meters and backflow devices were installed.

Water Treatment Operations

Solar Plant Production: The attached graph provides a perspective of historical energy consumption compared to water production. Please note the May MRTTP energy demand has been exceeded and the solar plant *generated* 2,400 KWH (negative demand).

Water Plant

**Miners Ranch Water Treatment Plant
Monthly Water Production VS: KWH Purchased**



Production: Please reference attached water production graphs for historical perspective on 2005 treated water demand. All bacteriological requirements were met for the Miners Ranch Treatment Plant, Bangor Treatment Plant and Sly Creek Campground.

Miners Ranch May 2005	
Total	137.4 Million Gallons
High	7.5 MGD
Low	2.7 MGD
Avg.	4.4 MGD
Bangor	
Total	0.43 Million Gallons
High	0.03 MGD
Low	0.00 MGD
Avg.	0.02 MGD