



## ***SOUTH FEATHER WATER & POWER***

---

**TO:** Board of Directors

**FROM:** Kathy Petersen, Power Division Manager

**DATE:** September 21, 2005

**RE:** General Information (regarding matters not scheduled on agenda)  
9/27/05 Board of Directors Meeting

### **Operations**

Attached for your information is the Storage and Generation Report for August 2005. Also attached are charts showing the elevations of Little Grass Valley and Sly Creek reservoirs. Both reservoirs ended the summer recreation season with higher water levels than they have had the past few years. The draft from Little Grass Valley is currently set at 250 cfs.

### Little Grass Valley Dam Reach Whitewater Boating-Flow Study

From September 9 - 11 we provided flows from Little Grass Valley Dam in order for the relicensing consulting team and a group of expert kayakers to conduct a boating-flow study for relicensing. The flows were about 180, 400 and 300 cfs on subsequent days. The boaters considered 180 cfs to be the lowest boatable flow, while the higher flows were considered more enjoyable. While only three of the eleven boaters completed the trip all three days of the study, no serious injuries occurred. The boaters who participated enjoyed their experience and commented on the unique quality and scenery of the South Fork Feather River



Photo courtesy of Eric Petlock

canyon. I am including two photos taken by Eric Petlock of Oroville, who helped organize the boating team for the study.

## Maintenance Projects

### Slate Creek Excavation Work

As I reported last month, we received approval to mechanically remove up to 500 cubic yards of material from Slate Creek Diversion. A joint Power Division and Water Division crew completed the project on September 8. There was still quite a bit of flow in Slate Creek, unusual for this time of year, which presented challenges for managing turbidity. However, the crew took measures to minimize the turbidity that was released downstream by pumping the water back upstream to recirculate it through the gravel. A representative from the State Water Resources Control Board visited the site and was satisfied with the measures that were being taken.



### Annual Outages

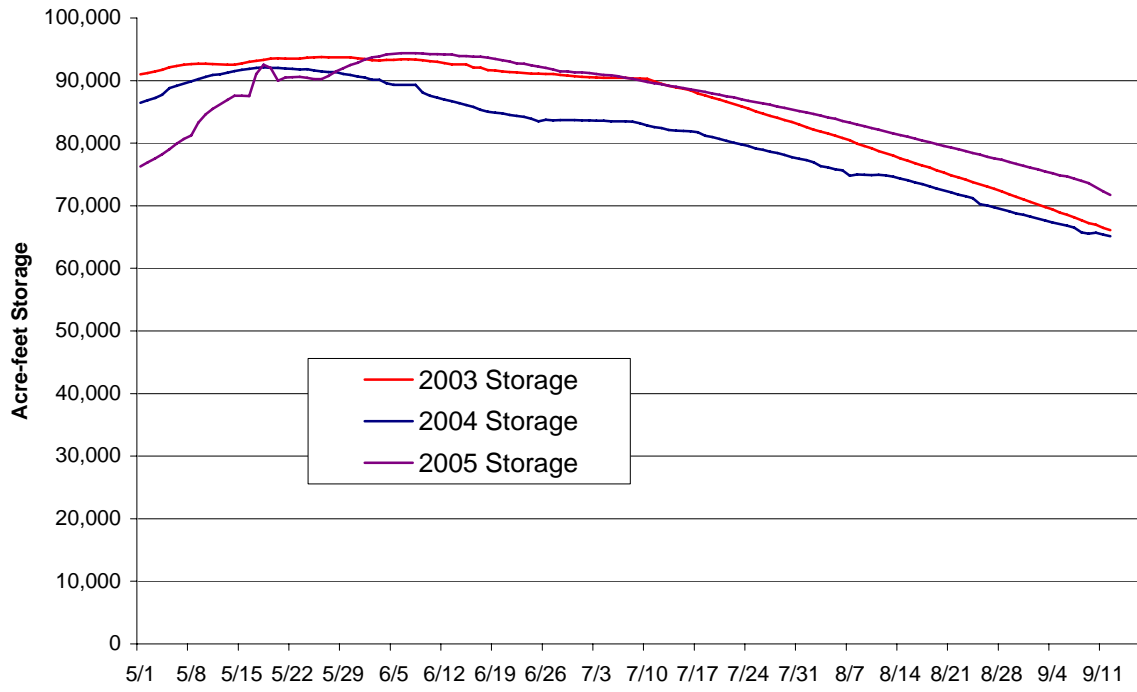
The fall outage season has begun. Kelly Ridge Powerhouse and Miners Ranch Conduit were shut down on September 19 and will be returned to service on the 30<sup>th</sup>. A Water Division crew is assisting with the canal outage, especially with the cleaning and patching tasks.

## General Information

### Ongoing Evaluations of Lost Creek Dam

The DMJM+HARRIS team will be returning to conduct a follow-up to the laser scan performed on Lost Creek Dam last December. During the weekend of September 24-25 they plan to scan the upstream face of the dam. They will be doing as-built scans of Sly Creek and Ponderosa dams as well. On September 26 they will begin evaluating the downstream face of Lost Creek Dam using non-destructive testing methods while suspended by ropes over the face of the dam.

### Little Grass Valley Storage



### Sly Creek Storage

