



SOUTH FEATHER WATER & POWER

TO: Board of Directors

FROM: Matt Colwell, Water Division Manager

DATE: November 16, 2005

RE: General Information (regarding matters not scheduled on the agenda)
11/22/05 Board of Directors Meeting

Distribution Operations

Water Division staff has recently completed two major projects that have significantly improved water storage, quality, and distribution in our system. The inside coating of the newly expanded clear-well storage facility has been successfully applied. The photos below and right show the application of a rubberized coating to preserve the concrete and to maintain water quality. This project has increased storage at MRTP of finished water by as much as 300,000 gallons. In addition to all staff involved, I would like to specifically recognize the planning and safety efforts by Jim Coffelt and Tom Venus. Their conscientiousness to details made this project run smoothly in a safe manner. Please notice that I did not include comfortable as a description of the process.

Water Division staff also installed the valving system to the 1 MG Kelly Ridge tank new 12-inch outlet/inlet. This additional capacity will reduce flow constrictions experienced at the 1 MGT facilities and improve water distribution in the high demand periods (Summer).

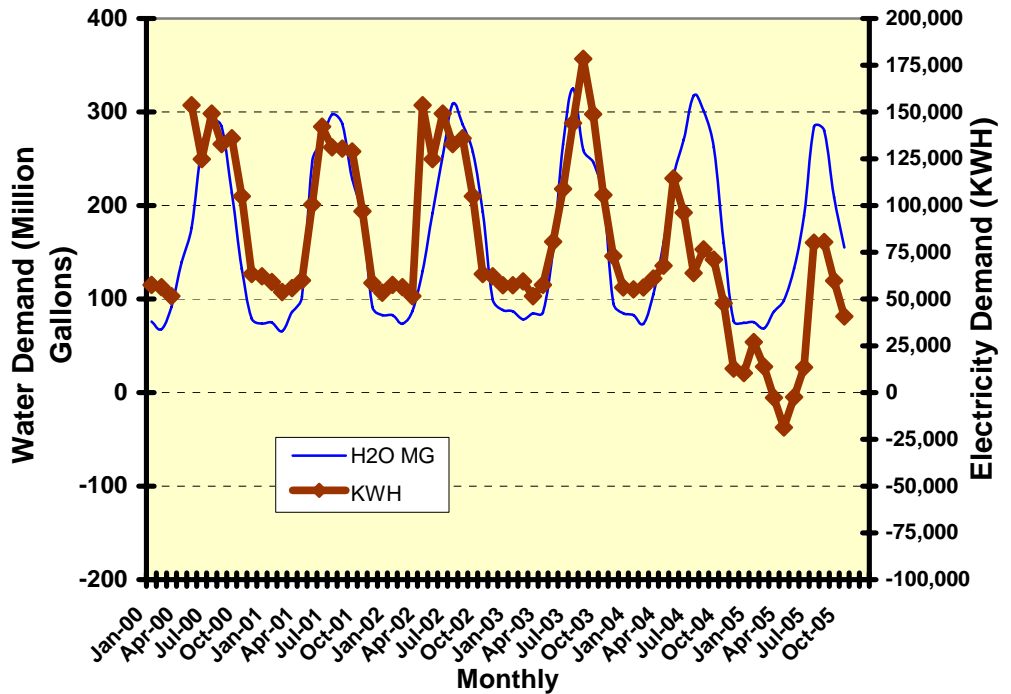
New Services and Leaks: In the month of October, Ten new meters and backflow devices were installed. Eleven service line leaks were repaired (no mainline leaks).

Water Treatment Operations

Solar Plant

Production: The attached graph below provides a perspective of historical energy consumption compared to water production. Please note that the October MRTTP energy demand has exceeded and the solar plant production by 40,8700 KWH. At last months Board Meeting Director Cecchi inquired as to when we will start generating instead of consuming in order to zero out our bill. I think the key point that should have been expressed is the timing of the generation compared to KWH consumption. We may not be generating enough to balance out a zero KWH consumption however our solar on-peak generation compared to our off-peak pumping consumption should result in a near zero bill. I will gladly discuss any addition questions.

**Miners Ranch Water Treatment Plant
Monthly Water Production VS: KWH Purchased**

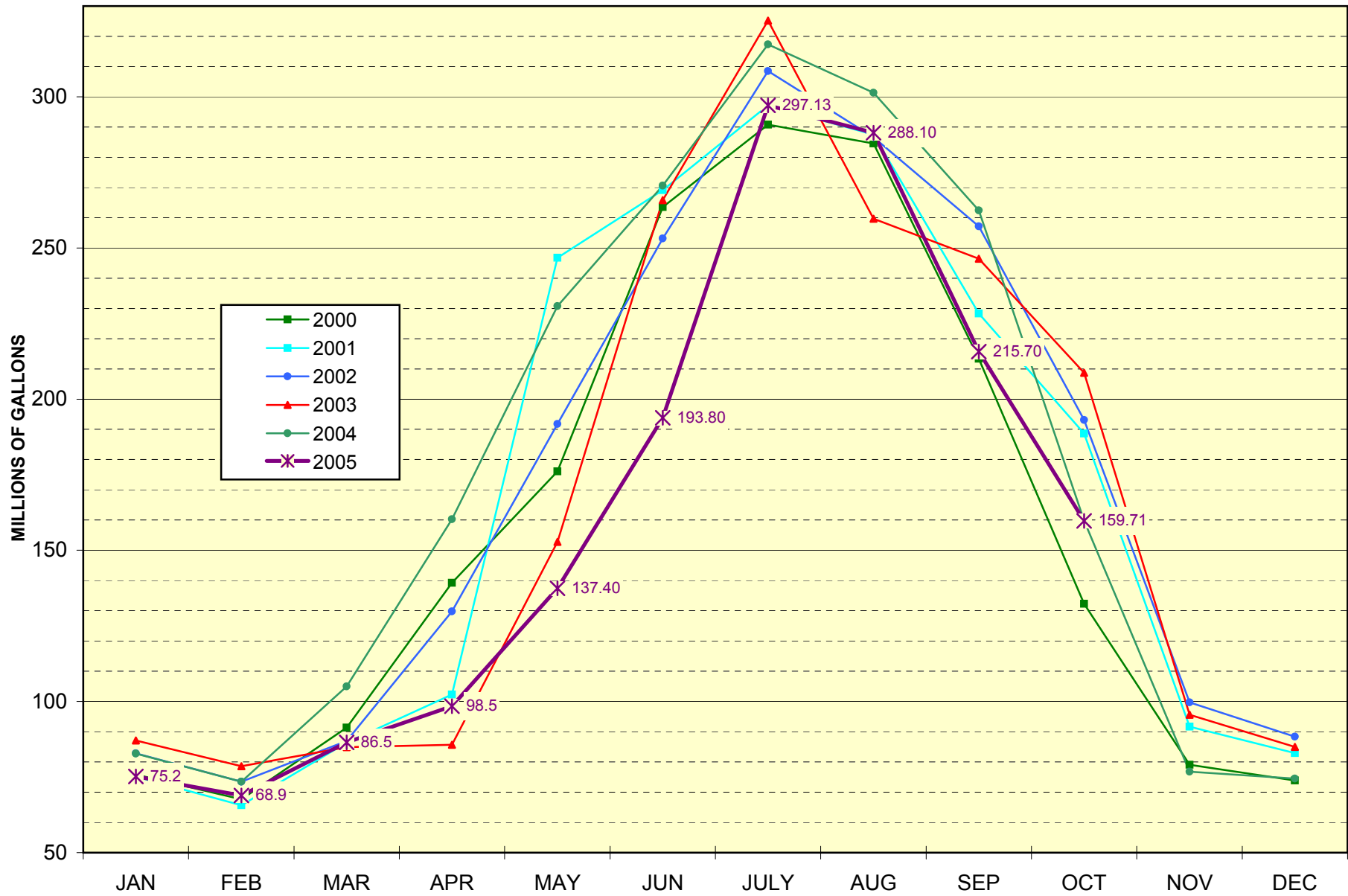


Water Plant Production: the MRTTP production (system demand) for October is slightly below average for the recent 5-year period. The 2005 cumulative production through October is 88 percent of average. Please reference attached water production graphs for historical perspective on 2005 treated water demand.

Miners Ranch		October 2005	
Total		159.7 Million Gallons	
High		6.6 MGD	
Low		2.8 MGD	
Avg.		5.2 MGD	
Bangor			
Total		0.45 Million Gallons	
High		0.04 MGD	
Low		0.00 MGD	
Avg.		0.02 MGD	

Bacteriological requirements were met for the Miners Ranch Treatment Plant, Bangor Treatment Plant, and Sly Creek Campground.

M RTP WATER PRODUCTION



BANGOR TREATMENT PLANT WATER PRODUCTION

