



SOUTH FEATHER WATER & POWER

TO: Board of Directors

FROM: Jenny Jellison, Finance Division Manager

DATE: December 20, 2005

RE: General Information (regarding matters not scheduled on the agenda)
12/27/05 Board of Directors Meeting

South Fork Relicensing Consulting Services

Devine, Tarbell and Associates, Inc. (DTA), consultant for the South Fork Project relicensing submitted its Monthly Activity Report for the period of October 31, 2005 through November 27, 2005 in the amount of \$86,702.03. The November invoice will be paid by December 31, 2005.

2006 Budget/Finance Committee Meeting

The Budget/Finance Committee met on December 14, 2005 to discuss the proposed 2006 Water Division budget. The format has changed since last year, so we spent a portion of the meeting going over the new format and explaining the process of getting to the new format. During the meeting we discussed various capital projects and the priority of those projects for the coming year. We also discussed the probability of a water sale in 2006, with Mike giving it a 60% chance of materializing. Due to the uncertainty involved in the water transfer process, we did not include any revenue from a water sale in the proposed 2006 budget.

Relicensing Report for YCWD

I sent the initial Relicensing Report to Yuba County Water District (YCWD) on November 23, 2005, ahead of the December 1 deadline specified in the May 2005 YCWD/SFWPA Agreement. The initial report included a detailed list of all project-to-date expenses through September 30, 2005. Going forward, we are required to provide this report on a quarterly basis per the agreement. I will continue to send all SFWPA directors a copy of the reports that are submitted to YCWD.

Financial Analysis Update

We continue our efforts to minimize all O&M expenditures as we near the end of 2005. As of November, our year-to-date domestic and irrigation water revenue is 93.8% of what it was in November of 2004. This is a 1.4% increase over our year-to-date position in October.

Our latest 2005 year-end projection is for total operating revenues to be approximately 85% of the budgeted amount. This projection excludes the sale of ID1 and all water system contributions made in 2005. Our projection is for total operating expenses to also be below the total budgeted amount. We expect to see our expenses at approximately 91% of the budgeted total.

2005 SUMMARY FINANCIAL REPORT
South Feather Water and Power Agency - Water Division
As of November 30, 2005

O&M SUMMARY						
Account Division	Description	Actual This Month	Year-to-Date			2005 ANNUAL BUDGET
			Actual	%	Remaining	
	O&M EXPENSES					
53000	WATER TREAT. PLANT	\$ 30,475	\$ 415,241	82.34%	\$ 89,063	\$ 504,305
54000	TRANS. & DIST. (T & D)	\$ 52,343	\$ 747,588	86.70%	\$ 114,639	\$ 862,226
55000	CUSTOMER ACCOUNT	\$ 19,711	\$ 224,351	55.49%	\$ 179,991	\$ 404,342
56000	GENERAL ADMIN.	\$ 168,388	\$ 1,711,696	90.41%	\$ 181,602	\$ 1,893,297
56000	GENERAL PLANT	\$ 14,626	\$ 252,005	76.30%	\$ 78,281	\$ 330,286
59000	NON-OPERATING	\$ 10,209	\$ 69,379	25.89%	\$ 198,621	\$ 268,000
51000	WATER SOURCE	\$ -	\$ 12,910	100.00%	\$ -	\$ 12,910
	TOTAL O&M EXPENSES	\$ 295,752	\$ 3,433,170	80.30%	\$ 842,197	\$ 4,275,367
	O&M REVENUE					
41000	WATER SALES	\$ 227,246	\$ 3,089,574	69.35%	\$ 1,365,787	\$ 4,455,361
42000	WATER SERVICE CHARGES	\$ 35,829	\$ 358,089	87.71%	\$ 50,177	\$ 408,266
49000	NON-OPERATING REVENUE	\$ 57,437	\$ 1,051,808	113.56%	\$ (125,598)	\$ 926,210
	TOTAL O&M REVENUE	\$ 320,512	\$ 4,499,471	77.71%	\$ 1,290,366	\$ 5,789,837
	O&M BALANCE:	\$ 24,760	\$ 1,066,302	70.41%	\$ 448,168	\$ 1,514,470
DEBT SERVICE						
Account Division	Description	Actual This Month	Year-to-Date			2005 ANNUAL BUDGET
			Actual	%	Remaining	
21413	EDA Loan Principal	\$ -	\$ 9,965	95.12%	\$ 511	\$ 10,476
21414	MRTP Principal	\$ -	\$ 80,000	94.12%	\$ 5,000	\$ 85,000
21415	'95 COP Principal	\$ -	\$ 545,000	93.97%	\$ 35,000	\$ 580,000
21419	'03 COP Principal	\$ -	\$ -	0.00%	\$ 140,069	\$ 140,069
59450	Interest, EDA Loan	\$ -	\$ 8,840	106.13%	\$ (511)	\$ 8,329
59570	Interest, MRTP Bonds	\$ -	\$ 96,500	104.32%	\$ (4,000)	\$ 92,500
59571	'95 COP Interest	\$ -	\$ 82,920	68.22%	\$ 38,630	\$ 121,550
59572	'03 COP Interest	\$ -	\$ 70,000		\$ (70,000)	\$ -
	TOTAL DEBT SERVICE	\$ -	\$ 893,225	86.06%	\$ 144,699	\$ 1,037,923

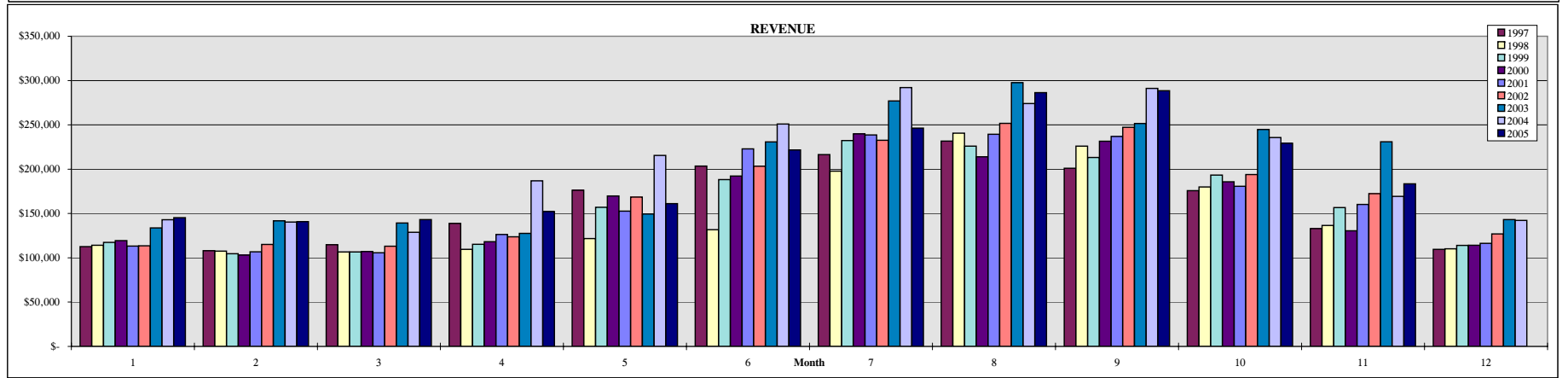
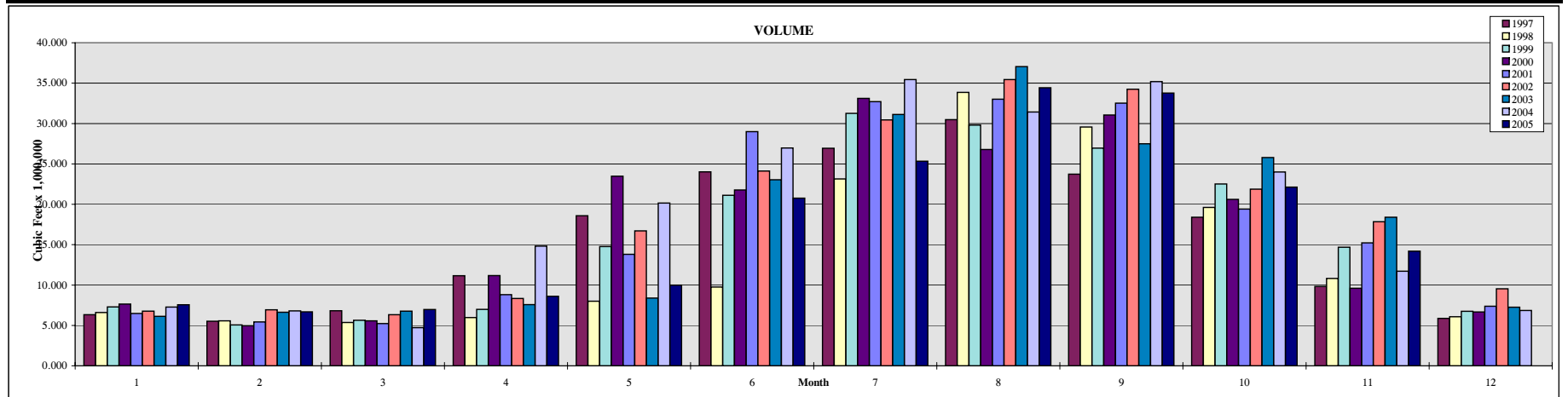
CAPITAL OUTLAY SUMMARY						
Account Division	Description	Actual This Month	Year-to-Date			2005 ANNUAL BUDGET
			Actual	%	Remaining	
	CAPITAL OUTLAY EXPENSES					
	Betterments	\$ 1,089	\$ 63,742	21.11%	\$ 238,158	\$ 301,900
	Distribution System Projects	\$ 3,512	\$ 16,857	60.42%	\$ 11,043	\$ 27,900
	Irrigation System Projects	\$ -	\$ 18,553	5.07%	\$ 347,047	\$ 365,600
	FERC Relicensing	\$ 15,547	\$ 821,883	130.21%	\$ (190,674)	\$631,209
	Office Remodel/Expansion Project	\$ 36,986	\$ 556,248			
	MRTTP Clearwell Cover	\$ 7,571	\$ 655,336			
	O&M Contingency Fund	\$ -	\$ -	0.00%	\$ 45,434	\$ 45,434
	TOTAL CAPITAL OUTLAY EXPENSES	\$ 64,705	\$ 2,132,619	160.76%	\$ (806,010)	\$1,326,609
	RESERVES TRANSFERRED TO FUND CAPITAL OUTLAY					
	System Capacity Charge Fund	\$0	\$603,000	2871.43%	\$ (582,000)	\$ 21,000
	2003 COP Proceeds - Residual	\$0	\$463,000	199.65%	\$ (231,097)	\$ 231,903
	FERC Relicensing Fund	\$289,876	\$1,285,528	203.66%	\$ (654,319)	\$ 631,209
	TOTAL RESERVES TRANSFERRED	\$289,876	\$2,351,528	265.98%	\$ (1,467,416)	\$ 884,112
	CAPITAL OUTLAY BALANCE:	\$ 225,171	\$ 218,909	-49.47%	\$ (661,406)	\$ (442,497)

	Balance This Month	Year-to-Date		2005 ANNUAL BUDGET
		Balance	Difference	
TOTAL BALANCE:	\$ 249,931	\$ 391,986	\$ (357,936)	\$ 34,050

RESERVE BALANCES	As of 12/31/2004	As of 11/30/2005	2005 Reserve Activity
General Fund	\$84,554	\$10,221	\$74,333
System Capacity Charges	\$1,482,717	\$900,334	\$582,383
South Fork Project FERC Relicensing Fund	\$1,787,374	\$692,112	\$1,095,262
Building Expansion / Reservoir Acquisition	\$237,170	\$297,130	(\$59,960)
TOTAL	\$3,591,815	\$1,899,797	\$1,692,018

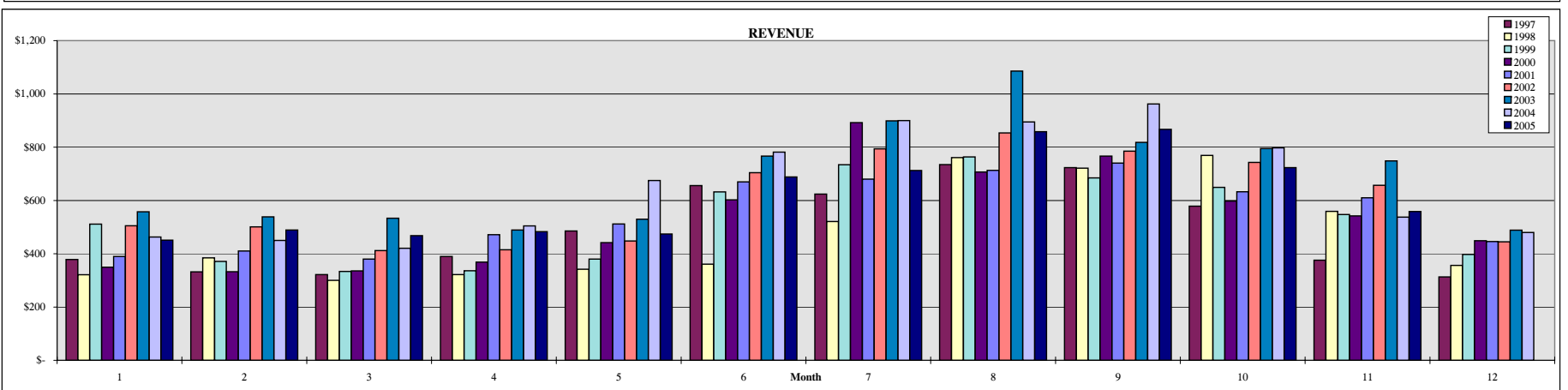
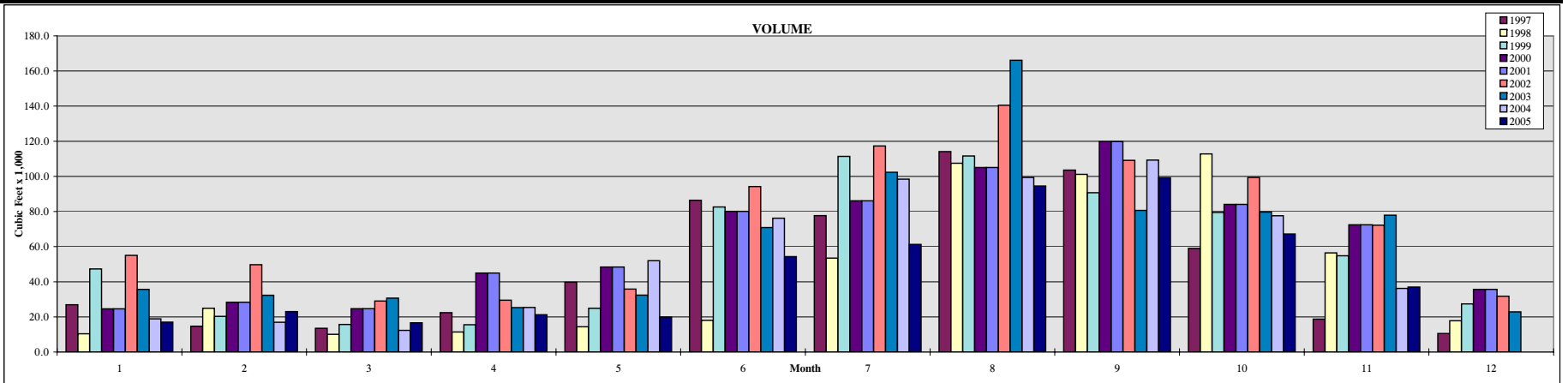
MINERS RANCH TREATMENT PLANT CONSUMPTION: 1997 - 2005

Month	Customers (Active)									Volume (x 1,000,000 cf)							Revenue										
	1997	1998	1999	2000	2001	2002	2003	2004	2005	1997	1998	1999	2000	2001	2002	2003	2004	2005	1997	1998	1999	2000	2001	2002	2003	2004	2005
	1	5,970	5,892	6,038	6,061	6,113	6,173	6,313	6,429	6,474	6,328	6,591	7,295	7,639	6,487	6,775	6,122	7,271	7,554	\$ 112,556	\$ 114,155	\$ 117,445	\$ 119,450	\$ 113,241	\$ 113,477	\$ 133,641	\$ 143,027
2	5,970	5,989	6,023	6,052	6,120	6,176	6,339	6,420	6,471	5,515	5,569	5,070	4,955	5,431	6,936	6,628	6,796	6,691	\$ 108,066	\$ 107,507	\$ 104,657	\$ 103,050	\$ 106,726	\$ 115,056	\$ 141,679	\$ 140,355	\$ 140,867
3	5,967	5,996	6,018	6,099	6,112	6,185	6,352	6,418	6,491	6,819	5,364	5,643	5,566	5,228	6,334	6,774	4,730	6,973	\$ 114,730	\$ 106,584	\$ 106,598	\$ 107,018	\$ 105,612	\$ 113,010	\$ 139,244	\$ 128,788	\$ 143,055
4	5,968	5,995	6,035	6,065	6,123	6,195	6,351	6,431	6,504	11,161	5,974	6,981	11,165	8,803	8,342	7,575	14,813	8,602	\$ 138,796	\$ 109,558	\$ 115,190	\$ 118,114	\$ 126,323	\$ 123,744	\$ 127,524	\$ 186,929	\$ 152,140
5	5,983	6,001	6,050	6,080	6,122	6,193	6,350	6,425	6,521	18,576	7,992	14,773	23,474	13,808	16,710	8,391	20,148	9,999	\$ 176,184	\$ 121,684	\$ 156,999	\$ 169,787	\$ 152,637	\$ 168,473	\$ 149,448	\$ 215,567	\$ 161,093
6	5,987	6,003	6,062	6,079	6,138	6,185	6,362	6,430	6,523	24,010	9,754	21,119	21,765	29,002	24,116	23,040	26,978	20,752	\$ 203,567	\$ 131,788	\$ 188,176	\$ 192,266	\$ 222,846	\$ 203,323	\$ 230,840	\$ 250,942	\$ 221,634
7	6,001	6,019	6,067	6,090	6,146	6,212	6,372	6,447	6,523	26,938	23,137	31,259	33,114	32,707	30,445	31,117	35,443	25,326	\$ 216,473	\$ 197,732	\$ 232,307	\$ 239,881	\$ 238,548	\$ 232,671	\$ 277,024	\$ 292,074	\$ 246,343
8	6,002	6,036	6,063	6,103	6,148	6,222	6,403	6,451	6,536	30,486	33,858	29,800	26,787	33,005	35,448	37,053	31,434	34,428	\$ 231,757	\$ 240,693	\$ 225,949	\$ 214,049	\$ 239,424	\$ 251,741	\$ 297,688	\$ 273,996	\$ 286,438
9	6,004	6,042	6,059	6,114	6,152	6,251	6,396	6,463	6,536	23,736	29,575	26,951	31,057	32,518	34,240	27,494	35,193	33,775	\$ 201,009	\$ 225,969	\$ 213,264	\$ 231,555	\$ 236,950	\$ 247,204	\$ 251,588	\$ 291,115	\$ 288,492
10	5,988	6,036	6,061	6,120	6,156	6,257	6,407	6,463	6,543	18,402	19,618	22,506	20,615	19,410	21,874	25,796	23,999	22,126	\$ 175,703	\$ 179,970	\$ 193,395	\$ 185,800	\$ 180,771	\$ 193,918	\$ 244,822	\$ 235,668	\$ 229,208
11	5,987	6,041	6,060	6,125	6,162	6,244	6,406	6,460	6,558	9,814	10,814	14,678	9,599	15,217	17,848	18,403	11,714	14,193	\$ 132,952	\$ 136,419	\$ 156,601	\$ 130,495	\$ 160,144	\$ 172,334	\$ 230,893	\$ 169,262	\$ 183,401
12	5,981	6,045	6,059	6,123	6,174	6,241	6,404	6,477	5,872	6,073	6,745	6,673	7,380	9,536	7,259	6,858	\$ 109,560	\$ 110,076	\$ 113,990	\$ 114,130	\$ 116,335	\$ 126,989	\$ 143,185	\$ 142,156			
	5,985	6,008	6,050	6,093	6,139	6,211	6,371	6,443	187,657	164,318	192,823	202,410	208,996	218,603	205,651	225,378	\$ 1,921,354	\$ 1,782,134	\$ 1,924,573	\$ 1,925,595	\$ 1,999,557	\$ 2,061,941	\$ 2,367,575	\$ 2,469,879			
	Averages									Totals							Totals										



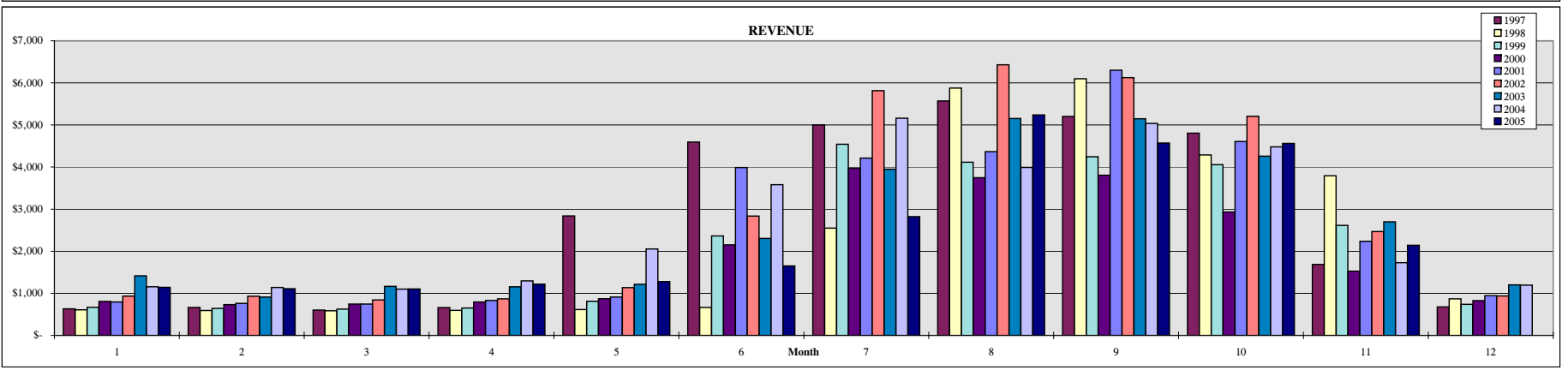
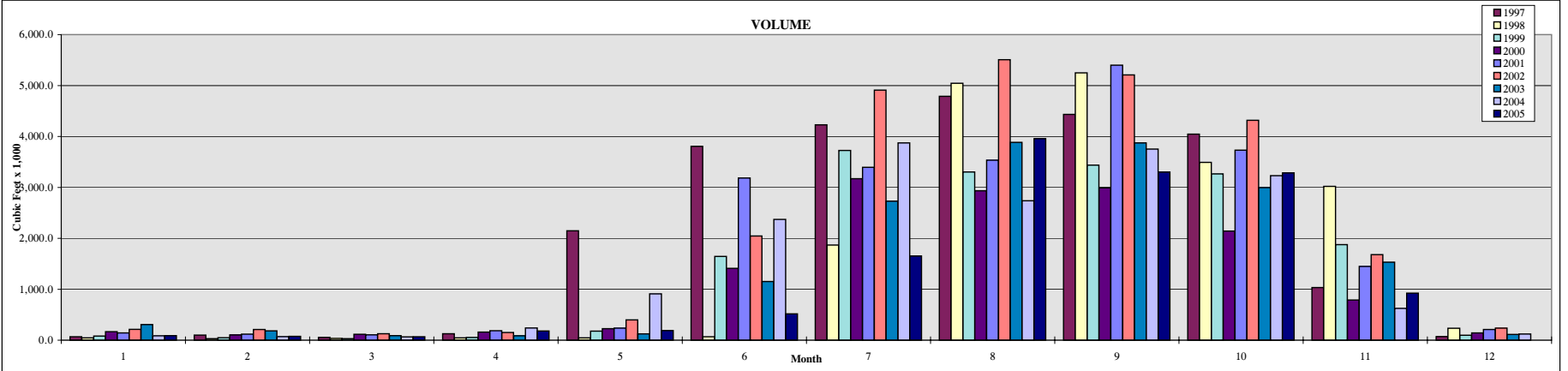
BANGOR TREATMENT PLANT CONSUMPTION: 1997 - 2005

Month	Customers (Active)									Volume (x 1,000 cf)								Revenue									
	1997	1998	1999	2000	2001	2002	2003	2004	2005	1997	1998	1999	2000	2001	2002	2003	2004	2005	1997	1998	1999	2000	2001	2002	2003	2004	2005
	1	20	20	19	18	18	19	22	22	22	26.9	10.4	47.3	24.6	24.6	55.0	35.7	18.9	17.0	\$ 378	\$ 321	\$ 511	\$ 350	\$ 390	\$ 505	\$ 558	\$ 463
2	20	20	19	18	18	19	22	22	22	14.7	24.9	20.3	28.3	28.3	49.7	32.3	16.9	23.0	\$ 332	\$ 385	\$ 371	\$ 333	\$ 410	\$ 501	\$ 538	\$ 450	\$ 489
3	20	20	18	18	18	19	23	22	24	13.5	10.1	15.7	24.7	24.7	29.0	30.7	12.3	16.6	\$ 322	\$ 300	\$ 334	\$ 336	\$ 380	\$ 412	\$ 533	\$ 421	\$ 468
4	21	19	19	17	18	19	23	22	23	22.4	11.4	15.5	45.0	45.0	29.5	25.3	25.4	21.2	\$ 390	\$ 322	\$ 336	\$ 368	\$ 472	\$ 415	\$ 489	\$ 505	\$ 483
5	21	19	19	17	18	19	22	22	23	39.7	14.4	24.9	48.4	48.4	35.8	32.4	52.0	19.9	\$ 485	\$ 342	\$ 380	\$ 442	\$ 512	\$ 448	\$ 530	\$ 675	\$ 474
6	20	19	19	18	18	19	21	22	23	86.4	18.0	82.6	80.1	80.1	94.2	70.9	76.2	54.3	\$ 656	\$ 361	\$ 632	\$ 602	\$ 670	\$ 704	\$ 766	\$ 781	\$ 688
7	19	20	19	18	18	19	21	22	24	77.7	53.5	111.4	86.1	86.1	117.3	102.3	98.4	61.3	\$ 624	\$ 521	\$ 734	\$ 892	\$ 680	\$ 794	\$ 899	\$ 900	\$ 712
8	19	20	18	18	18	19	21	22	24	114.1	107.5	111.6	105.1	105.1	140.5	166.1	99.4	94.5	\$ 734	\$ 761	\$ 763	\$ 707	\$ 713	\$ 854	\$ 1,086	\$ 895	\$ 858
9	19	19	18	18	18	21	21	22	23	103.6	101.2	90.7	119.8	119.8	109.1	80.6	109.3	99.2	\$ 723	\$ 721	\$ 685	\$ 767	\$ 740	\$ 785	\$ 818	\$ 962	\$ 867
10	20	20	18	18	18	20	22	22	23	59.0	112.8	79.5	84.1	84.1	99.4	79.7	77.6	67.2	\$ 579	\$ 769	\$ 649	\$ 598	\$ 633	\$ 743	\$ 795	\$ 797	\$ 723
11	20	19	18	18	19	22	22	22	23	18.7	56.4	54.8	72.4	72.4	72.2	77.9	36.2	37.0	\$ 376	\$ 559	\$ 547	\$ 542	\$ 610	\$ 657	\$ 749	\$ 538	\$ 559
12	20	19	18	18	19	21	22	22		10.5	17.8	27.4	35.7	35.7	31.8	22.9	21.5		\$ 313	\$ 356	\$ 397	\$ 449	\$ 446	\$ 445	\$ 489	\$ 480	
	20	20	19	18	18	20	22	22		587.2	538.4	681.7	754.3	754.3	863.5	756.8	644.1		\$ 5,912	\$ 5,719	\$ 6,340	\$ 6,385	\$ 6,655	\$ 7,261	\$ 8,249	\$ 7,866	\$ 6,773
	Averages									Totals								Totals									



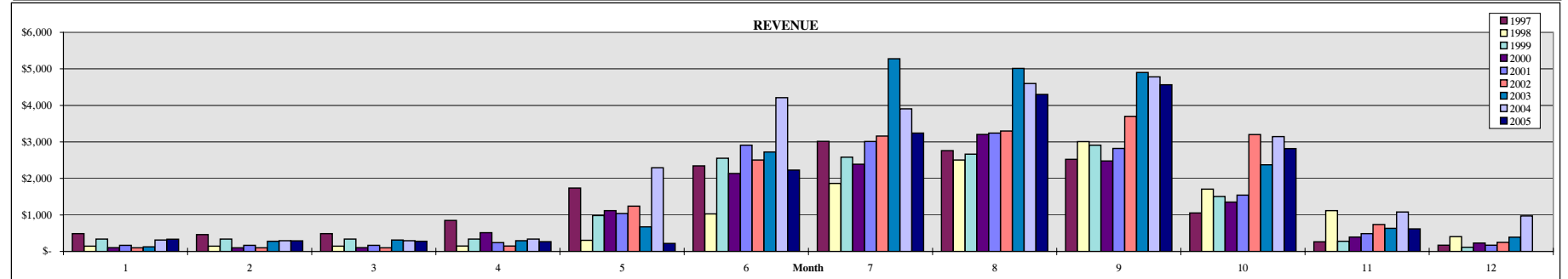
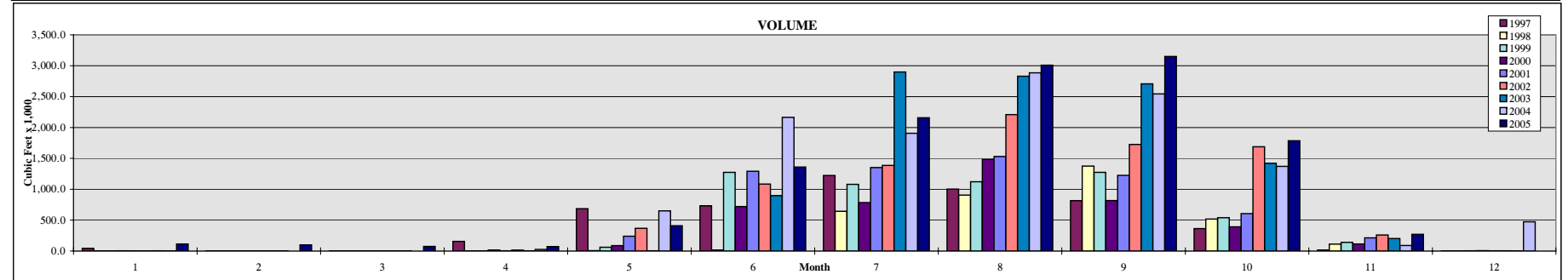
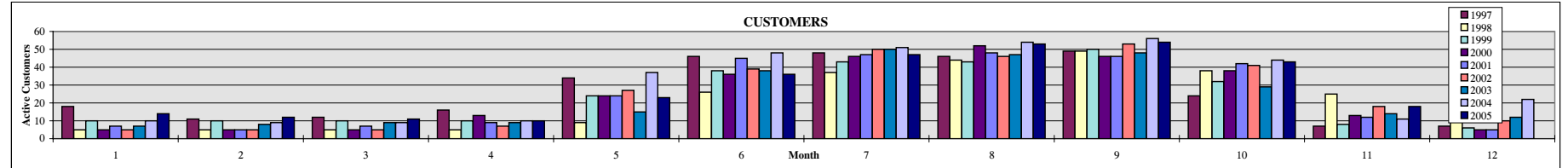
COMMUNITY LINE WATER CONSUMPTION: 1997 - 2005

Month	Customers (Active)										Volume (x 1,000 cf)										Revenue									
	1997	1998	1999	2000	2001	2002	2003	2004	2005	1997	1998	1999	2000	2001	2002	2003	2004	2005	1997	1998	1999	2000	2001	2002	2003	2004	2005			
1	51	51	53	58	59	65	63	61	60	68.3	46.5	80.4	165.7	141.7	211.6	305.8	84.9	89.8	\$ 631	\$ 609	\$ 668	\$ 809	\$ 794	\$ 933	\$ 1,417	\$ 1,155	\$ 1,142			
2	51	51	54	57	58	65	59	61	59	100.8	29.9	49.5	101.9	119.0	209.2	183.8	70.9	74.9	\$ 665	\$ 592	\$ 641	\$ 732	\$ 761	\$ 930	\$ 913	\$ 1,141	\$ 1,110			
3	50	50	54	57	58	65	62	59	59	52.8	34.2	29.0	116.4	105.4	125.7	89.9	65.3	68.3	\$ 603	\$ 585	\$ 624	\$ 747	\$ 747	\$ 844	\$ 1,166	\$ 1,100	\$ 1,103			
4	52	50	54	58	58	65	61	60	59	126.5	44.7	54.6	158.0	186.3	150.0	85.9	238.9	179.2	\$ 662	\$ 596	\$ 650	\$ 793	\$ 830	\$ 868	\$ 1,154	\$ 1,296	\$ 1,217			
5	58	52	57	58	63	66	62	64	62	2,147.8	44.6	177.5	227.0	236.7	399.7	125.1	908.6	189.2	\$ 2,838	\$ 616	\$ 810	\$ 872	\$ 911	\$ 1,138	\$ 1,214	\$ 2,056	\$ 1,280			
6	59	53	61	63	65	67	64	65	64	3,805.1	67.6	1,644.0	1,410.4	3,185.5	2,045.4	1,151.2	2,372.5	515.6	\$ 4,593	\$ 663	\$ 2,364	\$ 2,152	\$ 3,990	\$ 2,836	\$ 2,306	\$ 3,581	\$ 1,651			
7	58	59	64	66	65	69	65	67	64	4,228.5	1,867.8	3,726.3	3,171.5	3,395.3	4,911.0	2,729.9	3,873.0	1,652.2	\$ 5,002	\$ 2,550	\$ 4,542	\$ 4,212	\$ 3,972	\$ 5,815	\$ 3,949	\$ 5,162	\$ 2,822			
8	58	62	65	66	66	69	66	67	67	4,789.2	5,044.3	3,302.3	2,934.2	3,534.6	5,507.4	3,884.0	2,738.5	3,957.9	\$ 5,571	\$ 5,878	\$ 4,116	\$ 3,748	\$ 4,367	\$ 6,432	\$ 5,156	\$ 3,993	\$ 5,239			
9	58	63	64	66	67	69	66	67	67	4,432.7	5,248.8	3,438.5	2,991.5	5,401.0	5,209.8	3,874.6	3,752.9	3,300.4	\$ 5,204	\$ 6,099	\$ 4,246	\$ 3,807	\$ 6,300	\$ 6,125	\$ 5,146	\$ 5,038	\$ 4,572			
10	58	63	63	66	69	69	67	66	68	4,047.1	3,491.6	3,266.2	2,141.8	3,729.5	4,317.6	2,996.6	3,229.3	3,283.3	\$ 4,807	\$ 4,289	\$ 4,057	\$ 2,932	\$ 4,606	\$ 5,206	\$ 4,259	\$ 4,479	\$ 4,561			
11	58	63	62	65	68	67	64	62	68	1,032.8	3,020.6	1,876.5	788.1	1,448.6	1,680.5	1,531.5	625.5	923.8	\$ 1,685	\$ 3,791	\$ 2,615	\$ 1,526	\$ 2,236	\$ 2,468	\$ 2,697	\$ 1,729	\$ 2,142			
12	55	57	58	62	66	63	62	61		70.9	233.7	96.8	141.6	210.8	236.1	113.2	122.1		\$ 678	\$ 868	\$ 738	\$ 828	\$ 943	\$ 936	\$ 1,202	\$ 1,193				
	56	56	59	62	64	67	63	63		24,902.5	19,174.3	17,741.6	14,348.1	21,694.4	25,004.0	17,071.5	18,082.4	14,234.6	\$ 32,940	\$ 27,136	\$ 26,072	\$ 22,918	\$ 30,695	\$ 34,532	\$ 30,579	\$ 31,923				
	Averages										Totals										Totals									



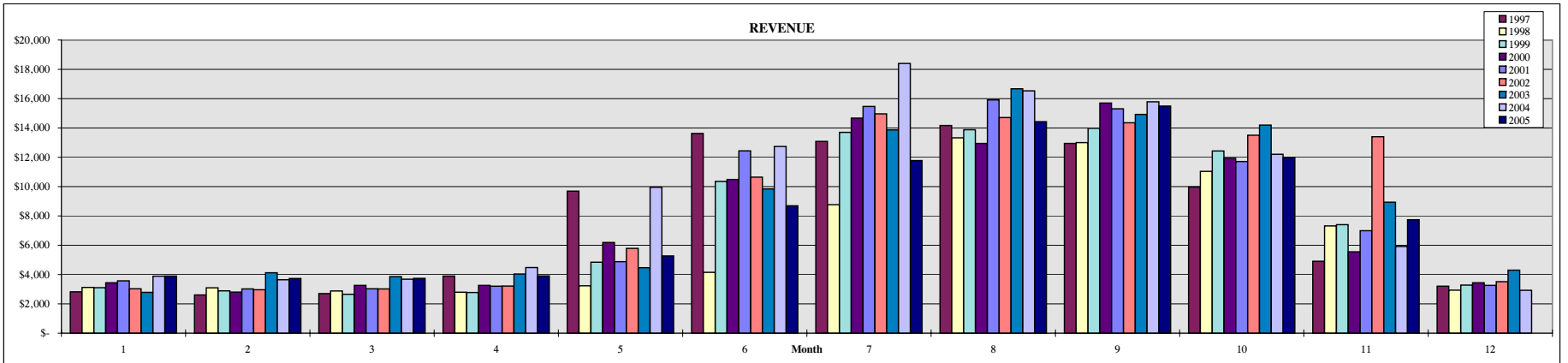
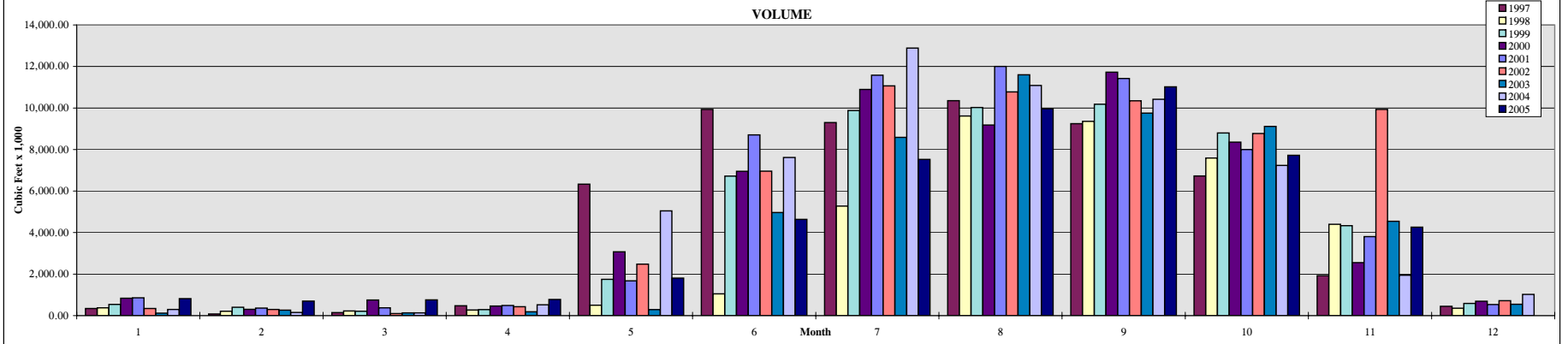
FORBESTOWN DITCH WATER CONSUMPTION: 1997 - 2005

Month	Customers (Active)									Volume (x 1,000 cf)									Revenue								
	1997	1998	1999	2000	2001	2002	2003	2004	2005	1997	1998	1999	2000	2001	2002	2003	2004	2005	1997	1998	1999	2000	2001	2002	2003	2004	2005
1	18	5	10	5	7	5	7	10	14	41.0	2.4	3.3	4.5	2.4	1.7	4.3	1.7	115.5	\$ 490	\$ 147	\$ 338	\$ 105	\$ 169	\$ 102	\$ 127	\$ 312	\$ 335
2	11	5	10	5	5	5	8	9	12	2.5	1.7	2.7	2.3	2.4	1.7	3.1	0.8	99.2	\$ 463	\$ 147	\$ 338	\$ 102	\$ 168	\$ 102	\$ 278	\$ 293	\$ 290
3	12	5	10	5	7	5	9	9	11	2.3	1.6	2.4	2.8	1.9	2.1	2.7	0.4	74.8	\$ 487	\$ 147	\$ 337	\$ 103	\$ 169	\$ 102	\$ 313	\$ 293	\$ 280
4	16	5	10	13	9	7	9	10	10	157.1	2.3	2.9	15.1	4.3	14.6	2.5	26.8	72.8	\$ 850	\$ 147	\$ 338	\$ 513	\$ 244	\$ 151	\$ 295	\$ 338	\$ 268
5	34	9	24	24	24	27	15	37	23	684.8	6.8	62.0	87.3	240.6	368.8	5.5	650.7	409.5	\$ 1,736	\$ 305	\$ 983	\$ 1,119	\$ 1,040	\$ 1,241	\$ 673	\$ 2,292	\$ 222
6	46	26	38	36	45	39	38	48	36	732.4	16.8	1,273.3	721.3	1,291.0	1,083.5	896.5	2,164.7	1,359.0	\$ 2,343	\$ 1,030	\$ 2,551	\$ 2,135	\$ 2,909	\$ 2,503	\$ 2,724	\$ 4,210	\$ 2,229
7	48	37	43	46	47	50	50	51	47	1,223.1	644.3	1,079.0	784.7	1,350.7	1,387.3	2,898.2	1,907.3	2,157.2	\$ 3,015	\$ 1,863	\$ 2,584	\$ 2,387	\$ 3,012	\$ 3,162	\$ 5,276	\$ 3,907	\$ 3,241
8	46	44	43	52	48	46	47	54	53	1,002.8	905.5	1,120.9	1,483.7	1,530.4	2,207.7	2,829.6	2,885.7	3,009.0	\$ 2,763	\$ 2,504	\$ 2,666	\$ 3,205	\$ 3,243	\$ 3,299	\$ 5,013	\$ 4,597	\$ 4,301
9	49	49	50	46	46	53	48	56	54	815.6	1,374.6	1,274.2	817.6	1,226.4	1,726.4	2,705.8	2,544.3	3,150.0	\$ 2,524	\$ 3,007	\$ 2,909	\$ 2,478	\$ 2,820	\$ 3,700	\$ 4,900	\$ 4,780	\$ 4,564
10	24	38	32	38	42	41	29	44	43	362.7	517.3	539.1	392.3	606.2	1,688.6	1,419.9	1,370.4	1,785.5	\$ 1,053	\$ 1,708	\$ 1,505	\$ 1,352	\$ 1,543	\$ 3,202	\$ 2,374	\$ 3,147	\$ 2,817
11	7	25	8	13	12	18	14	11	18	17.9	112.0	140.6	113.8	214.1	259.7	203.3	90.6	270.1	\$ 264	\$ 1,120	\$ 278	\$ 395	\$ 488	\$ 737	\$ 634	\$ 1,081	\$ 620
12	7	12	6	5	5	10	12	22		3.1	2.4	4.4	6.5	4.4	3.7	2.1	474.9		\$ 170	\$ 404	\$ 116	\$ 230	\$ 170	\$ 249	\$ 392	\$ 973	
	41	34	38	40	42	43	38	48	43	5,045.2	3,587.7	5,504.8	4,431.9	6,474.8	8,745.8	10,973.5	12,118.3	12,502.5	\$ 16,157	\$ 12,527	\$ 14,942	\$ 14,125	\$ 15,974	\$ 18,548	\$ 23,001	\$ 26,221	
	Averages (May - October irrigation season)									Totals									Totals								



BANGOR DITCH WATER CONSUMPTION: 1997 - 2005

Month	Customers (Active)									Volume (x 1,000 cf)									Revenue								
	1997	1998	1999	2000	2001	2002	2003	2004	2005	1997	1998	1999	2000	2001	2002	2003	2004	2005	1997	1998	1999	2000	2001	2002	2003	2004	2005
	1	131	142	150	156	166	169	153	166	183	340.30	377.22	537.94	837.44	859.72	346.08	117.70	298.02	819.49	\$ 2,820	\$ 3,122	\$ 3,105	\$ 3,435	\$ 3,568	\$ 3,026	\$ 2,781	\$ 3,888
2	131	143	147	153	143	168	171	164	163	81.70	213.70	400.80	303.18	361.76	293.68	266.06	154.00	695.91	\$ 2,604	\$ 3,089	\$ 2,887	\$ 2,803	\$ 3,020	\$ 2,961	\$ 4,122	\$ 3,650	\$ 3,729
3	134	141	143	153	163	168	169	164	163	146.38	220.94	211.76	754.78	372.62	97.02	133.18	132.34	756.31	\$ 2,704	\$ 2,883	\$ 2,658	\$ 3,264	\$ 3,033	\$ 3,018	\$ 3,860	\$ 3,682	\$ 3,741
4	151	139	146	160	165	174	168	178	170	475.96	272.62	292.12	461.80	487.16	431.74	187.56	522.04	778.46	\$ 3,893	\$ 2,797	\$ 2,778	\$ 3,265	\$ 3,206	\$ 3,219	\$ 4,034	\$ 4,479	\$ 3,904
5	189	147	173	179	191	204	184	212	187	6,328.90	502.84	1,747.80	3,072.74	1,674.56	2,480.72	288.72	5,044.56	1,807.24	\$ 9,693	\$ 3,230	\$ 4,845	\$ 6,184	\$ 4,883	\$ 5,786	\$ 4,464	\$ 9,950	\$ 5,274
6	187	167	196	200	211	216	212	219	212	9,931.34	1,045.74	6,716.56	6,947.80	8,703.04	6,959.76	4,964.58	7,615.46	4,638.66	\$ 13,629	\$ 4,148	\$ 10,360	\$ 10,482	\$ 12,439	\$ 10,641	\$ 9,842	\$ 12,741	\$ 8,689
7	196	188	203	210	216	223	220	241	219	9,294.92	5,275.60	9,879.98	10,891.28	11,582.04	11,067.80	8,588.32	12,886.23	7,522.74	\$ 13,082	\$ 8,769	\$ 13,703	\$ 14,675	\$ 15,467	\$ 14,963	\$ 13,871	\$ 18,402	\$ 11,780
8	196	200	207	213	219	227	220	229	226	10,350.72	9,612.98	10,020.84	9,182.30	11,999.64	10,774.98	11,602.54	11,088.18	9,961.04	\$ 14,168	\$ 13,326	\$ 13,876	\$ 12,941	\$ 15,918	\$ 14,707	\$ 16,675	\$ 16,533	\$ 14,425
9	189	197	204	221	220	226	221	226	223	9,246.50	9,359.26	10,184.08	11,723.20	11,423.02	10,348.92	9,755.90	10,421.12	11,016.50	\$ 12,945	\$ 13,000	\$ 13,983	\$ 15,704	\$ 15,307	\$ 14,357	\$ 14,926	\$ 15,787	\$ 15,496
10	171	188	197	202	215	219	216	216	221	6,729.00	7,590.02	8,797.80	8,352.52	7,999.32	8,768.44	9,115.18	7,235.44	7,721.31	\$ 9,967	\$ 11,036	\$ 12,428	\$ 11,923	\$ 11,707	\$ 13,508	\$ 14,196	\$ 12,207	\$ 11,990
11	123	170	181	182	195	199	196	182	185	1,925.90	4,401.70	4,334.72	2,553.02	3,808.04	9,929.70	4,545.10	1,943.22	4,258.76	\$ 4,908	\$ 7,320	\$ 7,401	\$ 5,548	\$ 6,995	\$ 13,400	\$ 8,930	\$ 5,912	\$ 7,743
12	147	152	159	171	173	178	172	176		449.30	355.28	587.18	690.56	537.32	718.90	548.50	1,022.73		\$ 3,207	\$ 2,939	\$ 3,283	\$ 3,438	\$ 3,261	\$ 3,510	\$ 4,298	\$ 2,930	
Averages									Totals									Totals									
									55,300.92 39,227.90 53,711.58 55,770.62 59,808.24 62,217.74 50,113.34 58,363.33 49,976.41									\$ 93,620 \$ 75,659 \$ 91,306 \$ 93,662 \$ 103,095 \$ 102,000 \$ 110,160									



PALERMO DITCH WATER CONSUMPTION: 1997 - 2005

Month	Customers (Active)									Volume (x 1,000 cf)									Revenue								
	1997	1998	1999	2000	2001	2002	2003	2004	2005	1997	1998	1999	2000	2001	2002	2003	2004	2005	1997	1998	1999	2000	2001	2002	2003	2004	2005
	1	66	64	70	70	70	78	56	75	71	178.86	180.56	214.12	236.90	189.36	220.22	84.60	219.66	342.90	\$ 1,579	\$ 1,476	\$ 1,487	\$ 1,465	\$ 1,380	\$ 1,491	\$ 1,067	\$ 1,945
2	63	60	67	67	70	76	73	72	68	136.76	186.24	126.06	97.27	187.48	230.52	148.02	208.66	519.50	\$ 1,510	\$ 1,393	\$ 1,363	\$ 1,384	\$ 1,370	\$ 1,435	\$ 1,746	\$ 1,881	\$ 1,828
3	67	63	61	67	68	76	74	72	68	254.78	165.84	559.58	75.67	180.76	197.06	206.80	169.64	546.35	\$ 1,607	\$ 1,405	\$ 1,518	\$ 1,330	\$ 1,296	\$ 1,412	\$ 1,825	\$ 1,839	\$ 1,824
4	116	63	66	81	73	86	76	72	68	3,483.10	197.96	284.32	965.60	354.76	417.56	275.42	444.95	549.72	\$ 5,777	\$ 1,438	\$ 1,309	\$ 2,982	\$ 1,600	\$ 1,766	\$ 1,976	\$ 2,126	\$ 1,838
5	163	79	146	103	157	175	86	185	88	7,347.80	627.76	4,639.00	1,527.22	5,476.48	5,682.40	323.98	6,617.18	941.42	\$ 10,369	\$ 2,187	\$ 7,098	\$ 3,498	\$ 7,980	\$ 8,465	\$ 2,336	\$ 10,754	\$ 2,606
6	192	110	189	175	191	205	196	199	175	9,008.54	2,202.32	8,501.10	7,030.98	8,965.98	8,406.36	8,581.26	8,260.96	6,450.06	\$ 12,456	\$ 4,200	\$ 11,644	\$ 10,768	\$ 12,111	\$ 11,617	\$ 12,902	\$ 12,650	\$ 9,832
7	197	200	193	189	199	204	214	198	202	10,829.98	9,739.26	9,988.64	6,678.91	9,891.16	9,241.96	8,396.05	8,020.61	8,669.57	\$ 14,403	\$ 13,181	\$ 13,279	\$ 10,991	\$ 13,104	\$ 11,704	\$ 13,069	\$ 12,389	\$ 12,637
8	194	206	197	196	206	215	219	206	209	9,851.88	9,902.92	8,536.10	7,681.16	9,890.66	9,912.98	11,834.39	7,764.92	10,344.43	\$ 13,314	\$ 13,376	\$ 11,811	\$ 12,577	\$ 13,227	\$ 13,375	\$ 15,693	\$ 13,173	\$ 14,545
9	181	193	190	182	200	212	217	196	201	8,195.80	10,437.54	9,035.80	6,562.26	9,364.84	9,801.94	9,473.72	9,199.26	9,462.04	\$ 11,452	\$ 13,793	\$ 12,264	\$ 10,717	\$ 12,663	\$ 13,247	\$ 14,330	\$ 13,699	\$ 13,495
10	123	147	178	154	169	187	173	172	165	2,949.44	5,460.60	6,136.88	2,805.99	4,944.42	6,665.24	5,406.14	4,468.28	5,425.76	\$ 5,245	\$ 8,176	\$ 9,106	\$ 5,972	\$ 7,664	\$ 9,642	\$ 9,324	\$ 8,331	\$ 8,640
11	55	85	91	79	98	142	102	79	91	831.88	795.18	623.20	382.40	1,019.00	963.32	862.74	227.80	883.35	\$ 2,475	\$ 2,266	\$ 2,142	\$ 1,802	\$ 2,517	\$ 2,799	\$ 3,130	\$ 2,024	\$ 2,587
12	58	71	71	74	79	76	84	75		184.70	205.20	323.26	121.03	301.30	197.90	272.54	539.79		\$ 1,593	\$ 1,489	\$ 1,576	\$ 1,408	\$ 1,597	\$ 1,236	\$ 2,203	\$ 1,171	
	123	112	127	120	132	144	131	133		53,253.52	40,101.38	48,968.06	34,165.39	50,766.20	51,937.46	45,865.66	46,141.72	44,135.10	\$ 81,781	\$ 64,382	\$ 74,597	\$ 64,893	\$ 76,508	\$ 78,188	\$ 79,600	\$ 81,984	
	Averages									Totals									Totals								

